

Rice Ridge Fire

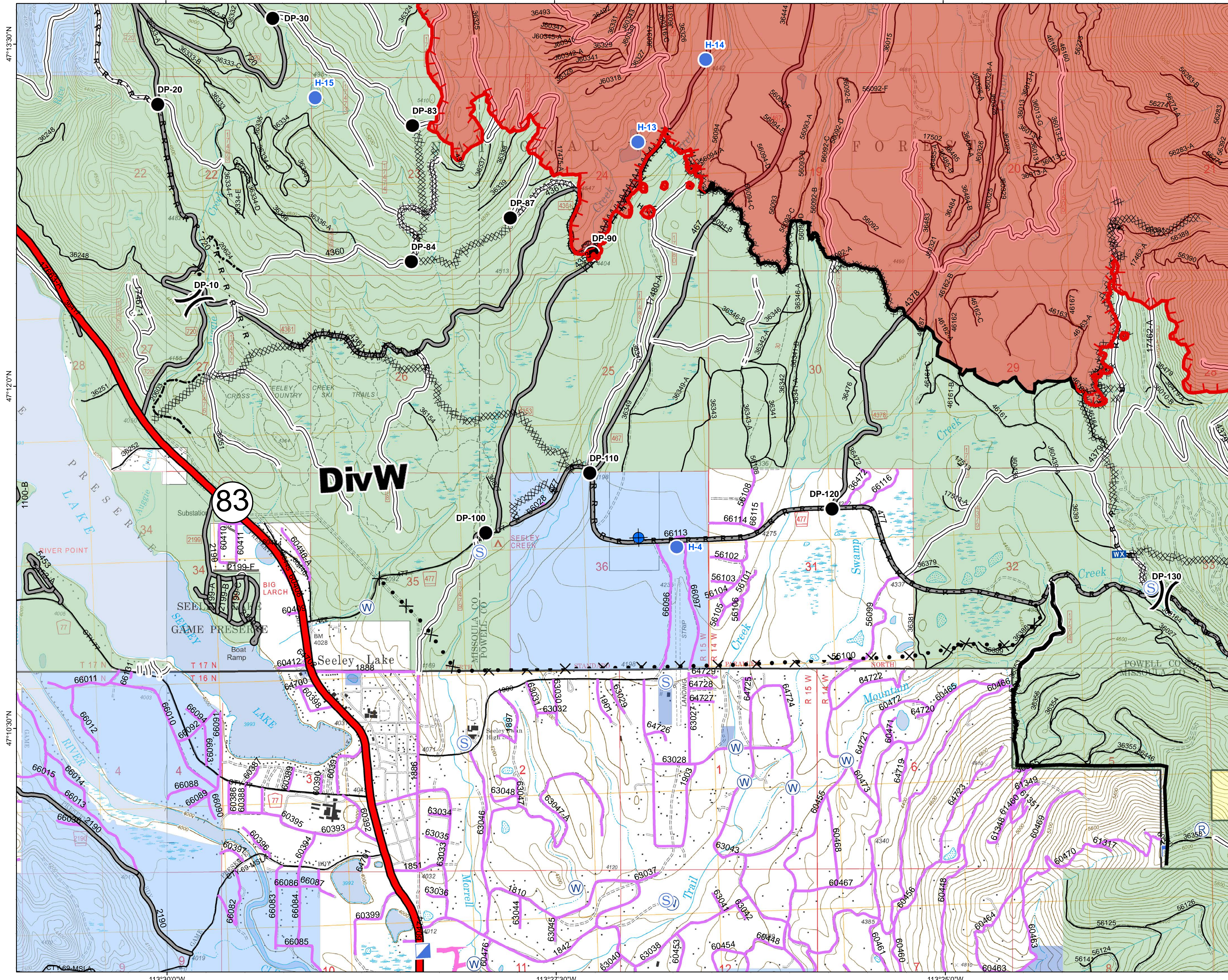
MT-LNF-001464

DIV W

Operations Map

August 27, 2017

22,405 Acres (IR Flight 8/26/17 2221)



- () Division Break
- (R) Repeater
- (D) Dip Site
- (●) Drop Point
- (H) Helispot
- (I) Incident Command Post
- (L) Lookout
- (WX) Mobile Weather Unit
- (S) Staging Area
- (W) Water Source
- Completed Line
- Uncontrolled Fire Edge
- H - H - Completed Hand Line
- R - R - Road as Completed Line
- MMM Line Break Completed
- X - X - Proposed Dozer Line
- ~ ~ ~ Fire Break Planned or Incomplete
- · · Highlighted Manmade Feature
- Other
- Forest Service Undetermined
- Interstate and Highways
- Forest Service System Roads
- 1 - BASIC(CLOSED); 2 - HIGH CLEARANCE
- 3 - PASSENGER CARS; 4 - MODERATE COMFORT; 5 - HIGH COMFORT
- Private Roads
- County
- Plum Creek Roads
- Short Term Spec Roads
- Fire Perimeter
- County Government
- Montana State Trust Lands
- US Bureau of Land Management
- US Forest Service

