

# Rice Ridge Fire

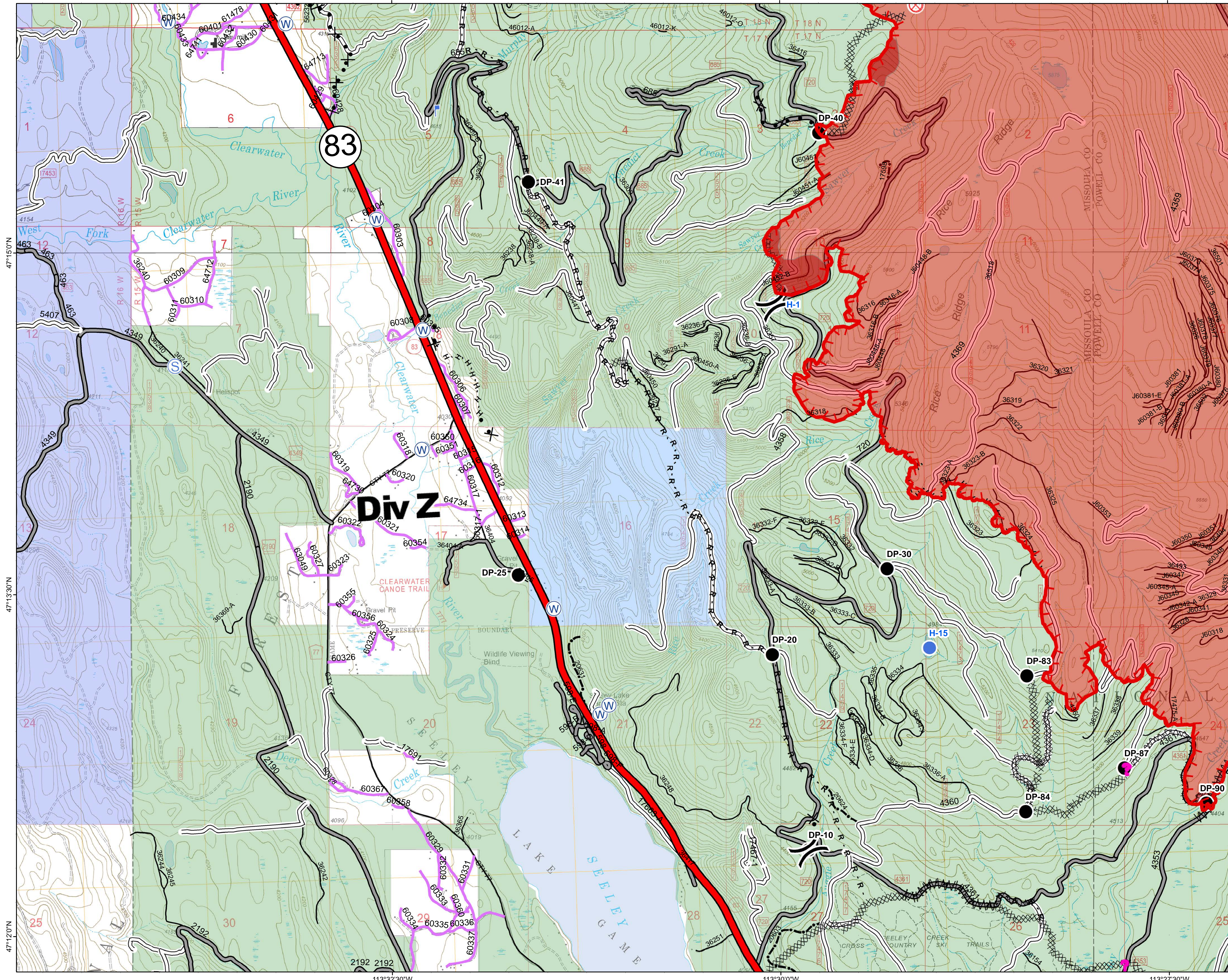
MT-LNF-001464

DIV Z

Operations Map

August 27, 2017

22,405 Acres (IR Flight 8/26/17 2221)



- ( ) Division Break
- Drop Point
- ⊙ Fire Origin
- Helispot
- ⌂ Lookout
- ☒ Mobile Weather Unit
- ⊙ Staging Area
- ⊙ Water Source
- ⊙ Other
- Uncontrolled Fire Edge
- H · H · Completed Hand Line
- R · R · Road as Completed Line
- ▬▬▬ Line Break Completed
- ▬▬▬▬ Completed Dozer Line
- × · × · Proposed Dozer Line
- ▬▬▬▬ Fire Break Planned or Incomplete
- Forest Service Undetermined
- ▬ Interstate and Highways
- ▬ Forest Service System Roads
- 1 - BASIC(CLOSED); 2 - HIGH CLEARANCE
- 3 - PASSENGER CARS; 4 - MODERATE COMFORT; 5 - HIGH COMFORT
- ▬ Private Roads
- ▬ County
- ▬▬▬ Plum Creek Roads
- ▬▬▬ Short Term Spec Roads
- ▬ Fire Perimeter
- ▬ IR\_IntenseHeat
- ▬ Montana Fish, Wildlife, and Parks
- ▬ Montana State Trust Lands
- ▬ US Forest Service

