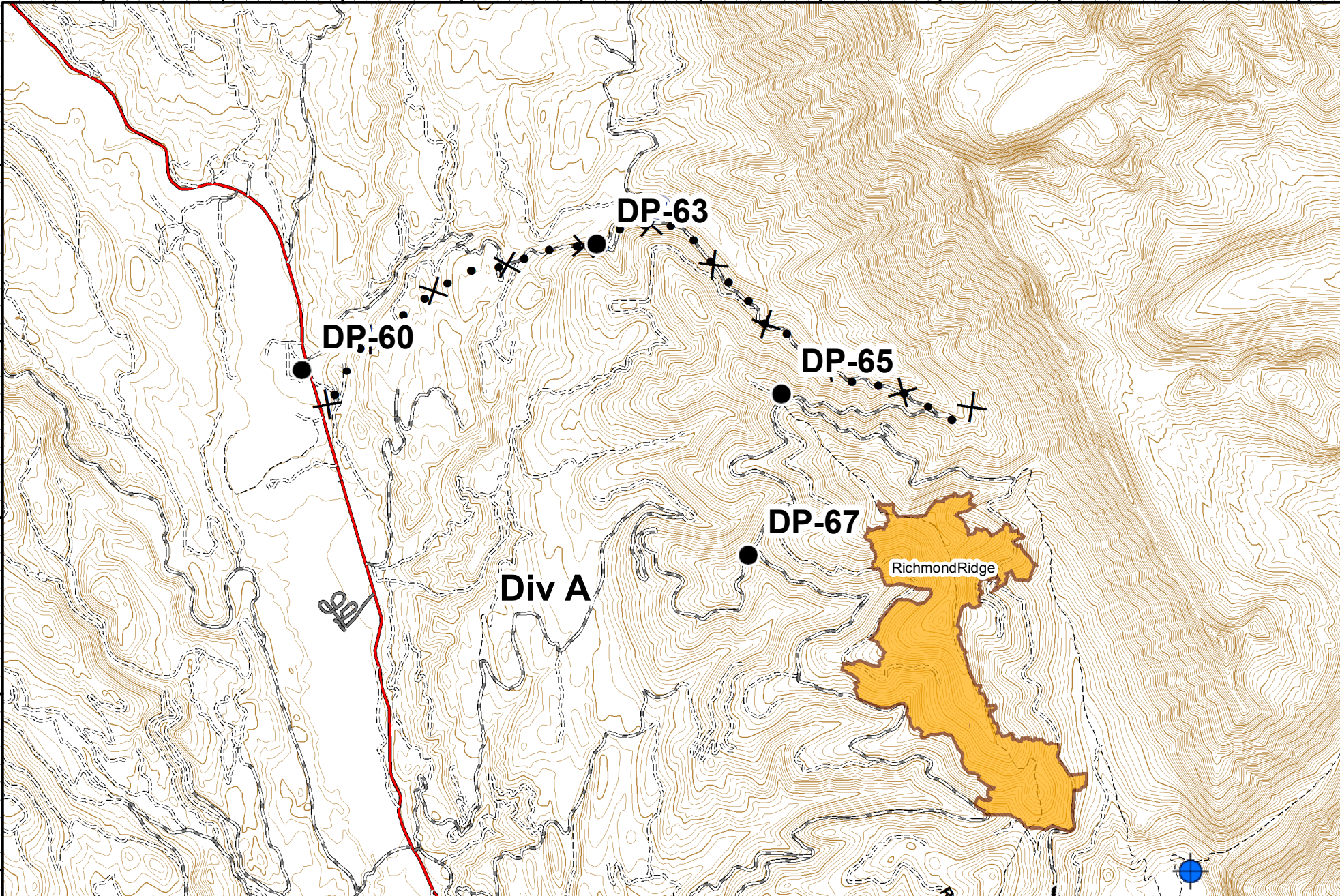


113°37'0"W 113°36'0"W 113°35'0"W 113°34'0"W 113°33'0"W 113°32'0"W 113°31'0"W 113°30'0"W 113°29'0"W 113°28'0"W 113°27'0"W

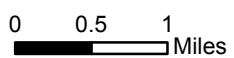
47°22'0"N
47°21'0"N
47°20'0"N
47°19'0"N
47°18'0"N

47°22'0"N
47°21'0"N
47°20'0"N
47°19'0"N
47°18'0"N



Rice Ridge Fire Incident Action Plan

MT-LNF-001464
08/28/2017
MAP 1
Approx Acres 22,405



Dip Site	Drop Point	R - Road as Completed Line	Proposed Dozer Line	FireHistory
Water Source				