

113°45'0"W 113°42'0"W 113°39'0"W 113°36'0"W 113°33'0"W 113°30'0"W 113°27'0"W 113°24'0"W 113°21'0"W 113°18'0"W 113°15'0"W 113°12'0"W 113°9'0"W 113°6'0"W

# Air Operations Map

## RICE RIDGE FIRE

MT-LNF-001464  
**August 28, 2017**  
**27,863 Acres (IR Flight 8/27/17 @2255)**



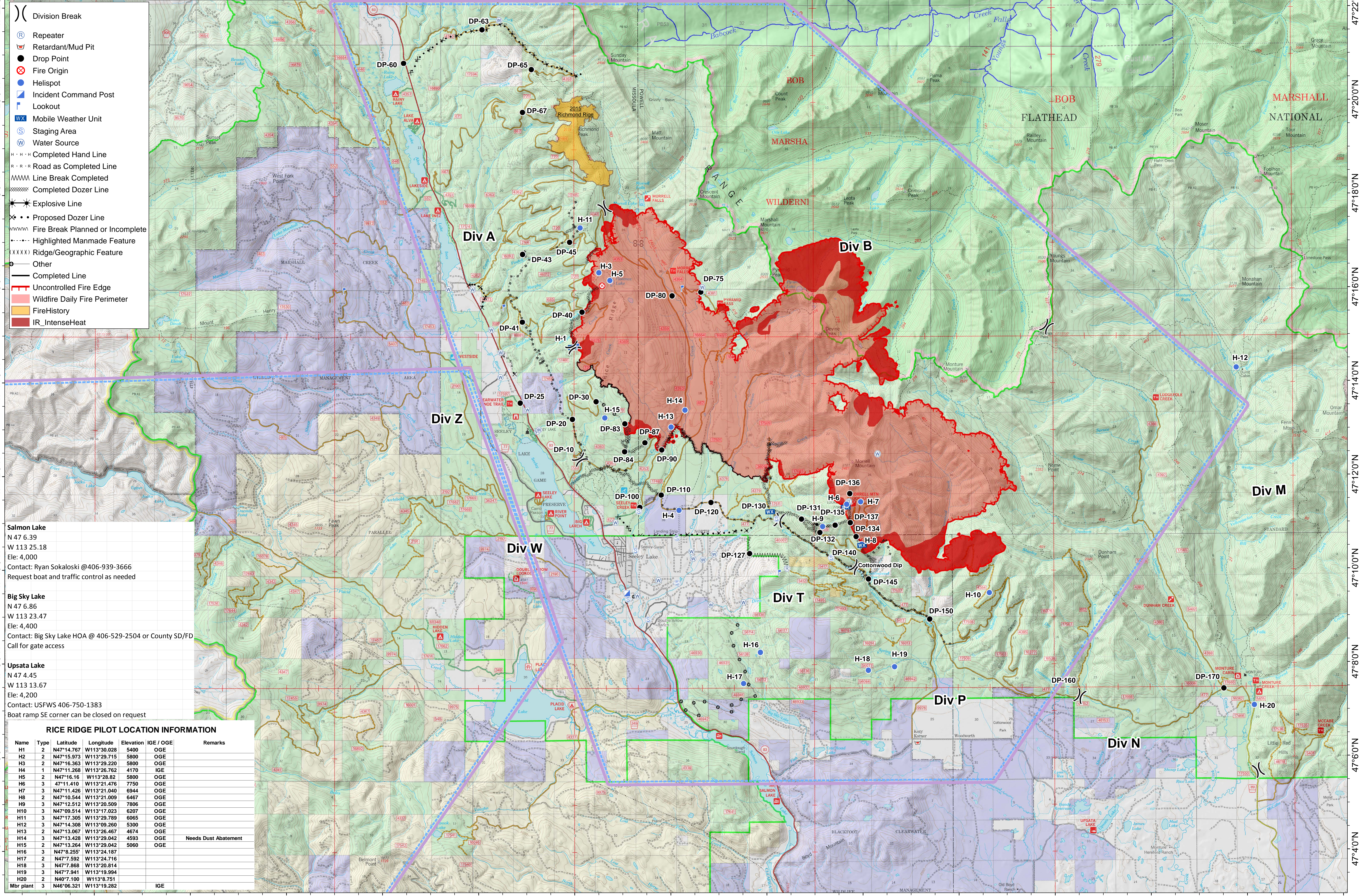
- ( ) Division Break
- (R) Repeater
- (M) Retardant/Mud Pit
- (●) Drop Point
- (●) Fire Origin
- (●) Helispot
- (I) Incident Command Post
- (L) Lookout
- (M) Mobile Weather Unit
- (S) Staging Area
- (W) Water Source
- (---) Completed Hand Line
- (---) Road as Completed Line
- (---) Line Break Completed
- (---) Completed Dozer Line
- (---) Explosive Line
- (---) Proposed Dozer Line
- (---) Fire Break Planned or Incomplete
- (---) Highlighted Manmade Feature
- (---) Ridge/Geographic Feature
- (---) Other
- (---) Completed Line
- (---) Uncontrolled Fire Edge
- (---) Wildfire Daily Fire Perimeter
- (---) FireHistory
- (---) IR\_IntenseHeat

**Salmon Lake**  
 N 47 6.39  
 W 113 25.18  
 Ele: 4,000  
 Contact: Ryan Sokaloski @406-939-3666  
 Request boat and traffic control as needed

**Big Sky Lake**  
 N 47 6.86  
 W 113 23.47  
 Ele: 4,400  
 Contact: Big Sky Lake HOA @ 406-529-2504 or County SD/FD  
 Call for gate access

**Upsata Lake**  
 N 47 4.45  
 W 113 13.67  
 Ele: 4,200  
 Contact: USFWS 406-750-1383  
 Boat ramp SE corner can be closed on request

RICE RIDGE PILOT LOCATION INFORMATION						
Name	Type	Latitude	Longitude	Elevation	IGE / OGE	Remarks
H1	2	N47°14.767	W113°30.028	5400	OGE	
H2	2	N47°15.973	W113°29.715	5800	OGE	
H3	2	N47°16.363	W113°29.220	5800	OGE	
H4	1	N47°11.268	W113°26.762	4170	IGE	
H5	2	N47°16.16	W113°28.82	5800	OGE	
H6	3	47°11.410	W113°21.476	7750	OGE	
H7	3	N47°11.426	W113°21.040	6944	OGE	
H8	2	N47°10.544	W113°21.009	6467	OGE	
H9	3	N47°12.512	W113°20.509	7806	OGE	
H10	3	N47°09.514	W113°17.023	6207	OGE	
H11	3	N47°17.305	W113°29.789	6065	OGE	
H12	3	N47°14.308	W113°09.260	5300	OGE	
H13	2	N47°13.067	W113°26.467	4674	OGE	
H14	3	N47°13.428	W113°29.042	4593	OGE	Needs Dust Abatement
H15	2	N47°13.264	W113°29.042	5060	OGE	
H16	3	N47°8.255	W113°24.187			
H17	2	N47°7.592	W113°24.716			
H18	3	N47°7.868	W113°20.814			
H19	3	N47°7.941	W113°19.994			
H20	2	N40°7.100	W113°8.751			
Mbr plant	3	N46°06.321	W113°19.282		IGE	



113°45'0"W 113°42'0"W 113°39'0"W 113°36'0"W 113°33'0"W 113°30'0"W 113°27'0"W 113°24'0"W 113°21'0"W 113°18'0"W 113°15'0"W 113°12'0"W 113°9'0"W 113°6'0"W