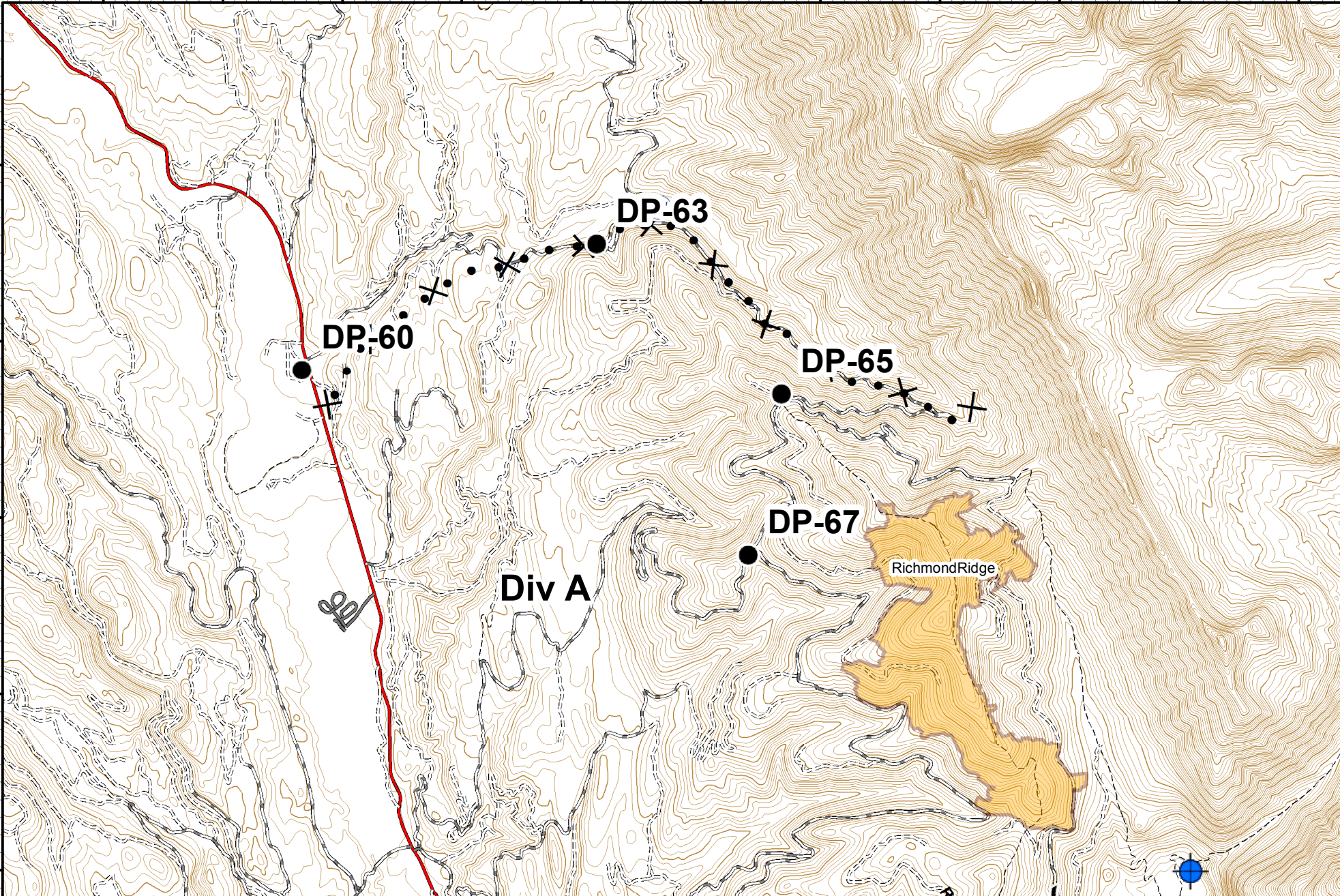


113°37'0"W 113°36'0"W 113°35'0"W 113°34'0"W 113°33'0"W 113°32'0"W 113°31'0"W 113°30'0"W 113°29'0"W 113°28'0"W 113°27'0"W

47°22'0"N  
47°21'0"N  
47°20'0"N  
47°19'0"N  
47°18'0"N

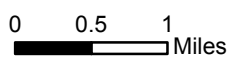
47°22'0"N  
47°21'0"N  
47°20'0"N  
47°19'0"N  
47°18'0"N



**Rice Ridge Fire Incident Action Plan**



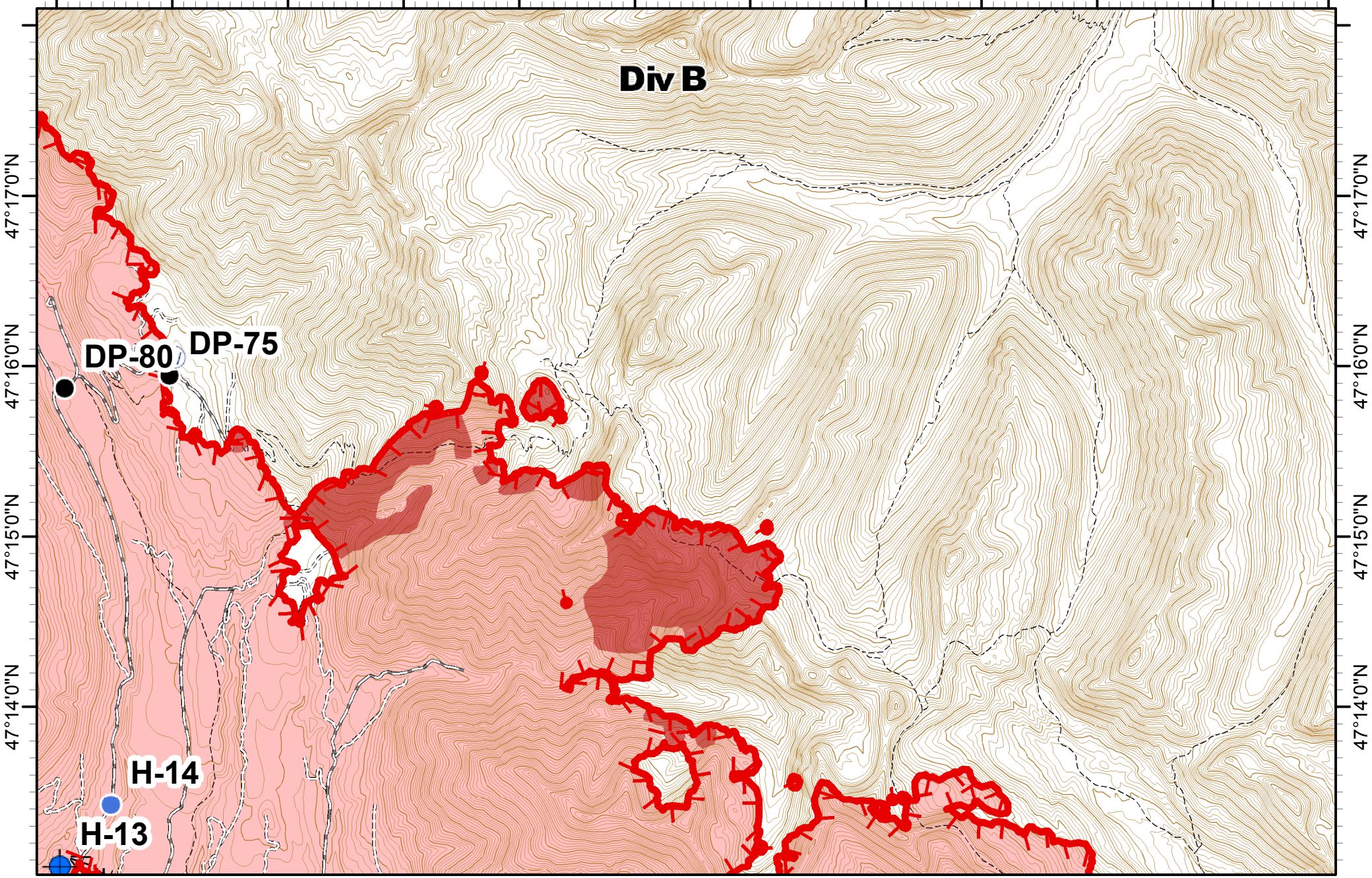
MT-LNF-001464  
08/28/2017  
**MAP 1**  
Approx Acres 22,405



Dip Site	Drop Point	R - Road as Completed Line	Proposed Dozer Line	FireHistory
Water Source				



113°27'0"W 113°26'0"W 113°25'0"W 113°24'0"W 113°23'0"W 113°22'0"W 113°21'0"W 113°20'0"W 113°19'0"W 113°18'0"W 113°17'0"W 113°16'0"W

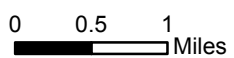


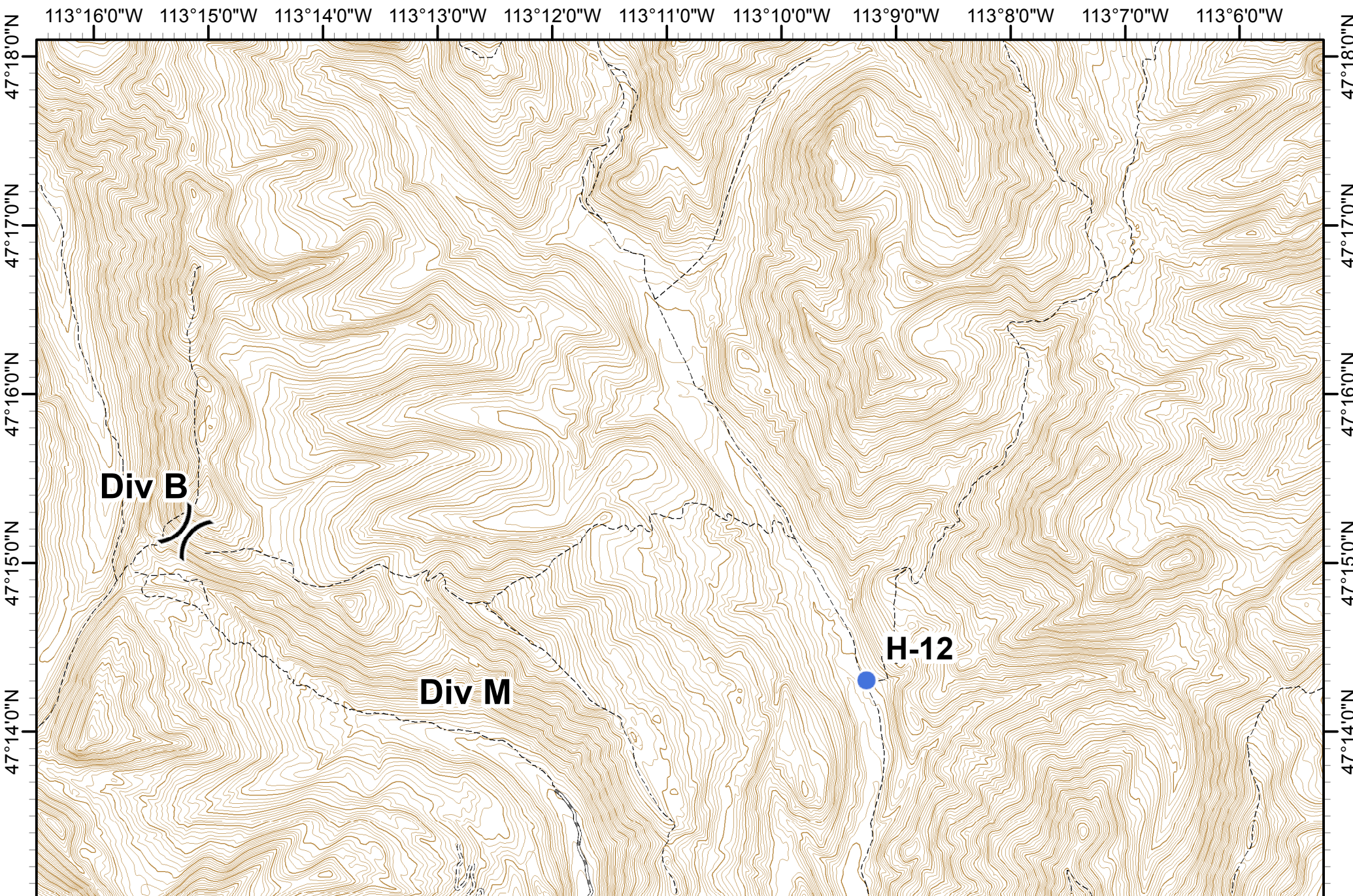
**Rice Ridge Fire  
Incident Action Plan**

MT-LNF-001464  
08/28/2017  
Approx Acres 22,405  
MAP 3



Dip Site	Drop Point	Lookout	H - Completed Hand Line	Line Break Completed	Wildfire Daily Fire Perimeter
	Helispot	Water Source			
		IR_IntenseHeat			



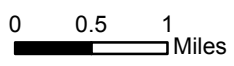


**Rice Ridge Fire  
Incident Action Plan**



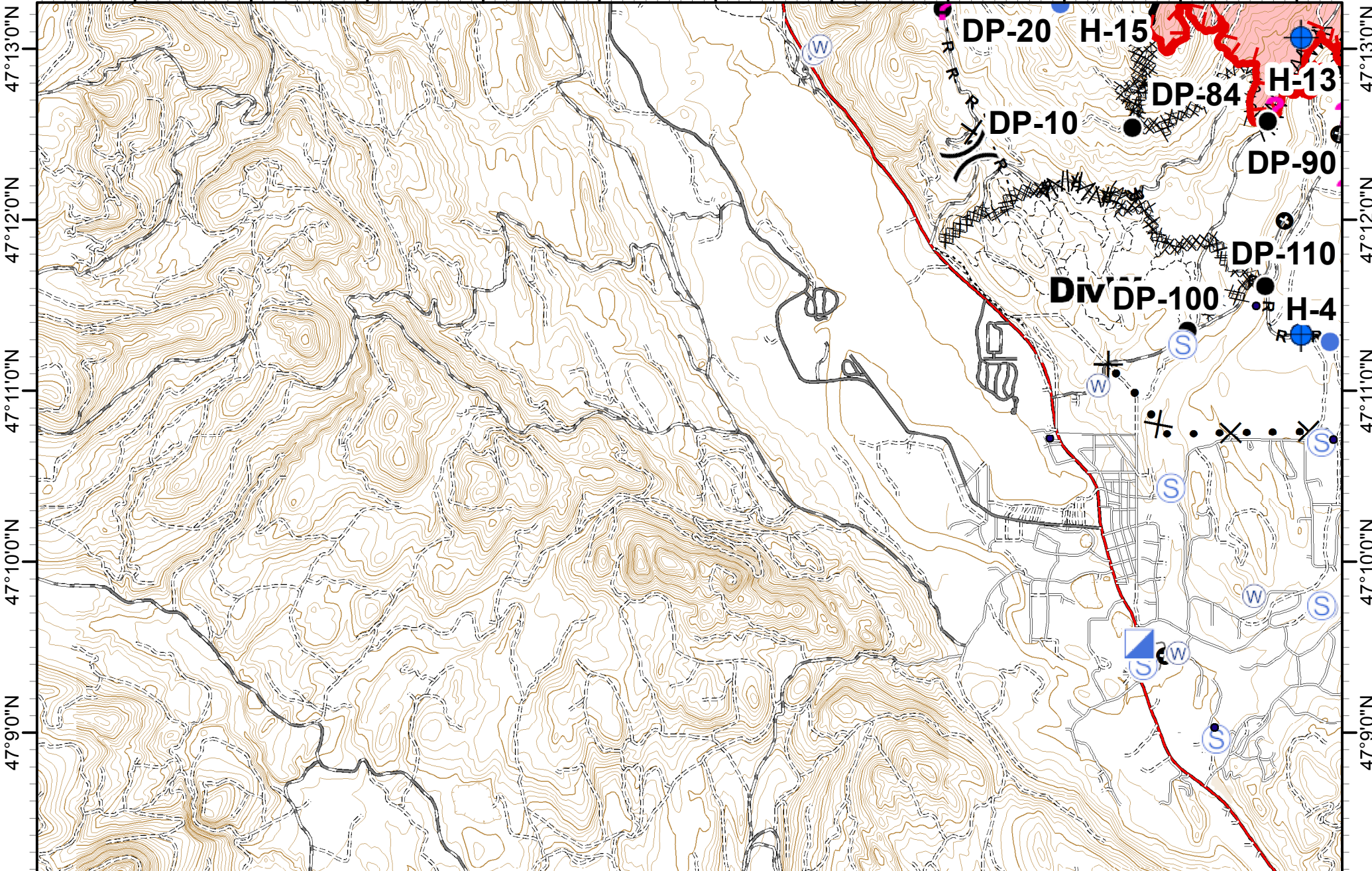
MT-LNF-001464  
08/28/2017  
Approx Acres 22,405

**MAP 4**



	Division Break		Helispot
--	----------------	--	----------

113°37'0"W 113°36'0"W 113°35'0"W 113°34'0"W 113°33'0"W 113°32'0"W 113°31'0"W 113°30'0"W 113°29'0"W 113°28'0"W 113°27'0"W



**Rice Ridge Fire**  
**Incident Action Plan**

MT-LNF-001464  
 08/28/2017  
 Approx Acres 22,405

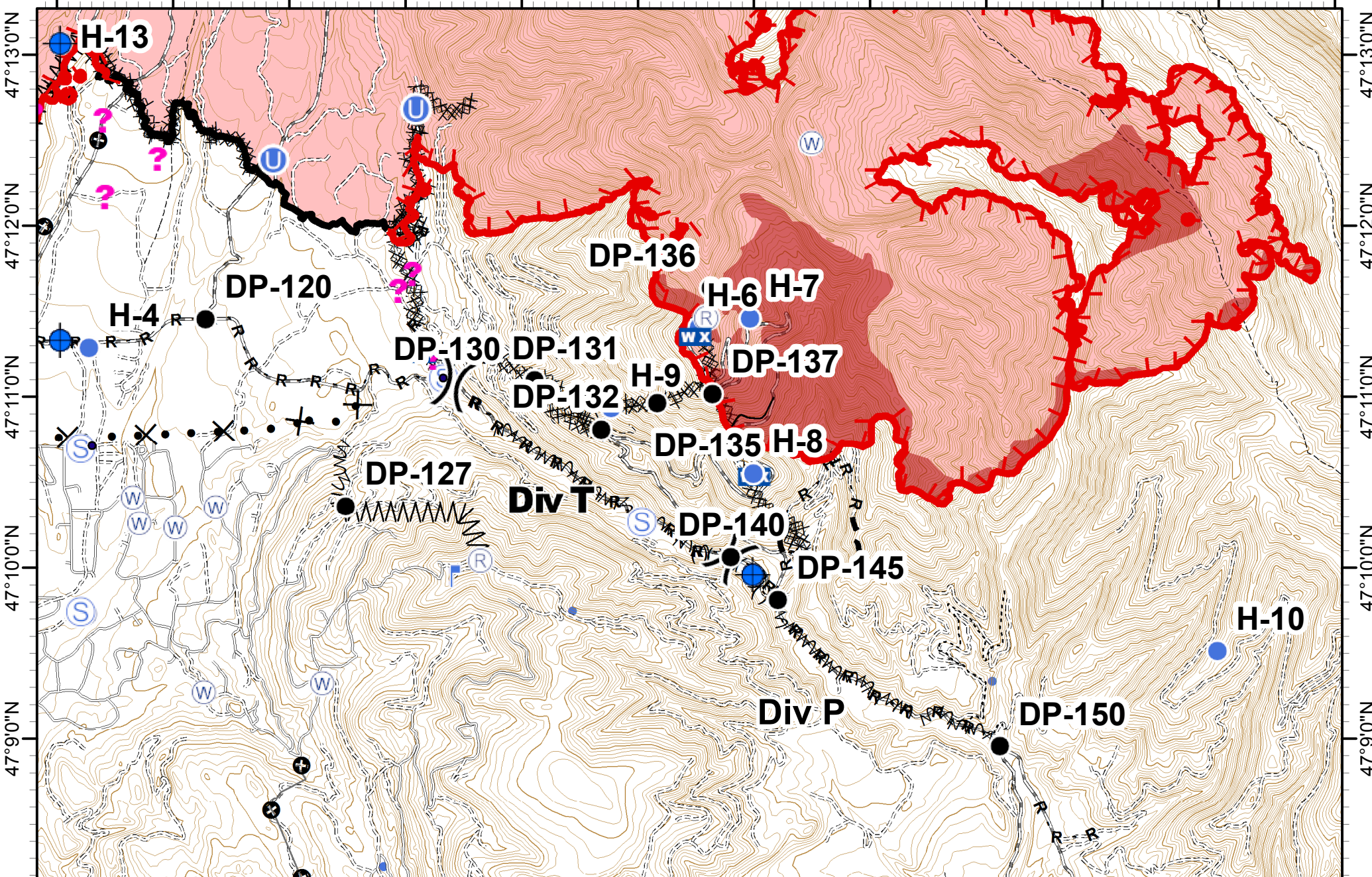
**MAP 5**

0 0.5 1 Miles



	Division Break		Drop Point		Staging Area		Completed Dozer Line		R - Road as Completed Line		Proposed Dozer Line
	Helispot		Water Source		H - Completed Hand Line		Line Break Completed		Fire Break Planned or Incomplete		Other
	Dip Site		Incident Command Post		Other		Wildfire Daily Fire Perimeter				

113°27'0"W 113°26'0"W 113°25'0"W 113°24'0"W 113°23'0"W 113°22'0"W 113°21'0"W 113°20'0"W 113°19'0"W 113°18'0"W 113°17'0"W 113°16'0"W



**Rice Ridge Fire Incident Action Plan**

MT-LNF-001464  
08/28/2017  
Approx Acres 22,405

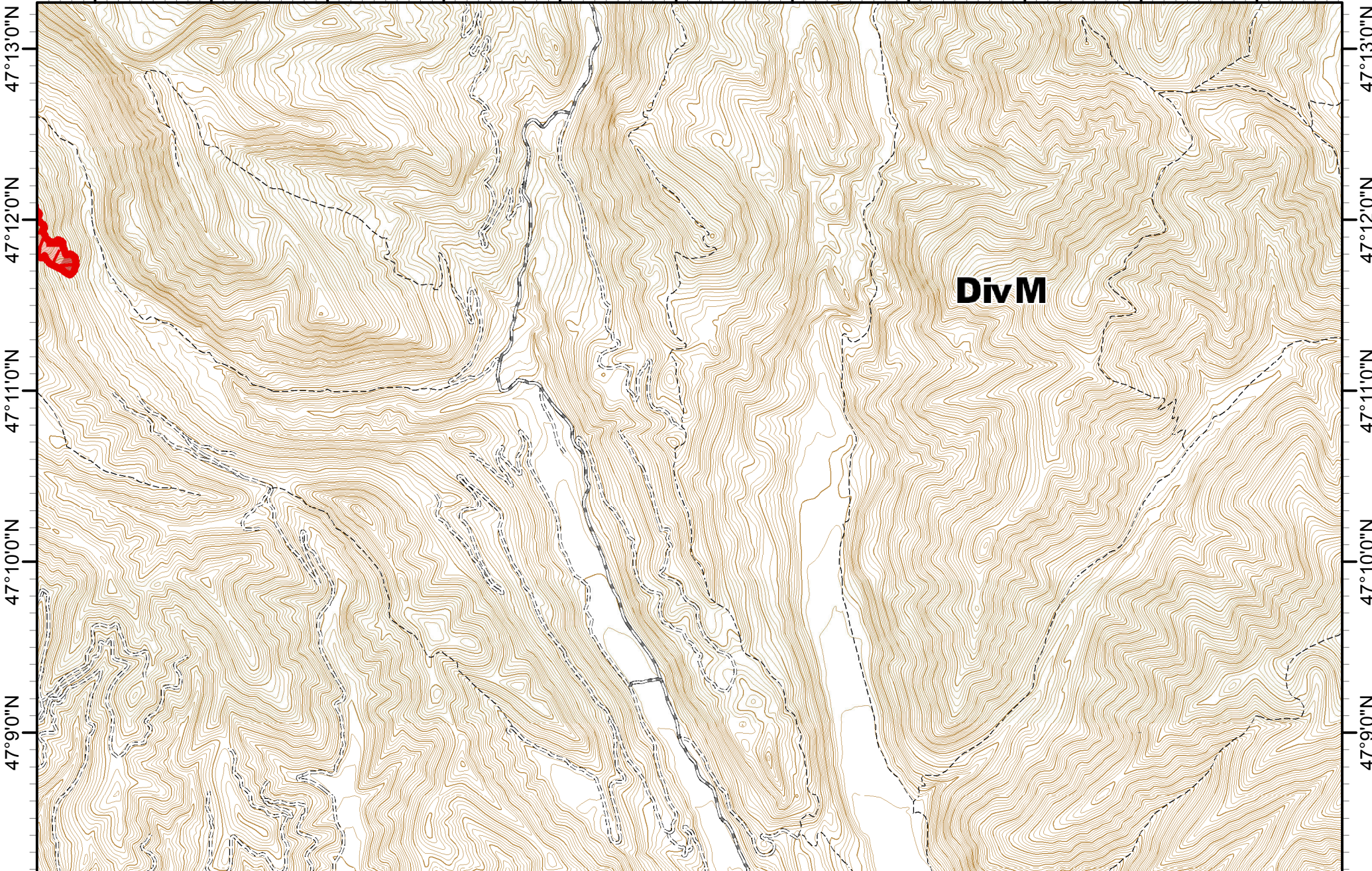
**MAP 6**

Northern Rockies Incident Management Team

0 0.5 1 Miles

Division Break	Drop Point	Mobile Weather Unit	Completed Dozer Line	Explosive Line	Highlighted Manmade Feature
Repeater	Unimproved Landing Area	Staging Area	Completed Hand Line	Proposed Dozer Line	Ridge/Geographic Feature
Dip Site	Helispot	Water Source	Road as Completed Line	Fire Break Planned or Incomplete	Other
Lookout	IR_IntenseHeat	Other	Line Break Completed	Planned Fire Line	Wildfire Daily Fire Perimeter

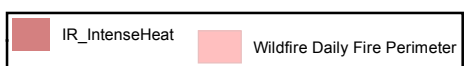
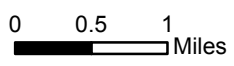
113°16'0"W 113°15'0"W 113°14'0"W 113°13'0"W 113°12'0"W 113°11'0"W 113°10'0"W 113°9'0"W 113°8'0"W 113°7'0"W 113°6'0"W



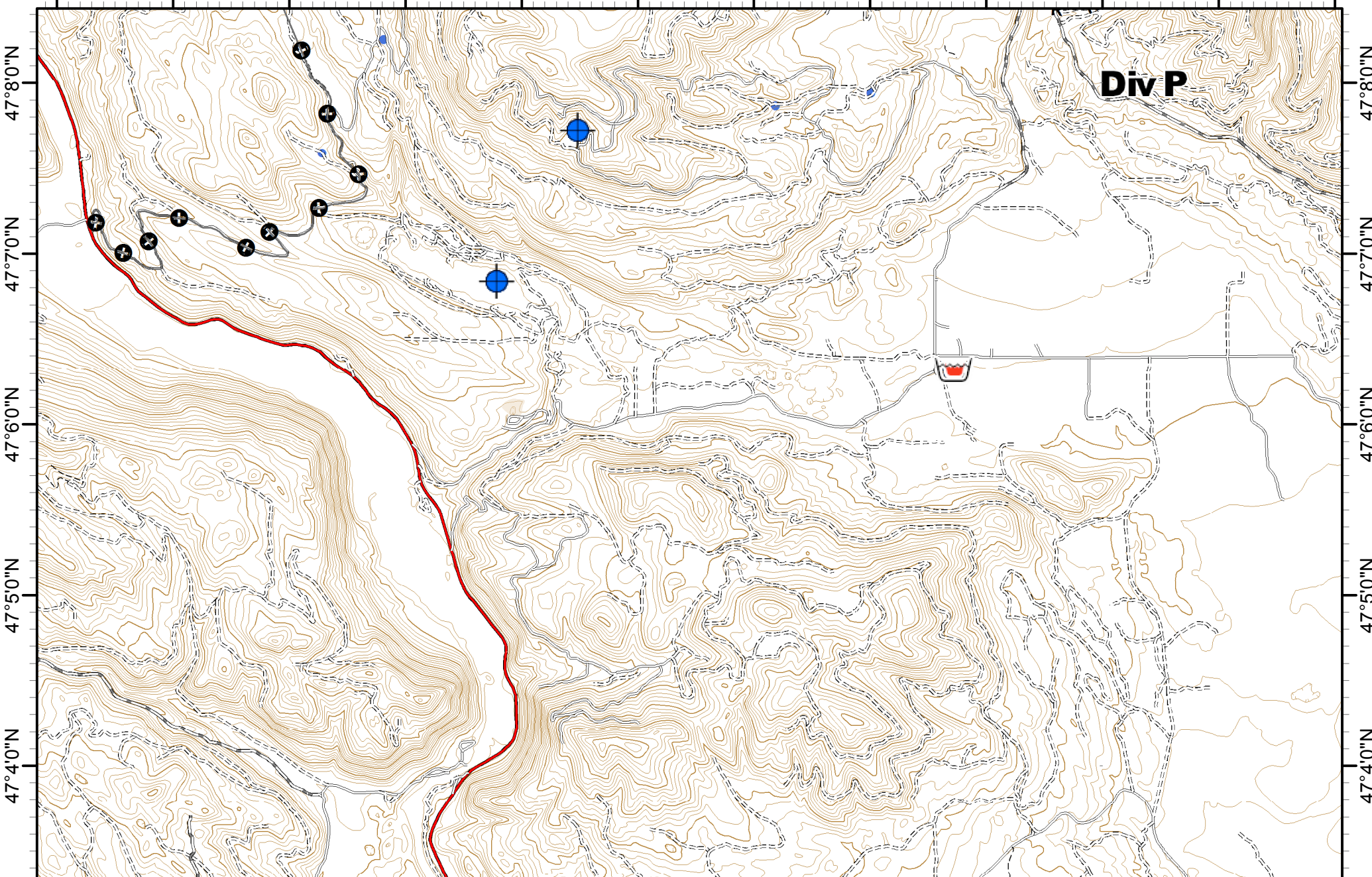
**Rice Ridge Fire**  
**Incident Action Plan**



MT-LNF-001464  
 08/28/2017  
**MAP 7**  
 Approx Acres 22,405



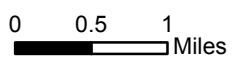
113°27'0"W 113°26'0"W 113°25'0"W 113°24'0"W 113°23'0"W 113°22'0"W 113°21'0"W 113°20'0"W 113°19'0"W 113°18'0"W 113°17'0"W 113°16'0"W



**Rice Ridge Fire  
Incident Action Plan**



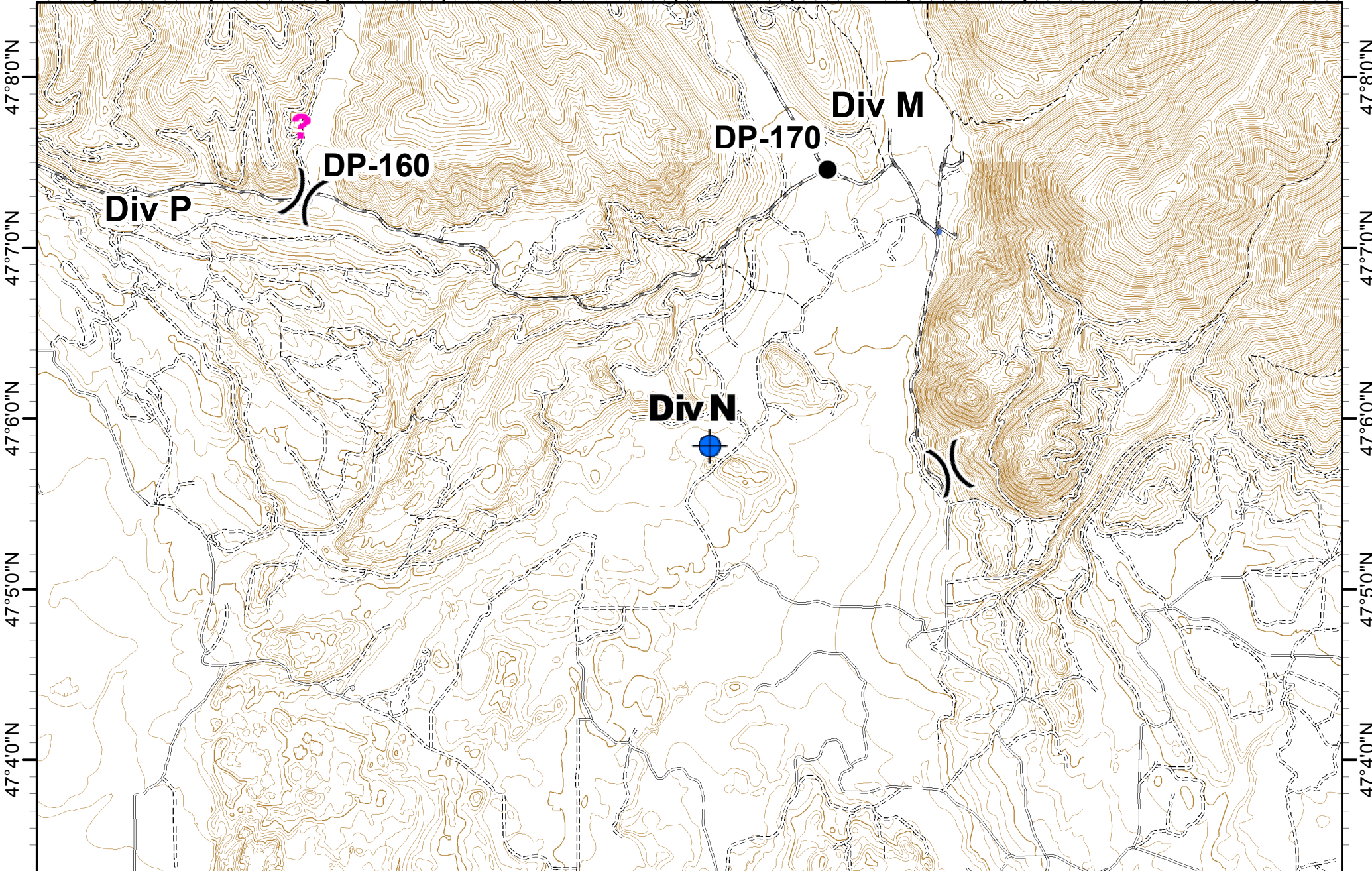
MT-LNF-001464 **MAP 8**  
08/28/2017  
Approx Acres 22,405



Retardant/Mud Pit	Dip Site	Helispot	R - Road as Completed Line	Other
-------------------	----------	----------	----------------------------	-------



113°16'0"W 113°15'0"W 113°14'0"W 113°13'0"W 113°12'0"W 113°11'0"W 113°10'0"W 113°9'0"W 113°8'0"W 113°7'0"W 113°6'0"W

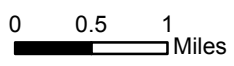







**Rice Ridge Fire Incident Action Plan**



MT-LNF-001464  
08/28/2017  
Approx Acres 22,405

**MAP 9**



	Division Break		Dip Site		Helispot
			Drop Point		Other