

# Rice Ridge Fire

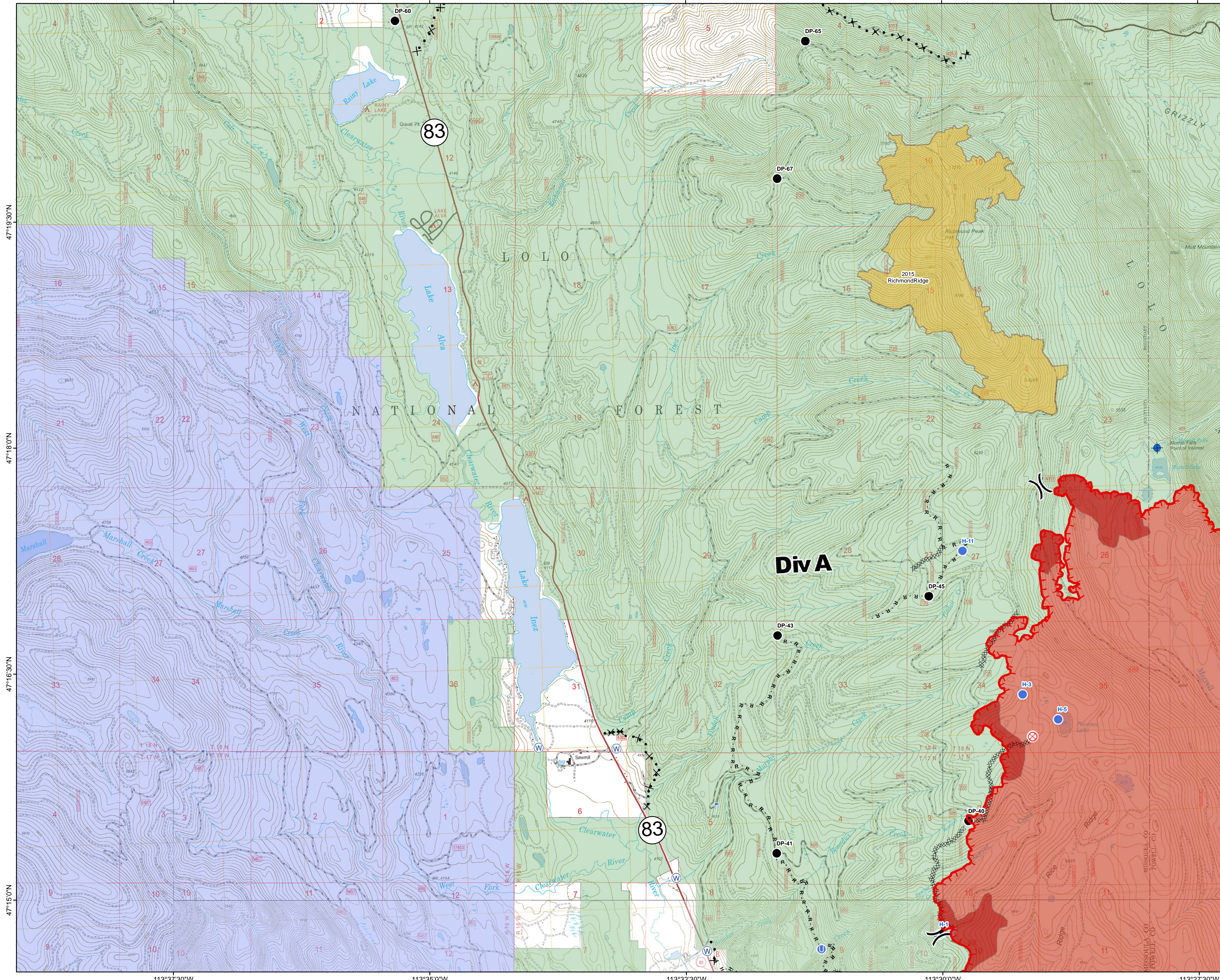
MT-LNF-001464

DIV A

Operations Map

August 28, 2017

27,863 Acres (IR Flight 8/27/17 2255)



- ( ) Division Break
- Dip Site
- Drop Point
- ⊗ Fire Origin
- ⊕ Unimproved Landing Area
- Helispot
- ⌚ Lookout
- ☁ Mobile Weather Unit
- ⊕ Water Source
- Completed Line
- Uncontrolled Fire Edge
- - - Completed Hand Line
- R - R - Road as Completed Line
- X - X - Completed Dozer Line
- X - X - Proposed Dozer Line
- Other Road
- Fire Perimeter
- IR\_IntenseHeat
- Fire History
- Montana Fish, Wildlife, and Parks
- US Forest Service

