

Rice Ridge Fire

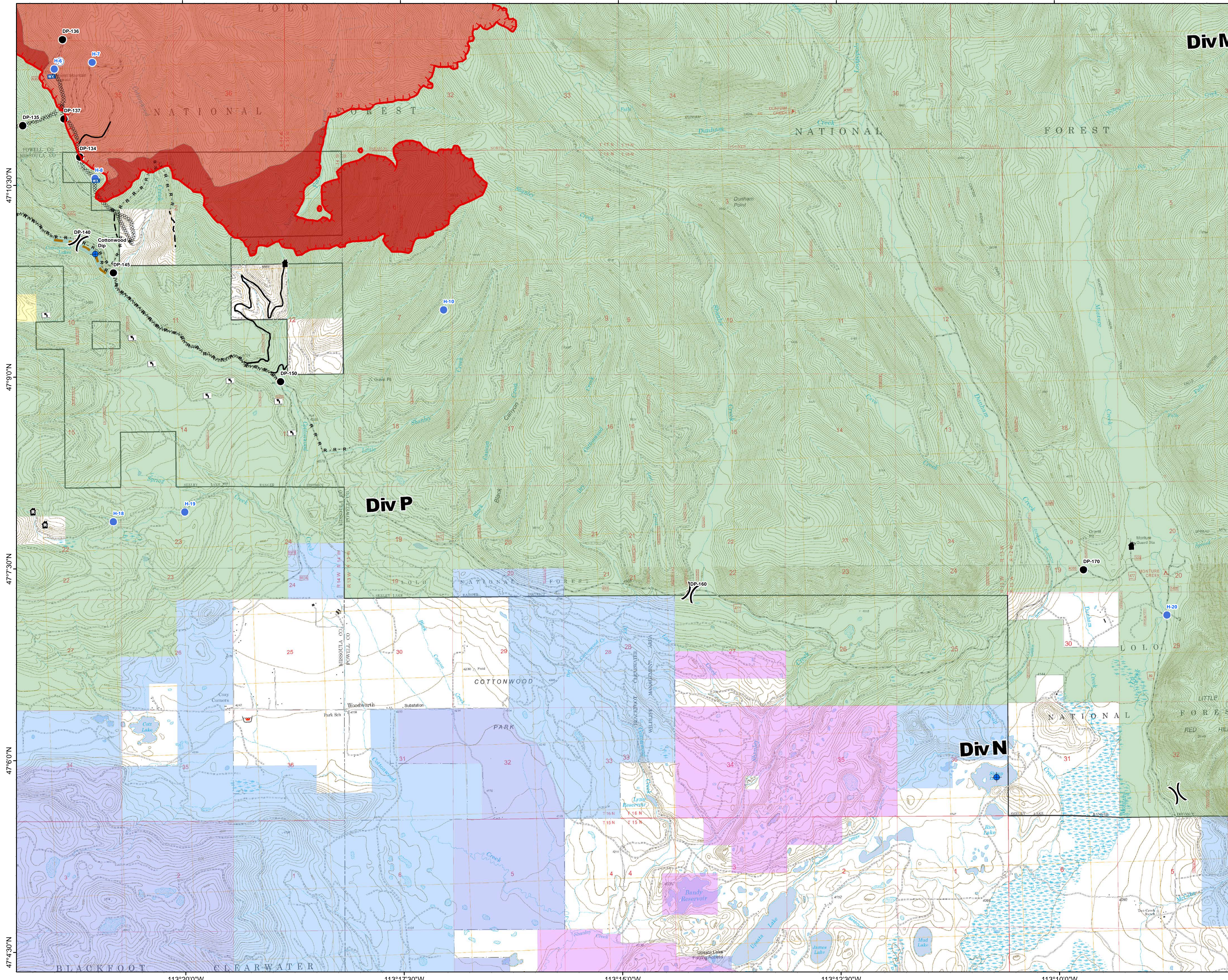
MT-LNF-001464

DIV P

Operations Map

August 28, 2017

27,863 Acres (IR Flight 8/27/17 2255)



- () Division Break
- (R) Repeater
- Retardant/Mud Pit
- Dip Site
- Drop Point
- Helispot
- Mobile Weather Unit
- Turn Around Area
- Uncontrolled Fire Edge
- H · H · Completed Hand Line
- R · R · Road as Completed Line
- Completed Dozer Line
- Fire Break Planned or Incomplete
- Planned Fire Line
- Ridge/Geographic Feature
- Other Road
- Fire Perimeter
- IR IntenseHeat
- Montana Fish, Wildlife, and Parks
- Montana State Trust Lands
- Montana University System
- US Bureau of Land Management
- US Forest Service

Northern Rockies
Incident Management
Team

0 0.5 1 2 Miles