

# Rice Ridge Fire

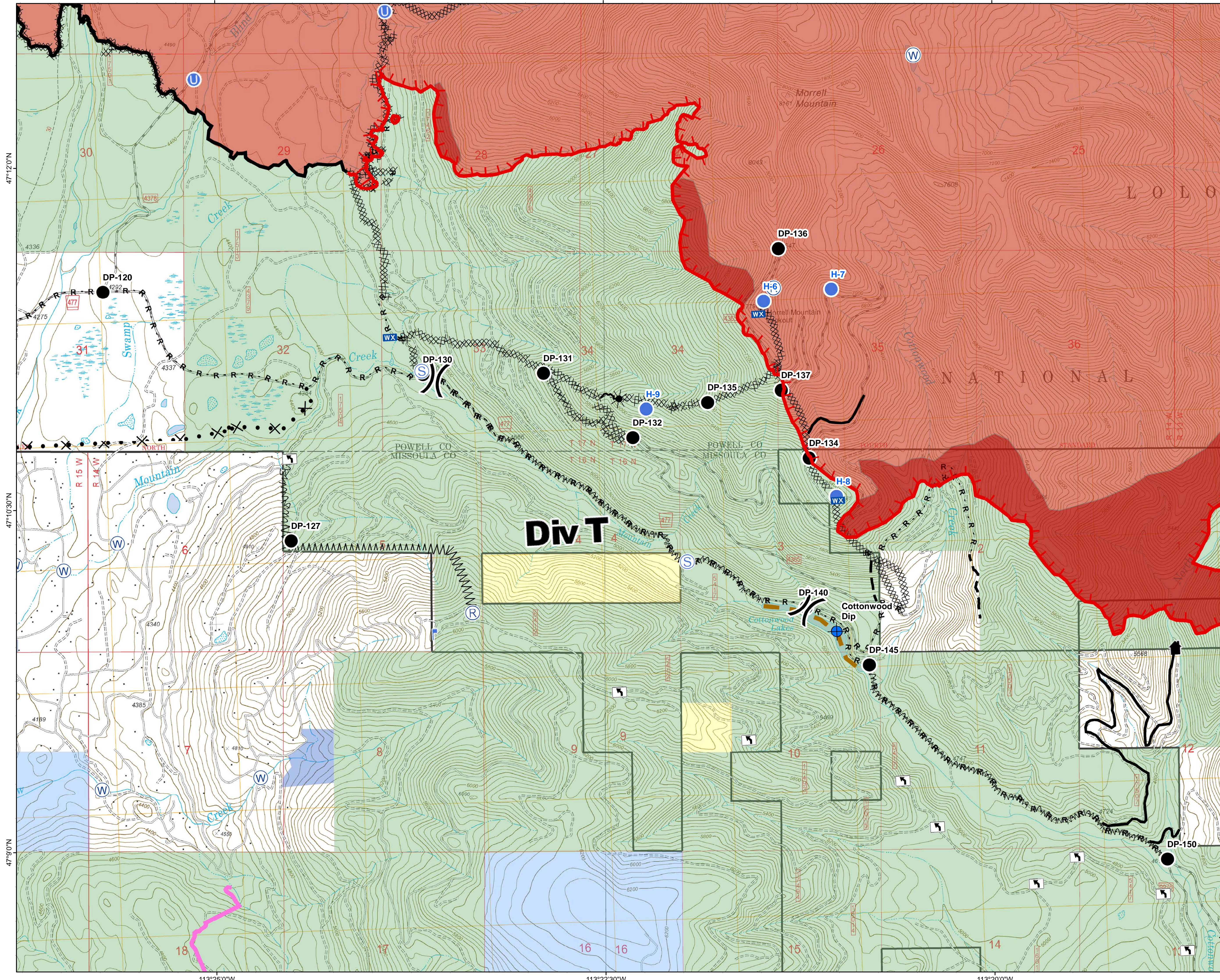
MT-LNF-001464

DIV T

Operations Map

August 28, 2017

27,863 Acres (IR Flight 8/27/17 2255)



- ( ) Division Break
- (R) Repeater
- (D) Dip Site
- (●) Drop Point
- (U) Unimproved Landing Area
- (H) Helispot
- (L) Lookout
- (WX) Mobile Weather Unit
- (S) Staging Area
- (W) Water Source
- (T) Turn Around Area
- (—) Completed Line
- (- - -) Uncontrolled Fire Edge
- (- · - · -) Completed Hand Line
- (R · R · R) Road as Completed Line
- (M) Line Break Completed
- (X) Completed Dozer Line
- (\*) Explosive Line
- (X · · · X) Proposed Dozer Line
- (M) Fire Break Planned or Incomplete
- (- - -) Planned Fire Line
- (- · - · -) Highlighted Manmade Feature
- (—) Ridge/Geographic Feature
- (—) Other
- (—) Other Road
- (Red) Fire Perimeter
- (Red) IR\_IntenseHeat
- (Blue) County Government
- (Blue) Montana State Trust Lands
- (Yellow) US Bureau of Land Management
- (Green) US Forest Service

## Div T