

Rice Ridge Fire

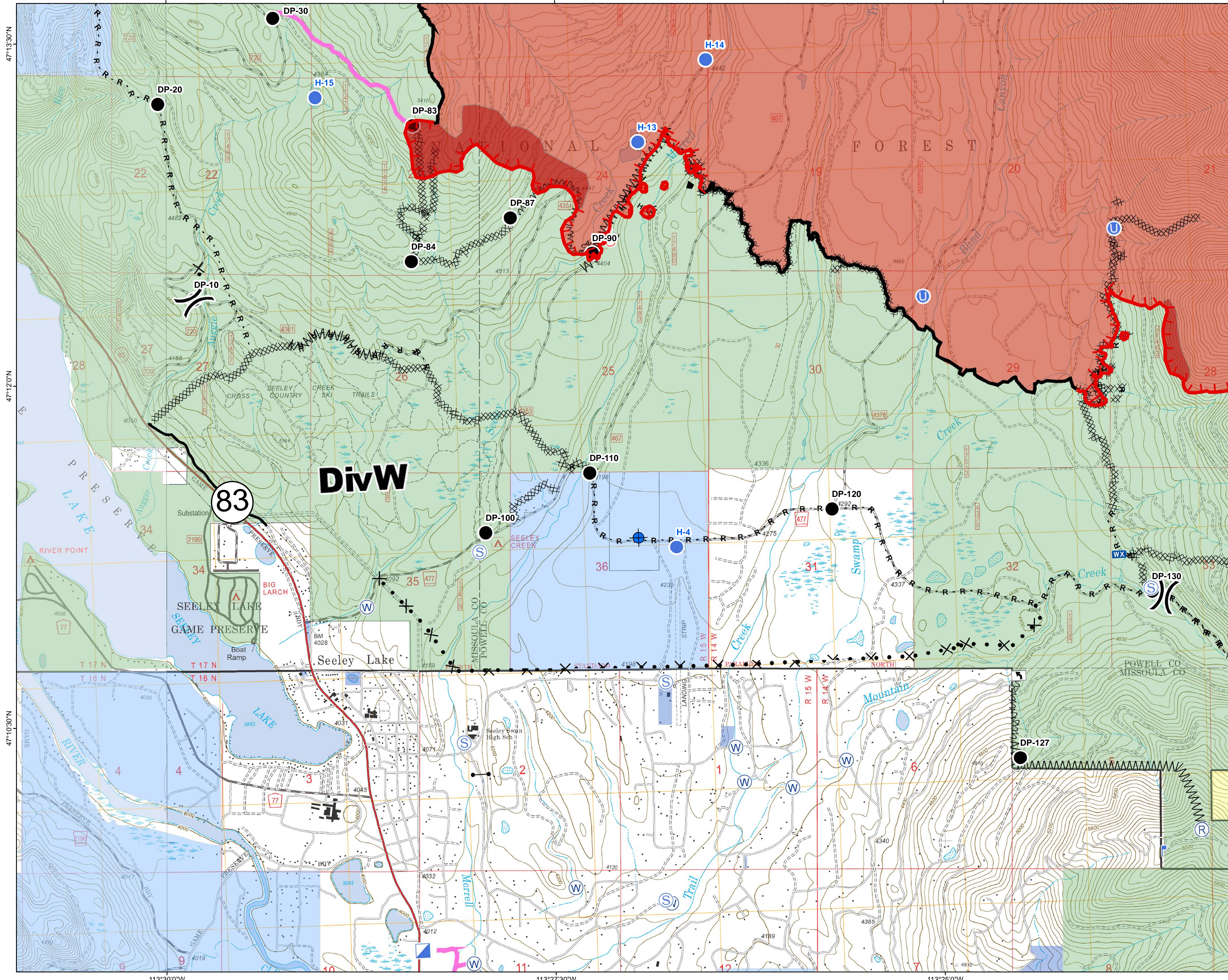
MT-LNF-001464

DIV W

Operations Map

August 28, 2017

27,863 Acres (IR Flight 8/27/17 2255)



- () Division Break
- (R) Repeater
- (D) Dip Site
- (●) Drop Point
- (U) Unimproved Landing Area
- (H) Helispot
- (I) Incident Command Post
- (L) Lookout
- (WX) Mobile Weather Unit
- (S) Spot Fire
- (S) Staging Area
- (W) Water Source
- (—) Gate - No through Access
- (T) Turn Around Area
- (—) Completed Line
- (—) Uncontrolled Fire Edge
- (H · H ·) Completed Hand Line
- (R · R ·) Road as Completed Line
- (M) Line Break Completed
- (X · X ·) Completed Dozer Line
- (X · · ·) Proposed Dozer Line
- (~) Fire Break Planned or Incomplete
- (· · · ·) Highlighted Manmade Feature
- (—) Other
- (—) Other Road
- (Red) Fire Perimeter
- (Red) IR_IntenseHeat
- (Blue) County Government
- (Blue) Montana State Trust Lands
- (Yellow) US Bureau of Land Management
- (Green) US Forest Service

