

# Rice Ridge Fire

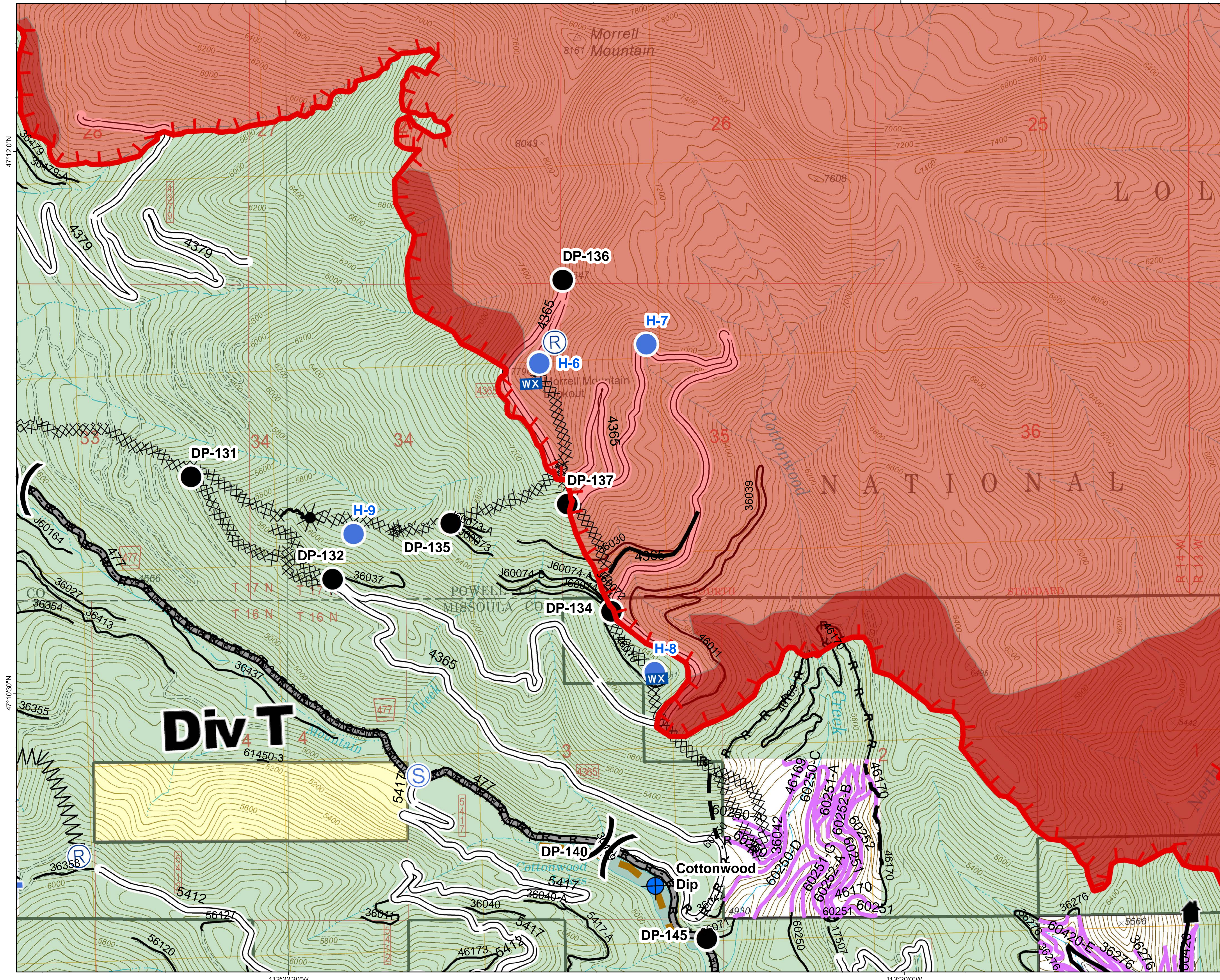
MT-LNF-001464

DIV T

Operations Map

August 28, 2017

27,863 Acres (IR Flight 8/27/17 2255)



- ( ) Division Break
- (R) Repeater
- (H) Dip Site
- (●) Drop Point
- (●) Helispot
- (T) Lookout
- (WX) Mobile Weather Unit
- (S) Staging Area
- (---) Uncontrolled Fire Edge
- (H-H) Completed Hand Line
- (R-R) Road as Completed Line
- (M/M) Line Break Completed
- (XXXX) Completed Dozer Line
- (\*) Explosive Line
- (~) Fire Break Planned or Incomplete
- (---) Planned Fire Line
- (---) Ridge/Geographic Feature
- (---) Forest Service Undetermined
- (---) Other Road
- (---) Forest Service System Roads
- 1 - BASIC(CLOSED); 2 - HIGH CLEARANCE
- 3 - PASSENGER CARS; 4 - MODERATE COMFORT; 5 - HIGH COMFORT
- (---) Private Roads
- (---) Fire Perimeter
- (---) IR\_IntenseHeat
- (---) US Bureau of Land Management
- (---) US Forest Service

# Div T

