

Rice Ridge Fire

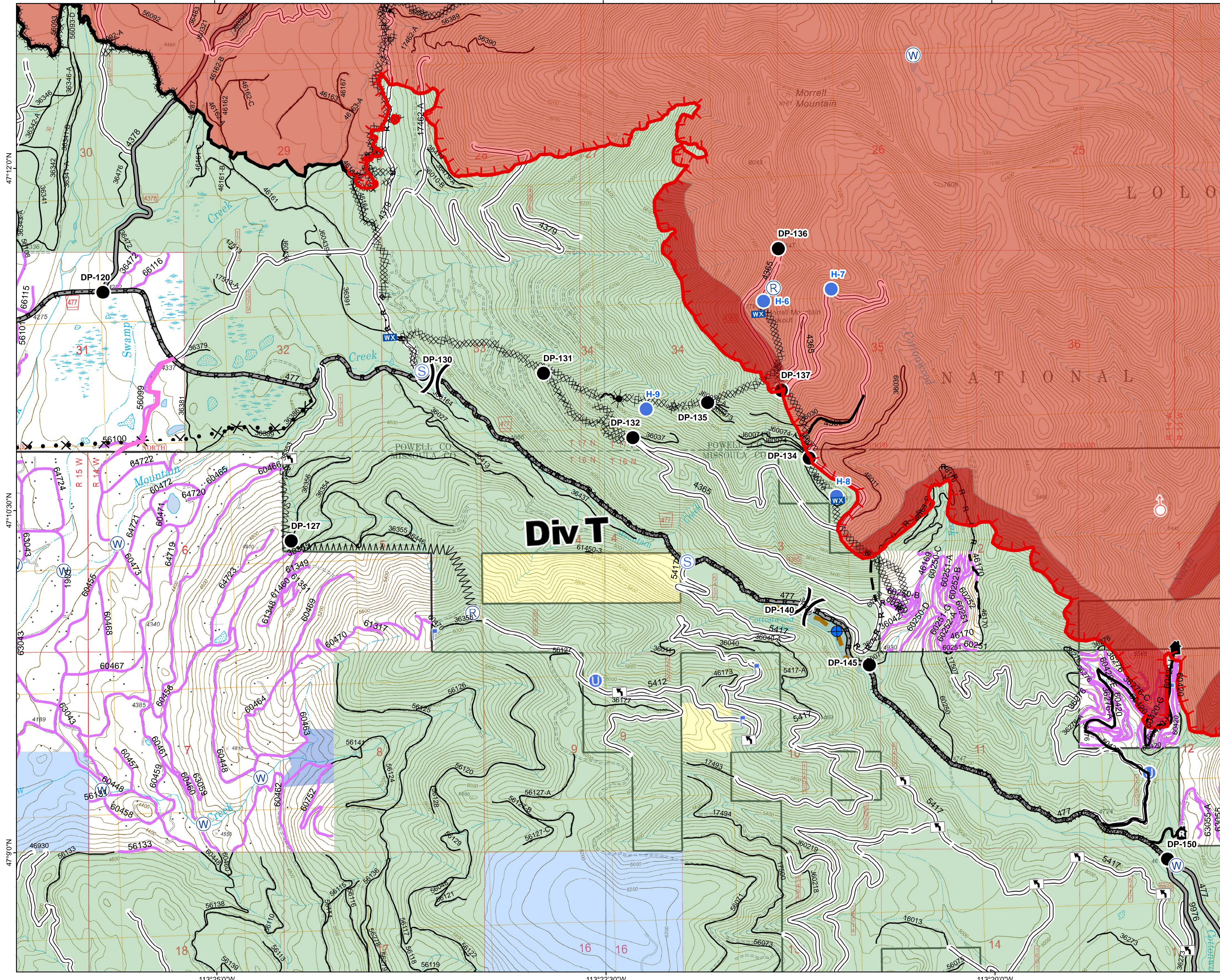
MT-LNF-001464

DIV T

Operations Map

August 29, 2017

30,661 Acres (IR Flight 8/28/17 2234)



- () Division Break
- (R) Repeater
- (D) Dip Site
- (●) Drop Point
- (U) Unimproved Landing Area
- (H) Helispot
- (L) Lookout
- (WX) Mobile Weather Unit
- (S) Spot Fire
- (S) Staging Area
- (W) Water Source
- (T) Turn Around Area
- (—) Completed Line
- (---) Uncontrolled Fire Edge
- (---) Completed Hand Line
- (---) Road as Completed Line
- (---) Line Break Completed
- (---) Completed Dozer Line
- (---) Explosive Line
- (---) Proposed Dozer Line
- (---) Fire Break Planned or Incomplete
- (---) Planned Fire Line
- (---) Highlighted Manmade Feature
- (---) Ridge/Geographic Feature
- (---) Other
- (---) Forest Service Undetermined
- (---) Other Road
- (---) Forest Service System Roads
- 1 - BASIC(CLOSED); 2 - HIGH CLEARANCE
- 3 - PASSENGER CARS; 4 - MODERATE COMFORT; 5 - HIGH COMFORT
- (---) Private Roads
- (---) Other Forest Roads
- (---) Fire Perimeter
- (---) IR_IntenseHeat
- (---) County Government
- (---) Montana State Trust Lands
- (---) US Bureau of Land Management
- (---) US Forest Service

Northern Rockies
Incident Management
Team

0 0.25 0.5 1 Miles