

# Rice Ridge Fire

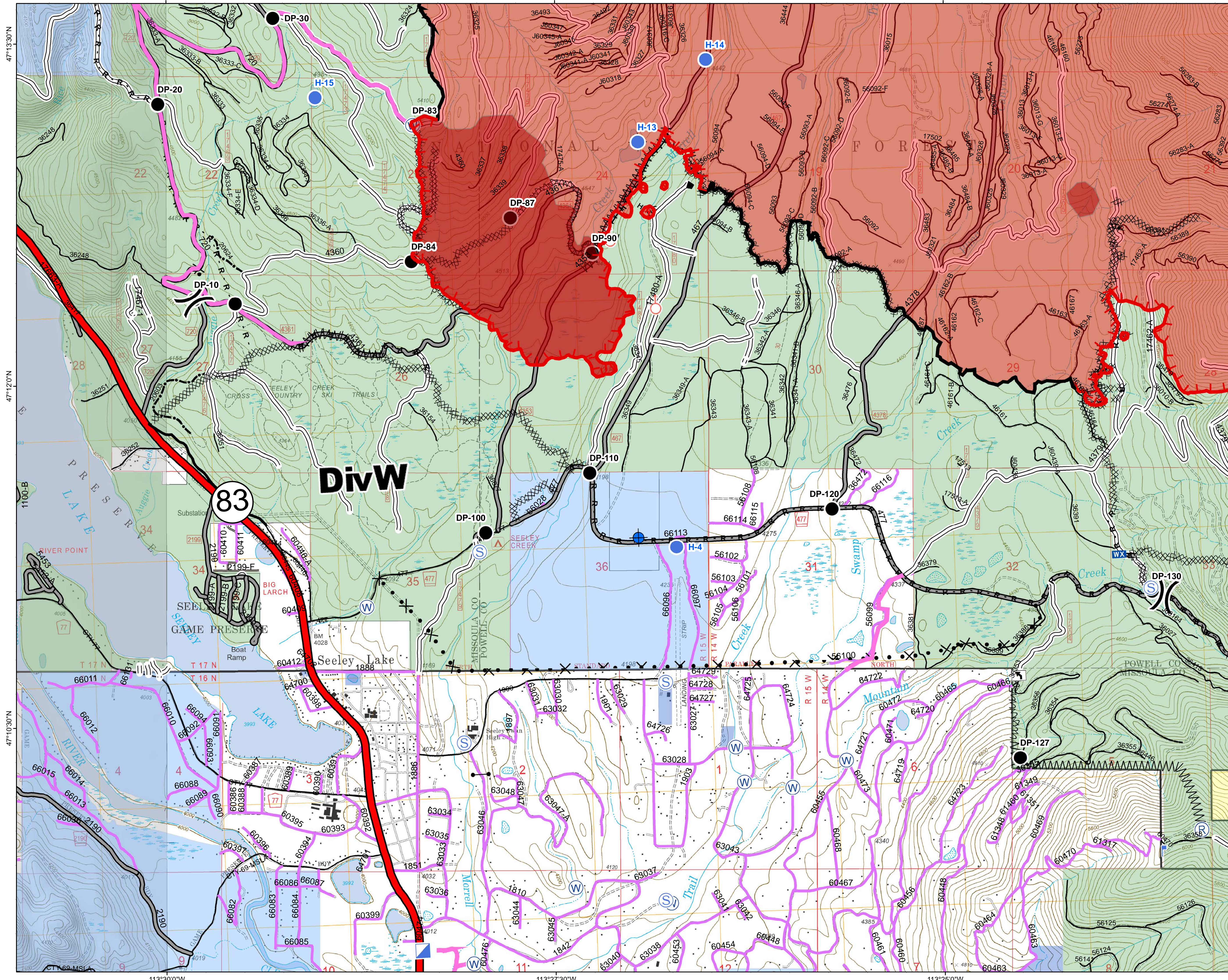
MT-LNF-001464

DIV W

## Operations Map

### August 29, 2017

30,661 Acres (IR Flight 8/28/17 2234)



- ( ) Division Break
- (R) Repeater
- (D) Dip Site
- (●) Drop Point
- (●) Helispot
- (□) Incident Command Post
- (↑) Lookout
- (WX) Mobile Weather Unit
- (♂) Spot Fire
- (S) Staging Area
- (W) Water Source
- (—) Gate - No through Access
- (⊞) Turn Around Area
- (—) Completed Line
- (—) Uncontrolled Fire Edge
- (H · H ·) Completed Hand Line
- (R · R ·) Road as Completed Line
- (—) Line Break Completed
- (X · X ·) Proposed Dozer Line
- (—) Fire Break Planned or Incomplete
- (· · ·) Highlighted Manmade Feature
- (—) Other
- (—) Forest Service Undetermined
- (—) Other Road
- (—) Interstate and Highways
- (—) Forest Service System Roads
- (1 - BASIC(CLOSED); 2 - HIGH CLEARANCE)
- (3 - PASSENGER CARS; 4 - MODERATE COMFORT; 5 - HIGH COMFORT)
- (—) Private Roads
- (—) County
- (—) Plum Creek Roads
- (—) Short Term Spec Roads
- (—) Fire Perimeter
- (—) IR\_IntenseHeat
- (—) County Government
- (—) Montana State Trust Lands
- (—) US Bureau of Land Management
- (—) US Forest Service

Northern Rockies  
Incident Management  
Team

0 0.25 0.5 1 Miles