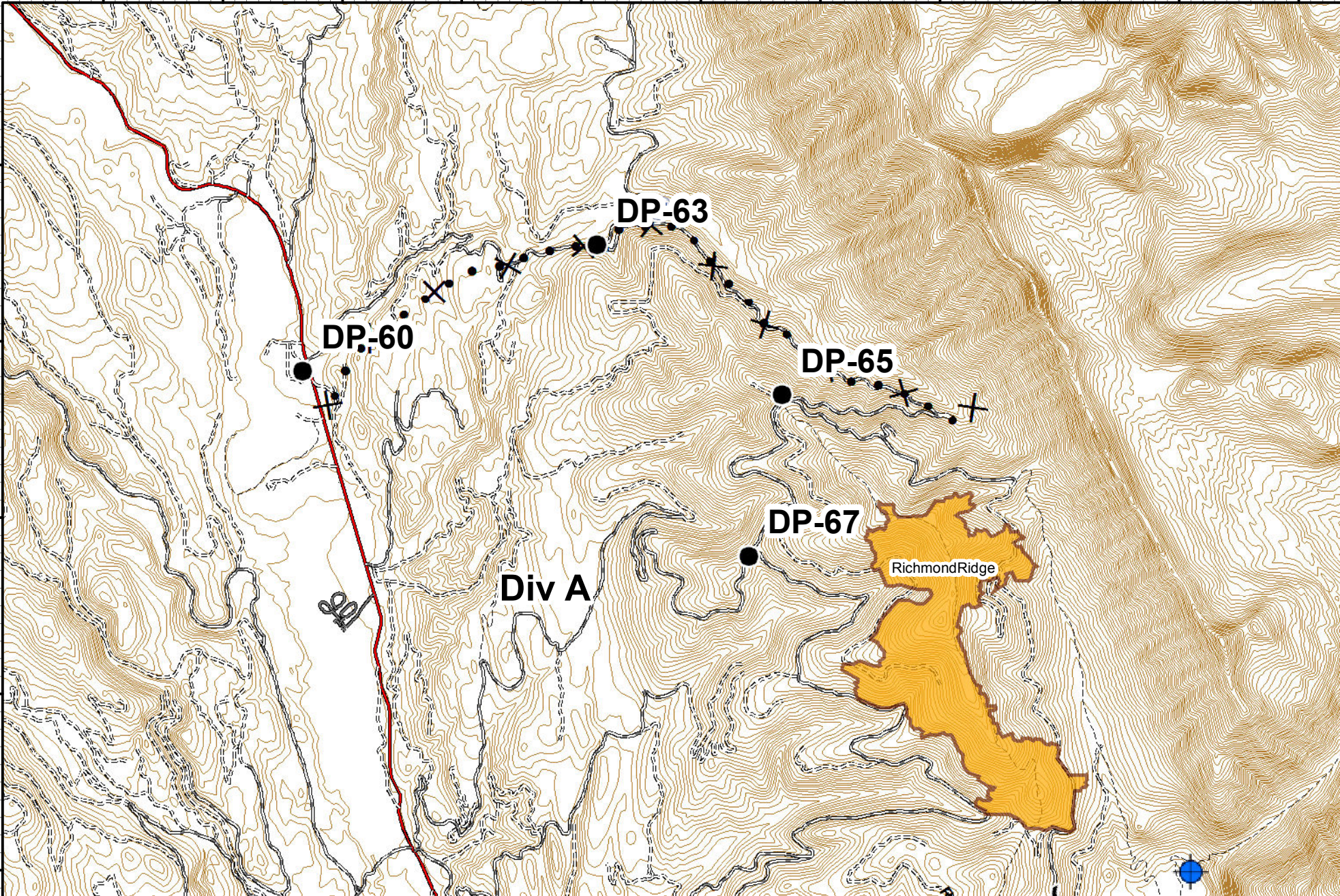


113°37'0"W 113°36'0"W 113°35'0"W 113°34'0"W 113°33'0"W 113°32'0"W 113°31'0"W 113°30'0"W 113°29'0"W 113°28'0"W 113°27'0"W

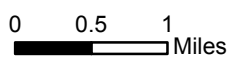
47°22'0"N
47°21'0"N
47°20'0"N
47°19'0"N
47°18'0"N

47°22'0"N
47°21'0"N
47°20'0"N
47°19'0"N
47°18'0"N

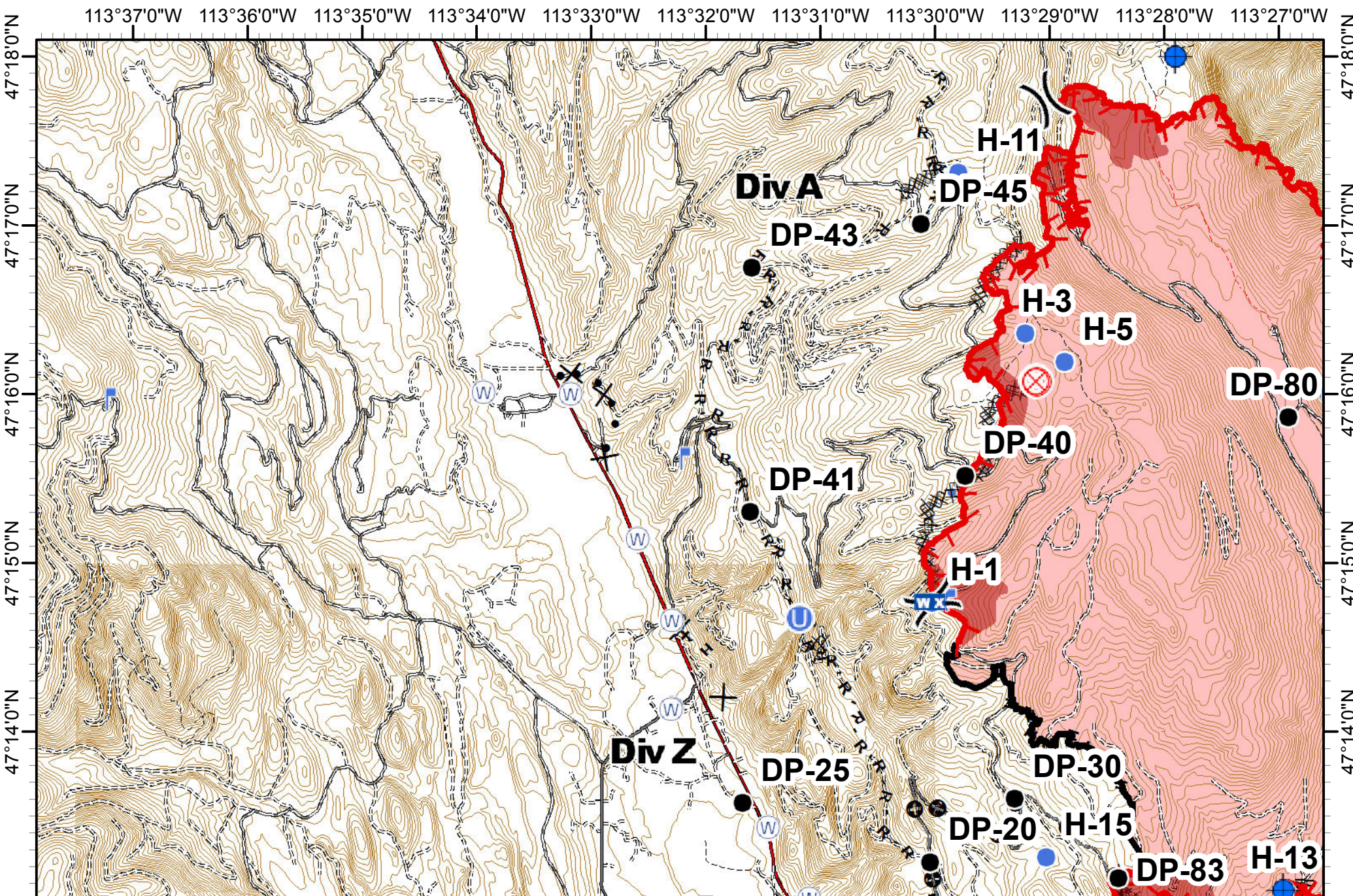


Rice Ridge Fire Incident Action Plan

MT-LNF-001464 MAP 1
08/29/2017
Approx Acres 27,863



Dip Site	Drop Point	Water Source	R - Road as Completed Line	Proposed Dozer Line	FireHistory
----------	------------	--------------	----------------------------	---------------------	-------------



Rice Ridge Fire Incident Action Plan

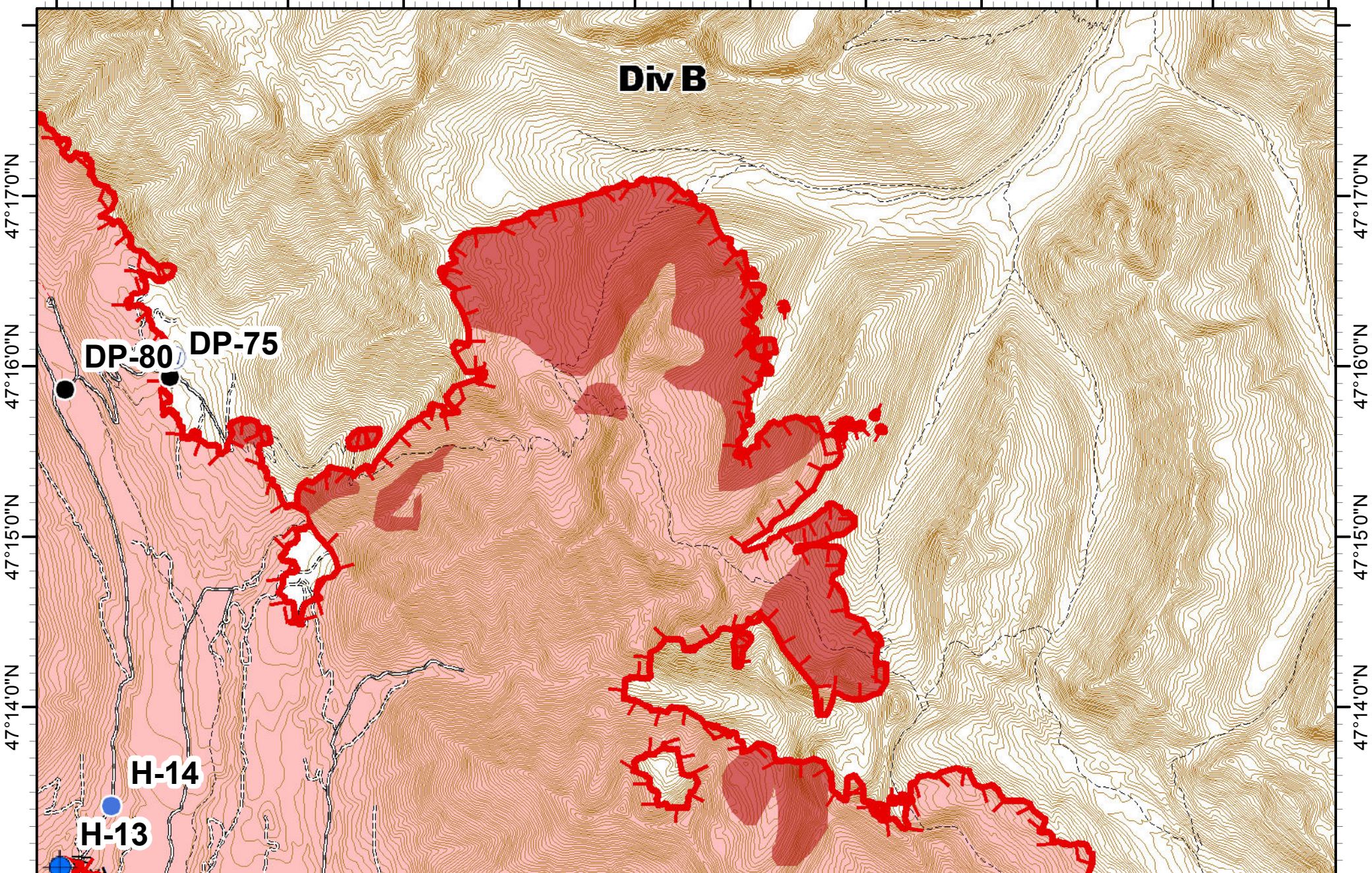
MT-LNF-001464
08/29/2017
Approx Acres 27,863

MAP 2

0 0.5 1 Miles

Division Break	Drop Point	Unimproved Landing Area	Lookout	Completed Dozer Line	Road as Completed Line	Active Burnout	Other
Dip Site	Fire Origin	Helispot	Mobile Weather Unit	Completed Hand Line	Line Break Completed	Proposed Dozer Line	IR_IntenseHeat
	Water Source						Wildfire Daily Fire Perimeter

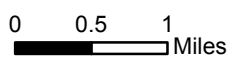
113°27'0"W 113°26'0"W 113°25'0"W 113°24'0"W 113°23'0"W 113°22'0"W 113°21'0"W 113°20'0"W 113°19'0"W 113°18'0"W 113°17'0"W 113°16'0"W



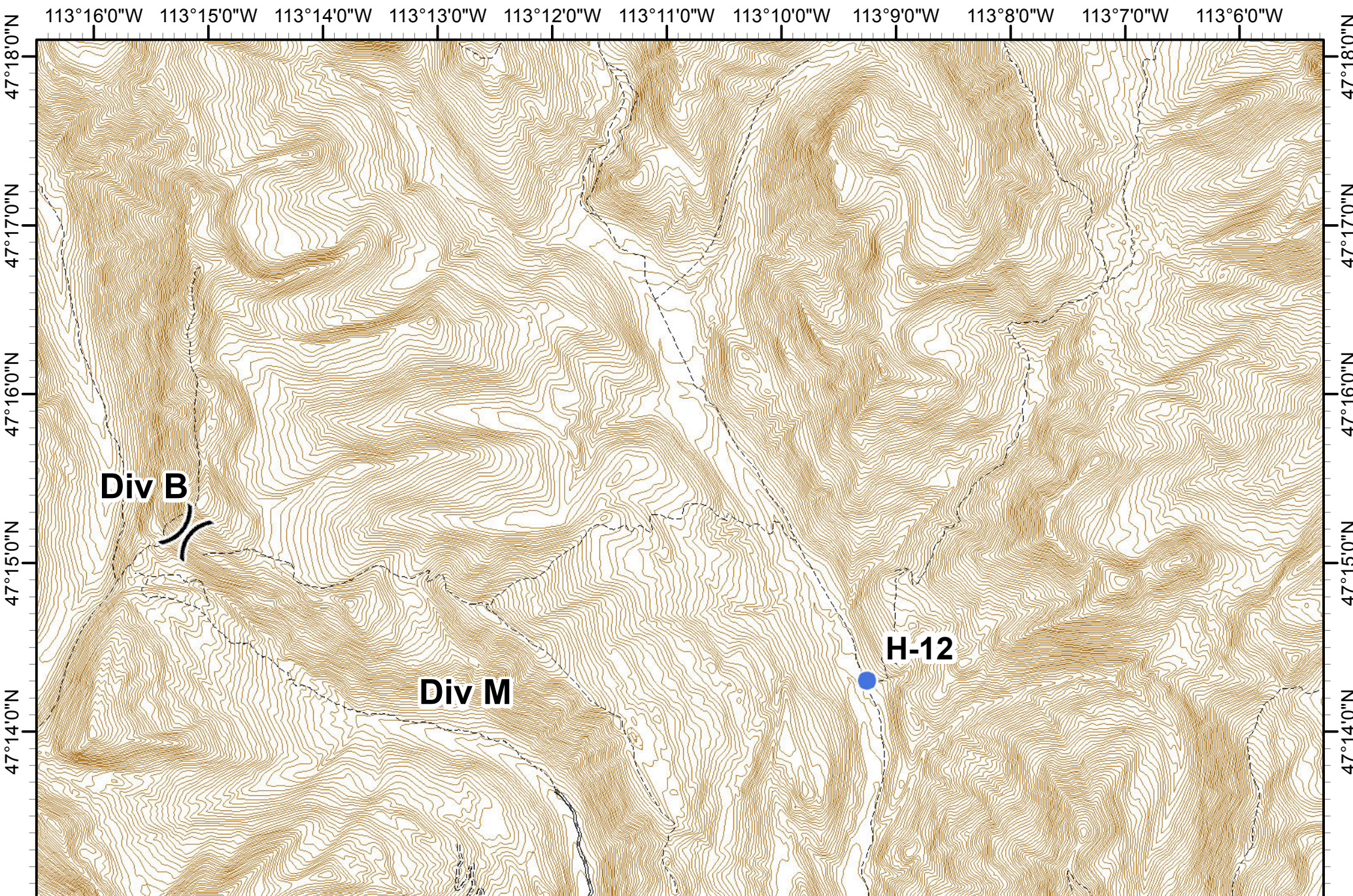
Rice Ridge Fire Incident Action Plan



MT-LNF-001464
08/29/2017
Approx Acres 27,863
MAP 3



Dip Site	Drop Point	Lookout	Completed Hand Line	Line Break Completed	IR_IntenseHeat
	Helispot	Water Source			Wildfire Daily Fire Perimeter

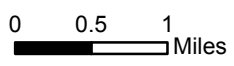


Rice Ridge Fire Incident Action Plan



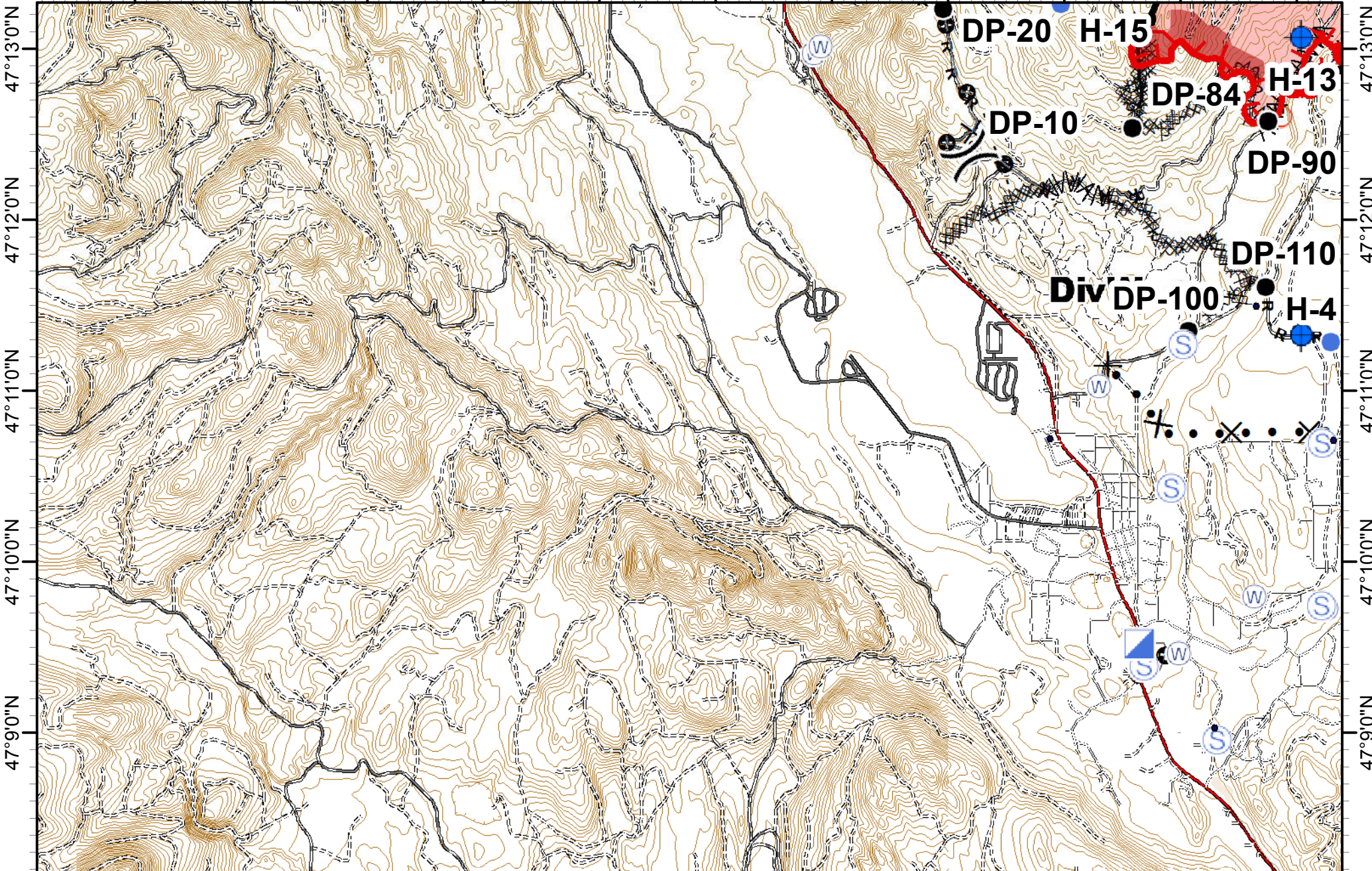
MT-LNF-001464
08/29/2017
Approx Acres 27,863

MAP 4



	Division Break		Helispot
--	----------------	--	----------

113°37'0"W 113°36'0"W 113°35'0"W 113°34'0"W 113°33'0"W 113°32'0"W 113°31'0"W 113°30'0"W 113°29'0"W 113°28'0"W 113°27'0"W



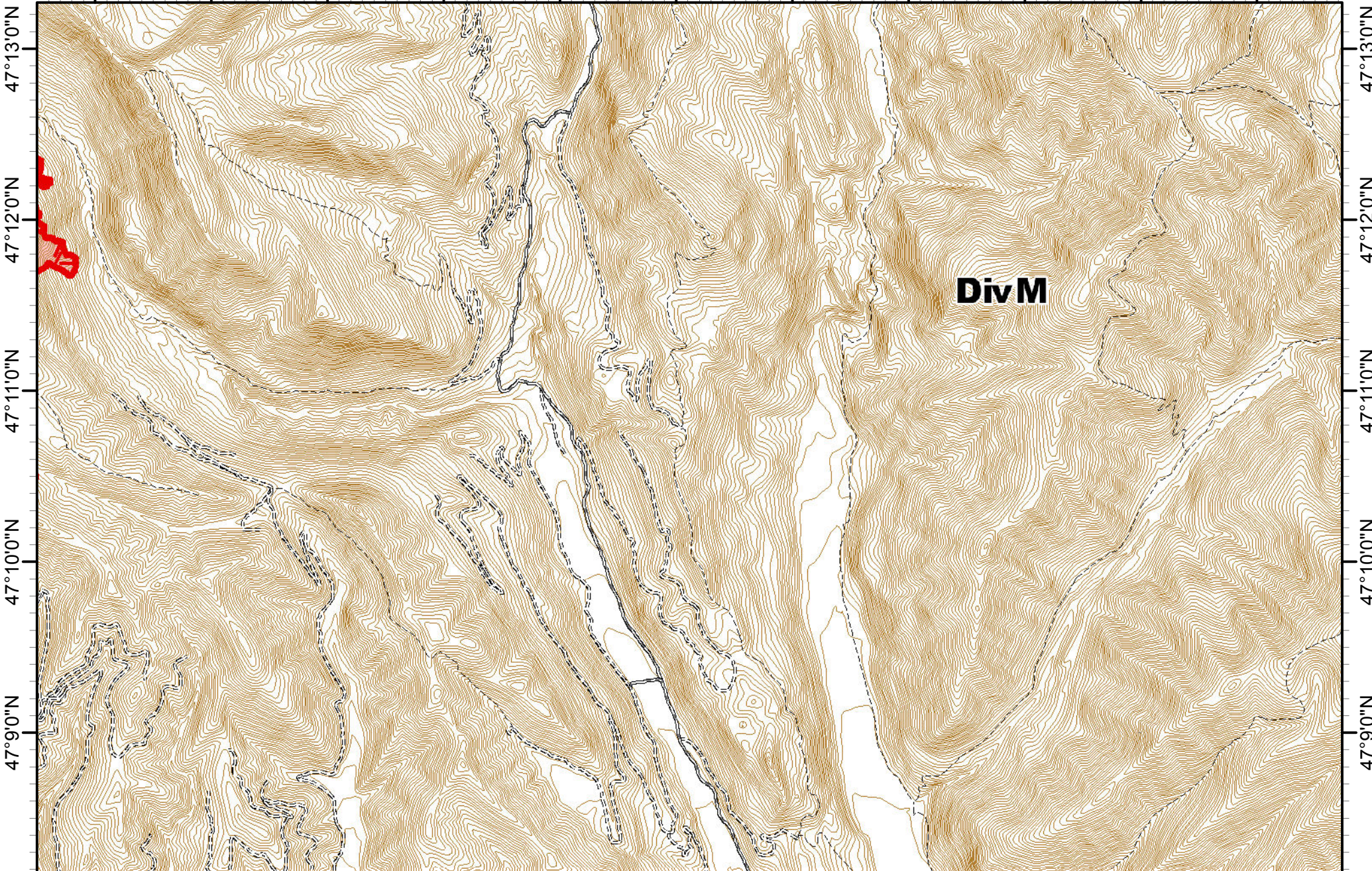
Rice Ridge Fire
Incident Action Plan

MT-LNF-001464 **MAP 5**
 08/29/2017
 Approx Acres 27,863

0 0.5 1 Miles

Division Break	Drop Point	Spot Fire	Staging Area	Completed Dozer Line	Road as Completed Line	Active Burnout	Fire Break Planned or Incomplete
Dip Site	Helispot	Water Source	Completed Hand Line	Line Break Completed	Proposed Dozer Line	Other	IR_IntenseHeat
Incident Command Post							Wildfire Daily Fire Perimeter

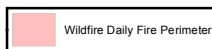
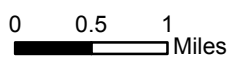
113°16'0"W 113°15'0"W 113°14'0"W 113°13'0"W 113°12'0"W 113°11'0"W 113°10'0"W 113°9'0"W 113°8'0"W 113°7'0"W 113°6'0"W



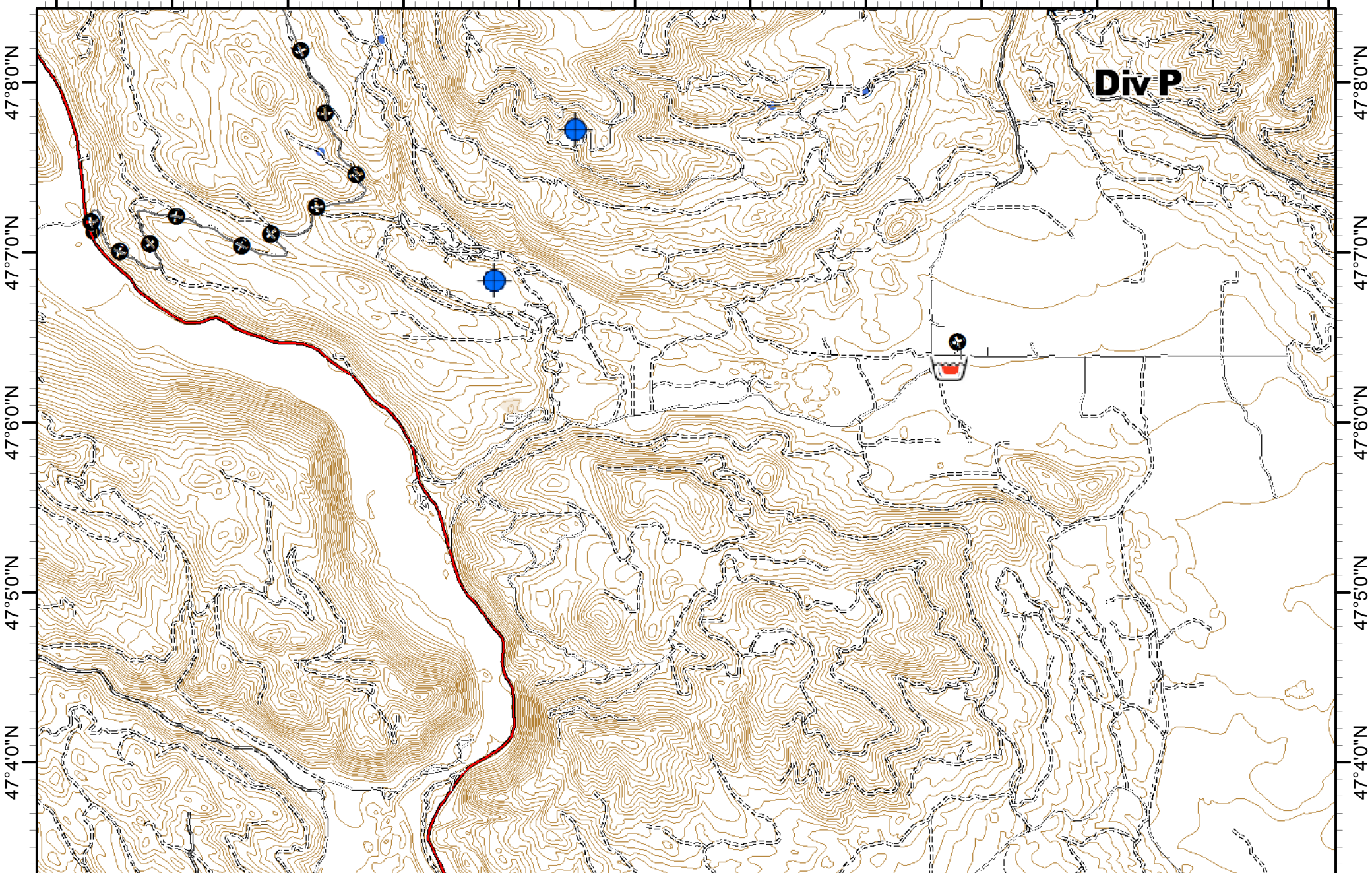
Rice Ridge Fire
Incident Action Plan



MT-LNF-001464
 08/29/2017
MAP 7
 Approx Acres 27,863



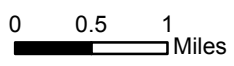
113°27'0"W 113°26'0"W 113°25'0"W 113°24'0"W 113°23'0"W 113°22'0"W 113°21'0"W 113°20'0"W 113°19'0"W 113°18'0"W 113°17'0"W 113°16'0"W









**Rice Ridge Fire
Incident Action Plan**

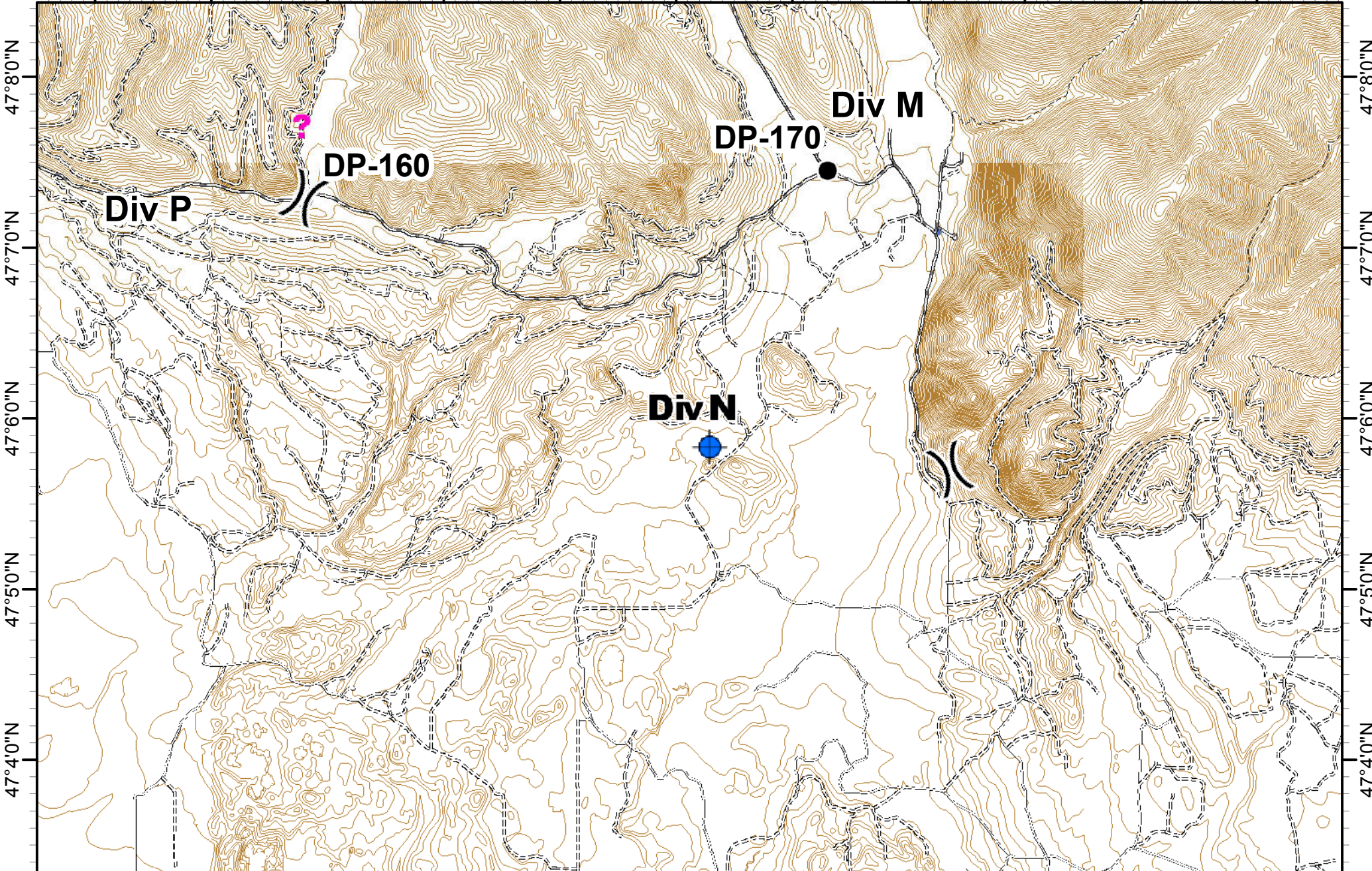


MT-LNF-001464 **MAP 8**
08/29/2017
Approx Acres 27,863



 Retardant/Mud Pit	 Dip Site	 Drop Point	 R - Road as Completed Line	 Other
	 Helispot			

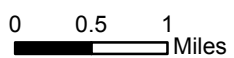
113°16'0"W 113°15'0"W 113°14'0"W 113°13'0"W 113°12'0"W 113°11'0"W 113°10'0"W 113°9'0"W 113°8'0"W 113°7'0"W 113°6'0"W


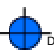





Rice Ridge Fire
Incident Action Plan



MT-LNF-001464 **MAP 9**
 08/29/2017
 Approx Acres 27,863



	Division Break		Dip Site		Drop Point		Other
			Hellspot				