

Rice Ridge Fire

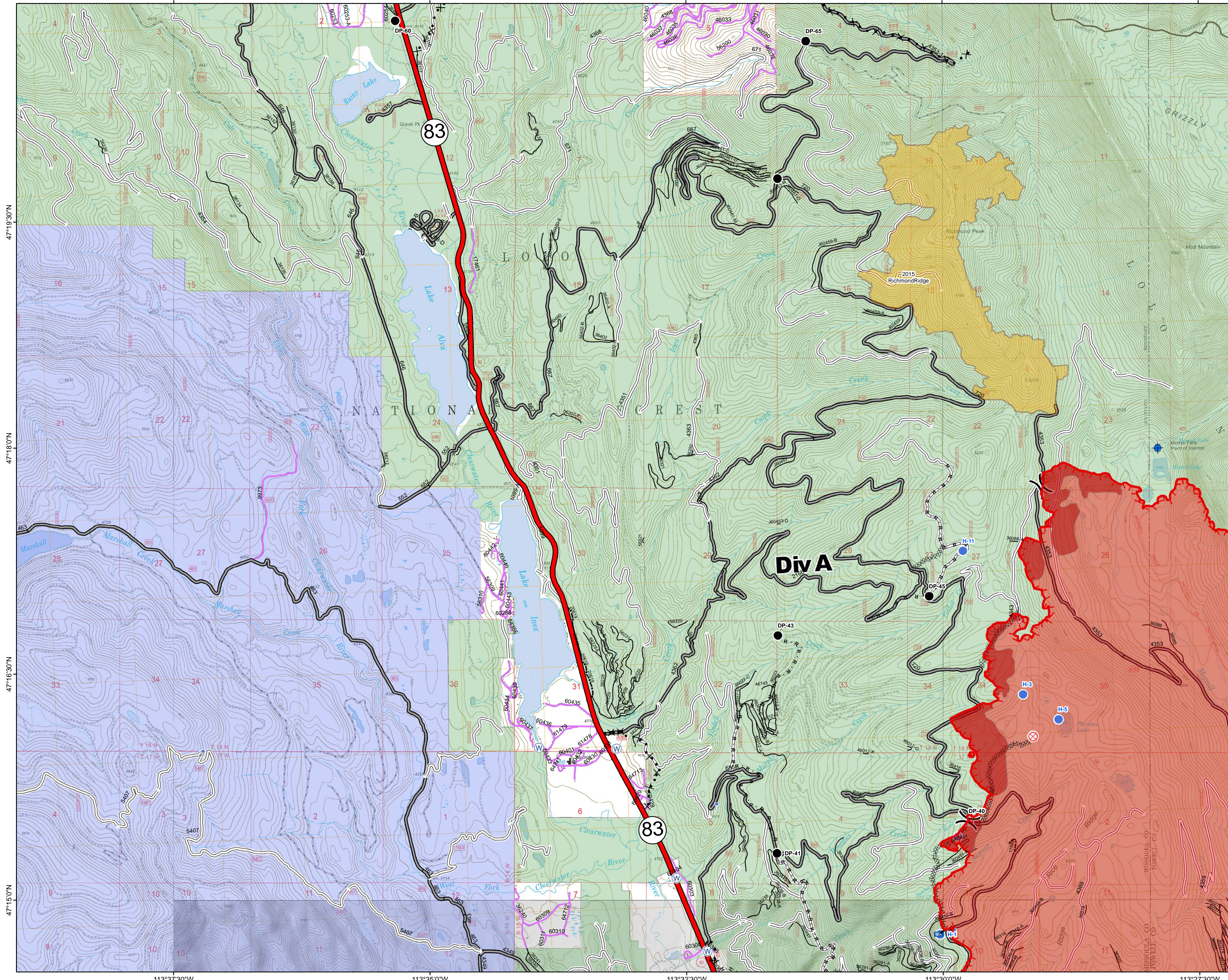
MT-LNF-001464

DIV A

Operations Map

August 29, 2017

30,661 Acres (IR Flight 8/28/17 2234)



- () Division Break
- ⊕ Dip Site
- Drop Point
- ⊗ Fire Origin
- ⊕ Unimproved Landing Area
- Helispot
- ⊕ Lookout
- ⊕ Mobile Weather Unit
- ⊕ Water Source
- Completed Line
- ⊕ Uncontrolled Fire Edge
- H · H · Completed Hand Line
- R · R · Road as Completed Line
- ⊗ Completed Dozer Line
- ⊗ · · · Proposed Dozer Line
- Forest Service Undetermined
- Other Road
- Interstate and Highways
- Forest Service System Roads
- 1 - BASIC(CLOSED); 2 - HIGH CLEARANCE
- 3 - PASSENGER CARS; 4 - MODERATE COMFORT; 5 - HIGH COMFORT
- Private Roads
- County
- Plum Creek Roads
- Short Term Spec Roads
- Fire Perimeter
- IR_IntenseHeat
- Fire History
- Montana Fish, Wildlife, and Parks
- US Forest Service

