

Rice Ridge Fire

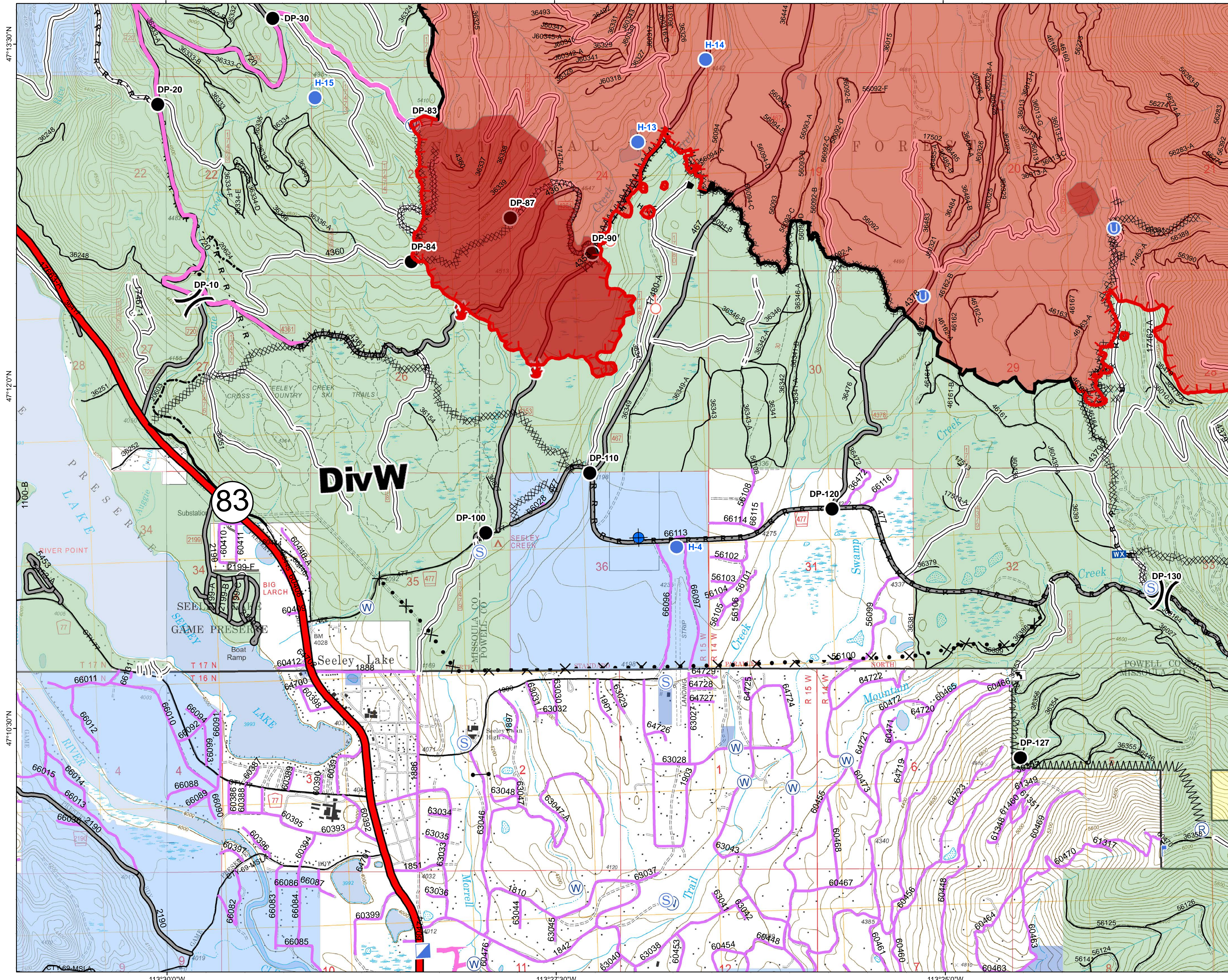
MT-LNF-001464

DIV W

Operations Map

August 29, 2017

30,661 Acres (IR Flight 8/28/17 2234)



- () Division Break
- (R) Repeater
- (D) Dip Site
- (●) Drop Point
- (F) Fire Location
- (U) Unimproved Landing Area
- (H) Helispot
- (ICP) Incident Command Post
- (L) Lookout
- (WX) Mobile Weather Unit
- (S) Spot Fire
- (S) Staging Area
- (W) Water Source
- (G) Gate - No through Access
- (TA) Turn Around Area
- (C) Completed Line
- (U) Uncontrolled Fire Edge
- (H) Completed Hand Line
- (R) Road as Completed Line
- (M) Line Break Completed
- (X) Proposed Dozer Line
- (W) Fire Break Planned or Incomplete
- (H) Highlighted Manmade Feature
- (P) Other
- (F) Forest Service Undetermined
- (O) Other Road
- (I) Interstate and Highways
- (FS) Forest Service System Roads
- (1) BASIC(CLOSED); 2 - HIGH CLEARANCE
- (3) PASSENGER CARS; 4 - MODERATE COMFORT; 5 - HIGH COMFORT
- (P) Private Roads
- (C) County
- (PL) Plum Creek Roads
- (SS) Short Term Spec Roads
- (F) Fire Perimeter
- (IR) IntenseHeat
- (CG) County Government
- (MT) Montana State Trust Lands
- (BL) US Bureau of Land Management
- (US) US Forest Service

Northern Rockies
Incident Management
Team

