

Rice Ridge Fire

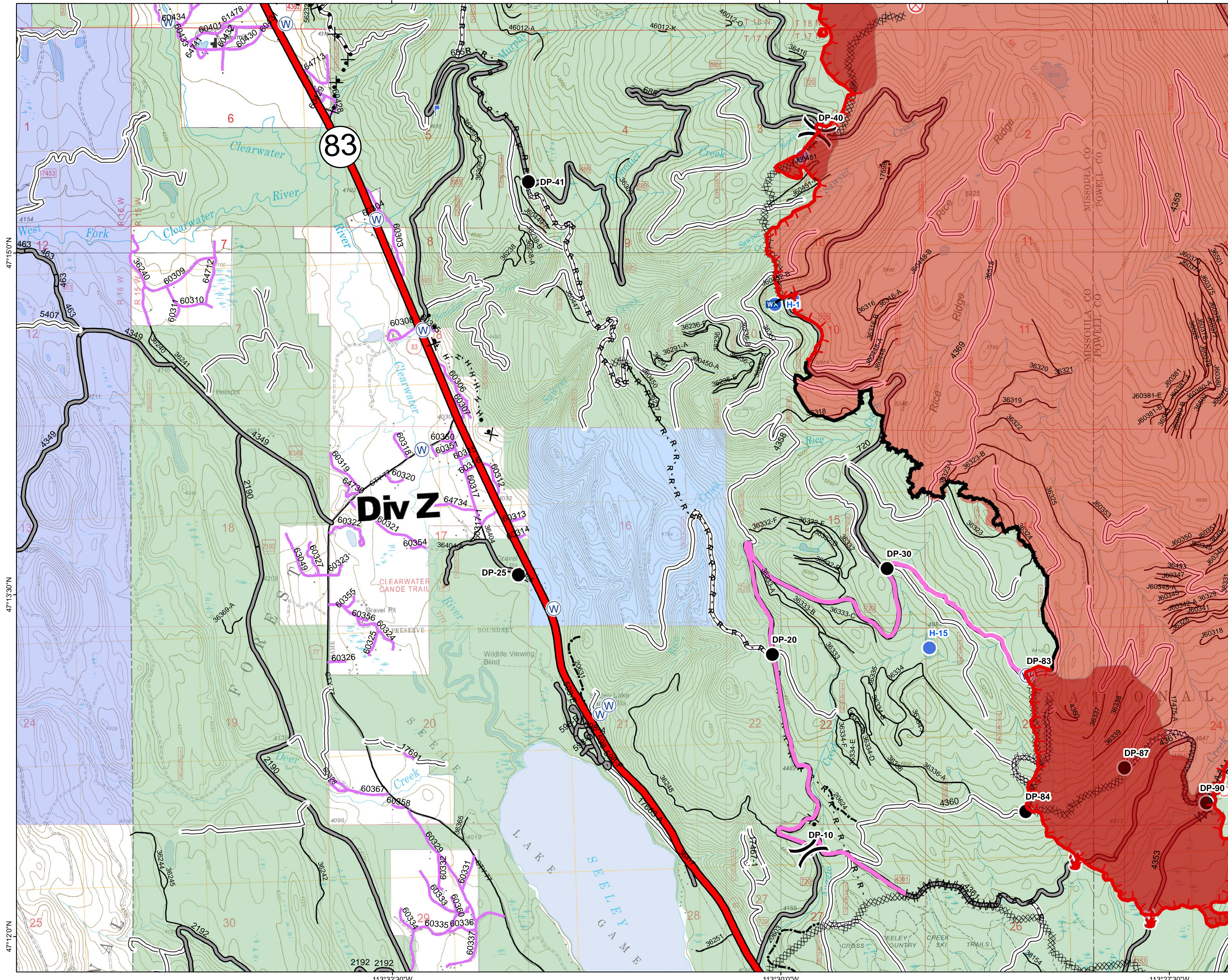
MT-LNF-001464

DIV Z

Operations Map

August 29, 2017

30,661 Acres (IR Flight 8/28/17 2234)



- () Division Break
- Drop Point
- 🔥 Fire Location
- ⊗ Fire Origin
- 📍 Unimproved Landing Area
- 📍 Helispot
- 📍 Lookout
- 📍 Mobile Weather Unit
- 📍 Spot Fire
- 📍 Water Source
- Completed Line
- 🔴 Uncontrolled Fire Edge
- H · H · Completed Hand Line
- R · R · Road as Completed Line
- ⊘ Line Break Completed
- ⊘ Completed Dozer Line
- ⊘ Proposed Dozer Line
- ⊘ Fire Break Planned or Incomplete
- Other
- Forest Service Undetermined
- Other Road
- 🔴 Interstate and Highways
- Forest Service System Roads
- 1 - BASIC(CLOSED); 2 - HIGH CLEARANCE
- 3 - PASSENGER CARS; 4 - MODERATE COMFORT; 5 - HIGH COMFORT
- Private Roads
- County
- Plum Creek Roads
- Short Term Spec Roads
- 🔴 Fire Perimeter
- 🔴 IR_IntenseHeat
- 📍 Montana Fish, Wildlife, and Parks
- 📍 Montana State Trust Lands
- 📍 US Forest Service

Northern Rockies
Incident Management
Team

0 0.25 0.5 1 Miles