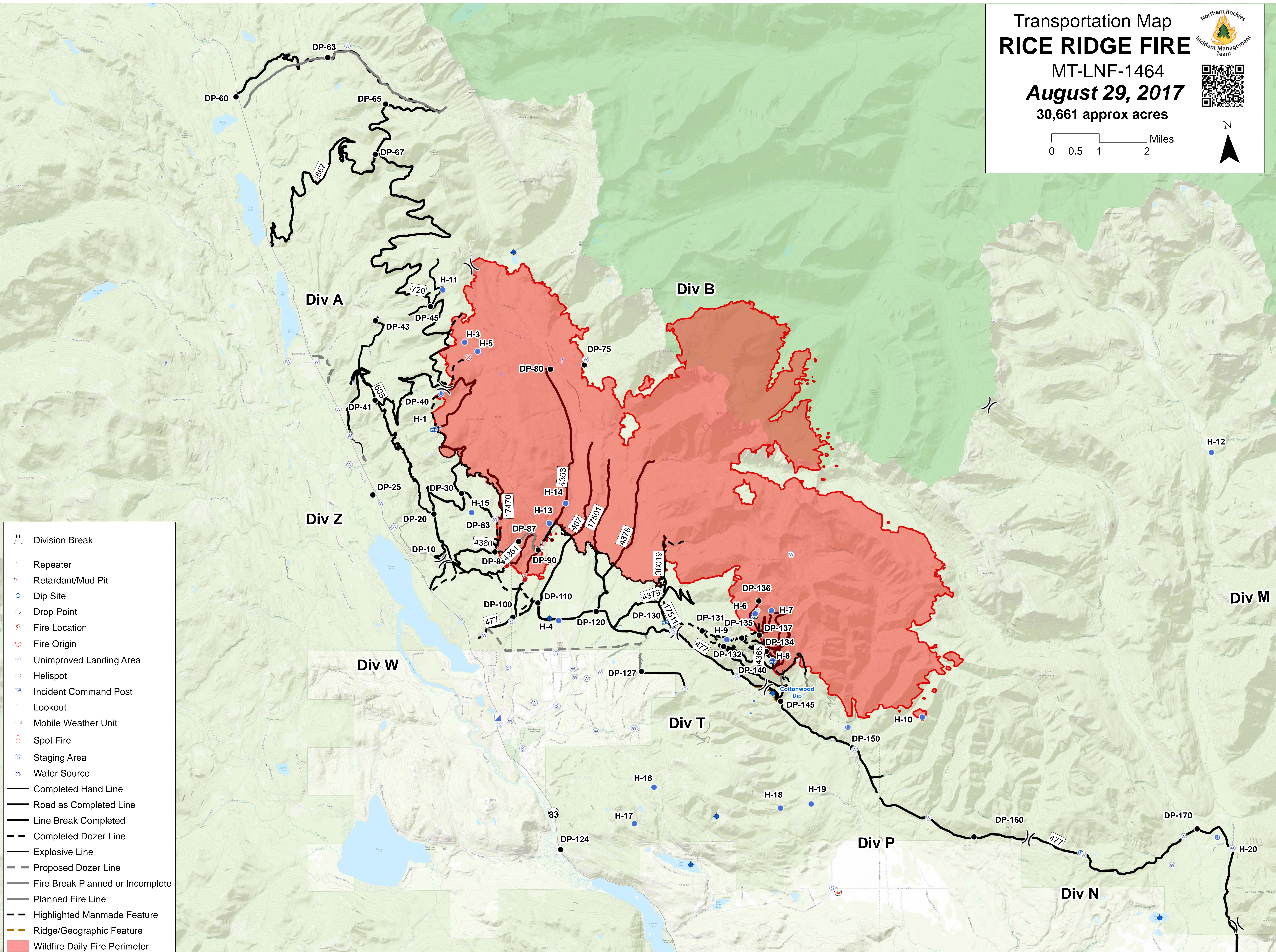
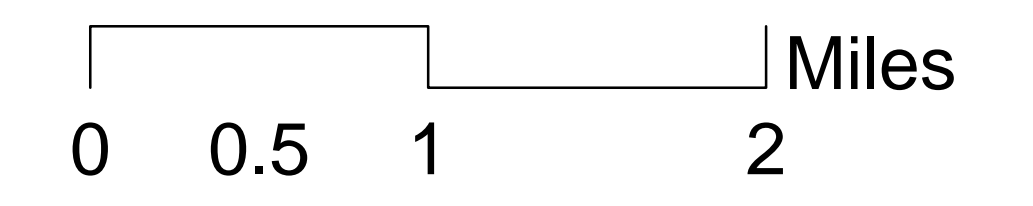


Transportation Map RICE RIDGE FIRE



MT-LNF-1464
August 29, 2017
30,661 approx acres



- Division Break
- Repeater
- Retardant/Mud Pit
- Dip Site
- Drop Point
- Fire Location
- Fire Origin
- Unimproved Landing Area
- Helispot
- Incident Command Post
- Lookout
- Mobile Weather Unit
- Spot Fire
- Staging Area
- Water Source
- Completed Hand Line
- Road as Completed Line
- Line Break Completed
- Completed Dozer Line
- Explosive Line
- Proposed Dozer Line
- Fire Break Planned or Incomplete
- Planned Fire Line
- Highlighted Manmade Feature
- Ridge/Geographic Feature
- Wildfire Daily Fire Perimeter

Sources: Esri, HERE, DeLorme, Intermap, iPlanet, P Corp., GEBCO, USGS, FAO, NPS, NRCAN, GeoBase, IGN, Kadaster NL, Ordnance Survey, Esri Japan, METI, Esri China (Hong Kong), Swisstopo, Mapbox, and the GIS User Community