

Public Information

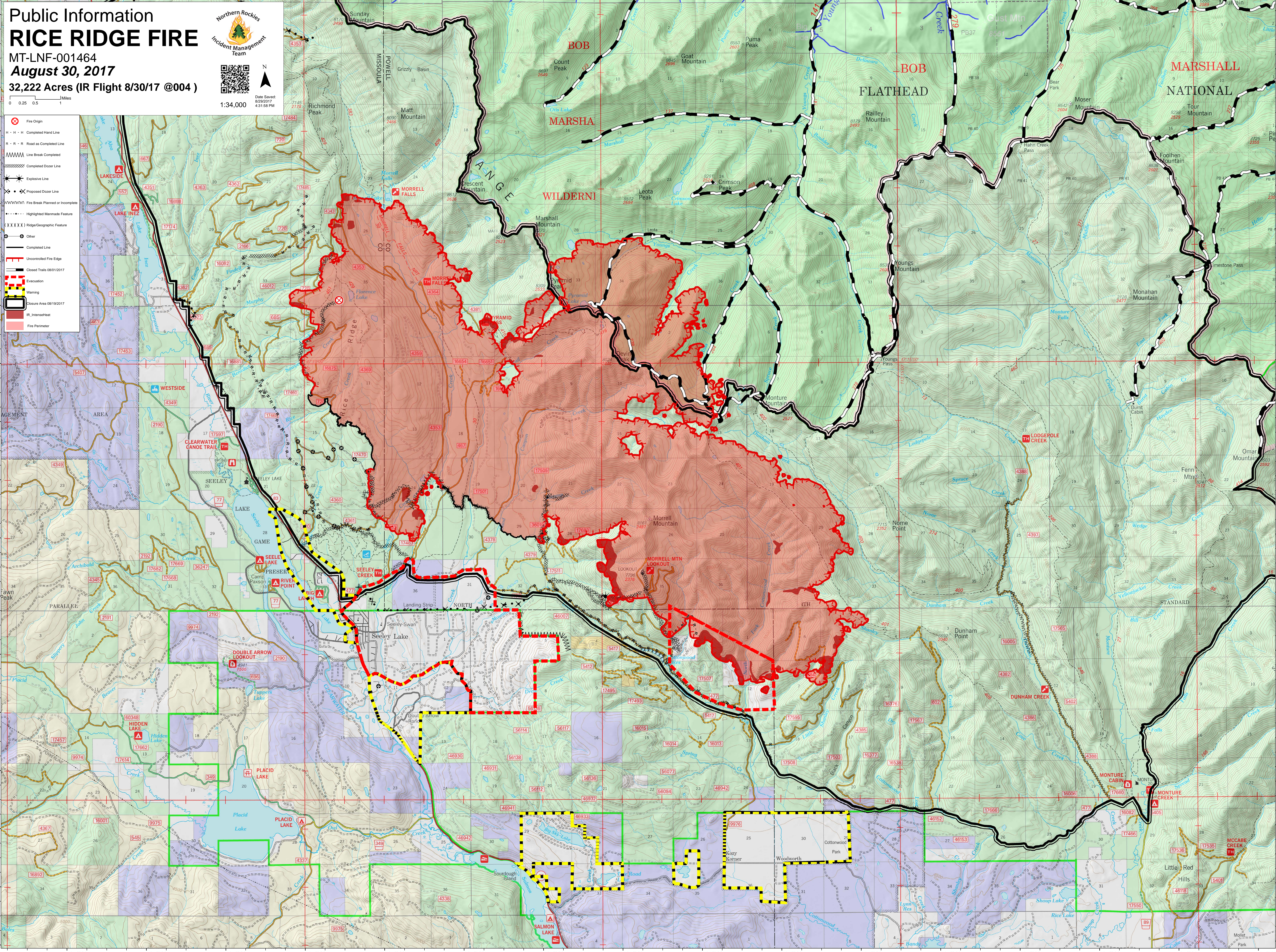
RICE RIDGE FIRE

MT-LNF-001464
August 30, 2017
32,222 Acres (IR Flight 8/30/17 @004)



Date Saved: 8/29/2017 4:31:58 PM
1:34,000

- Fire Origin
- Completed Hand Line
- Road as Completed Line
- Line Break Completed
- Completed Dozer Line
- Explosive Line
- Proposed Dozer Line
- Fire Break Planned or Incomplete
- Highlighted Manmade Feature
- Ridge/Geographic Feature
- Other
- Completed Line
- Uncontrolled Fire Edge
- Closed Trails 08/01/2017
- Evacuation
- Warning
- Closure Area 08/19/2017
- IR_IntenseHeat
- Fire Perimeter



113°36'0"W 113°34'0"W 113°32'0"W 113°30'0"W 113°28'0"W 113°26'0"W 113°24'0"W 113°22'0"W 113°20'0"W 113°18'0"W 113°16'0"W 113°14'0"W 113°12'0"W 113°10'0"W 113°8'0"W 113°6'0"W

47°21'0"N 47°20'0"N 47°19'0"N 47°18'0"N 47°17'0"N 47°16'0"N 47°15'0"N 47°14'0"N 47°13'0"N 47°12'0"N 47°11'0"N 47°10'0"N 47°9'0"N 47°8'0"N 47°7'0"N 47°6'0"N