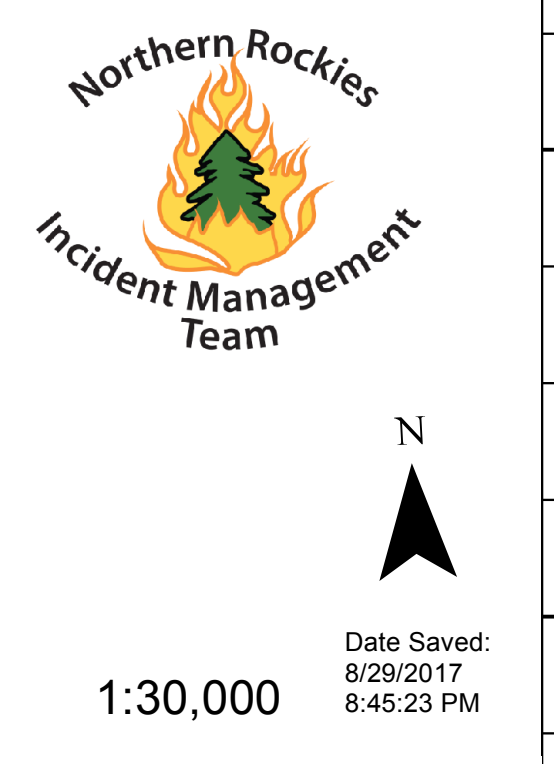


# Briefing Map

## RICE RIDGE FIRE

MT-LNF-001464  
**August 30, 2017**  
**32,222 Acres (IR Flight 8/30/17 @0004)**



- |       |                       |   |                                  |   |                |
|-------|-----------------------|---|----------------------------------|---|----------------|
| ( )   | Division Break        | — | Completed Line                   | ■ | IR_IntenseHeat |
| (R)   | Repeater              | — | Uncontrolled Fire Edge           | ■ | Fire Perimeter |
| (M)   | Retardant/Mud Pit     | — | Completed Hand Line              | ■ | Closure Area   |
| (●)   | Drop Point            | — | R-R-R Road as Completed Line     |   |                |
| (⊗)   | Fire Origin           | — | MMMM Line Break Completed        |   |                |
| (*)   | Helispot              | — | Completed Dozer Line             |   |                |
| (ICP) | Incident Command Post | — | Explosive Line                   |   |                |
| (L)   | Lookout               | — | Proposed Dozer Line              |   |                |
| (WX)  | Mobile Weather Unit   | — | Fire Break Planned or Incomplete |   |                |
| (S)   | Staging Area          | — | Highlighted Manmade Feature      |   |                |
| (W)   | Water Source          | — | (XXXX) Ridge/Geographic Feature  |   |                |

