

Rice Ridge Fire

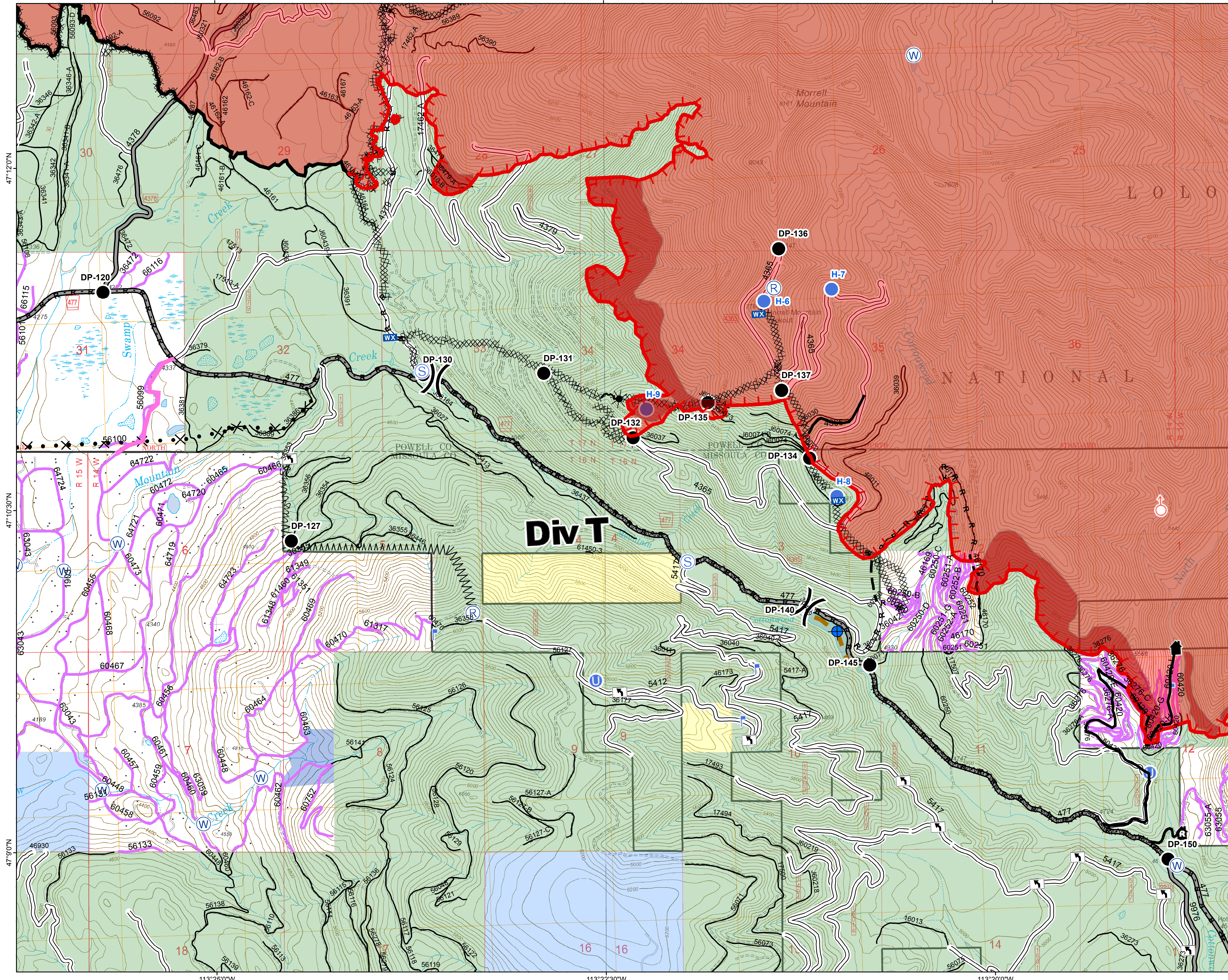
MT-LNF-001464

DIV T

Operations Map

August 30, 2017

32,222 Acres (IR Flight 8/30/17 0004)



- () Division Break
- (R) Repeater
- (D) Dip Site
- (●) Drop Point
- (L) Unimproved Landing Area
- (●) Helispot
- (T) Lookout
- (WX) Mobile Weather Unit
- (●) Spot Fire
- (S) Staging Area
- (W) Water Source
- (T) Turn Around Area
- (—) Completed Line
- (—) Uncontrolled Fire Edge
- (H-H) Completed Hand Line
- (R-R) Road as Completed Line
- (M) Line Break Completed
- (X) Completed Dozer Line
- (*) Explosive Line
- (X) Proposed Dozer Line
- (W) Fire Break Planned or Incomplete
- (—) Planned Fire Line
- (---) Highlighted Manmade Feature
- (—) Ridge/Geographic Feature
- (—) Other
- (—) Forest Service Undetermined
- (—) Other Road
- Forest Service System Roads
- 1 - BASIC(CLOSED); 2 - HIGH CLEARANCE
- 3 - PASSENGER CARS; 4 - MODERATE COMFORT; 5 - HIGH COMFORT
- Private Roads
- Other Forest Roads
- Fire Perimeter
- IR IntenseHeat
- County Government
- Montana State Trust Lands
- US Bureau of Land Management
- US Forest Service

