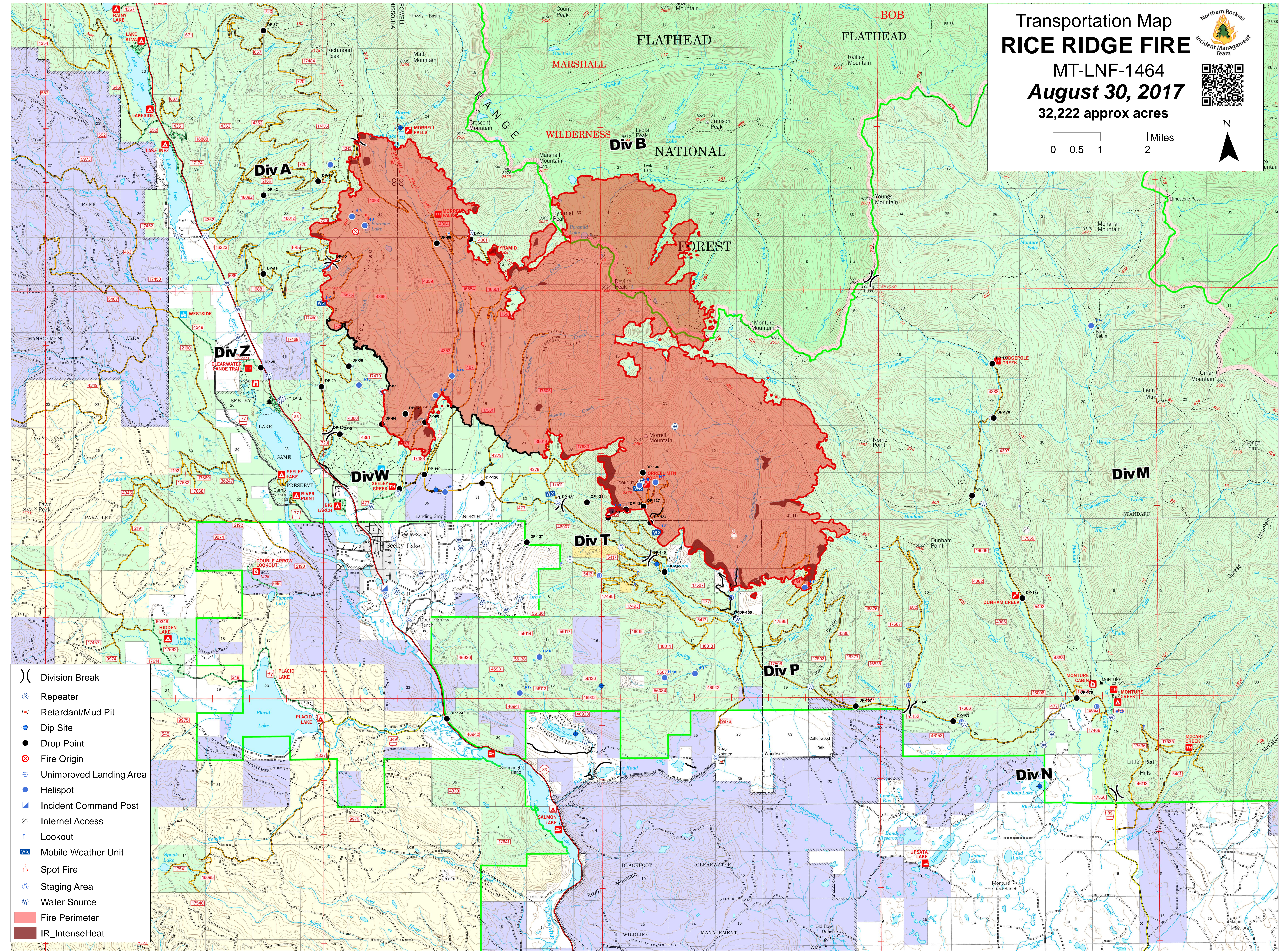
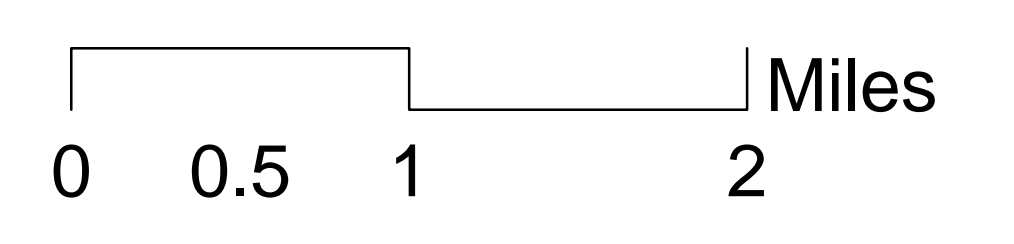


Transportation Map
RICE RIDGE FIRE
 MT-LNF-1464
August 30, 2017
 32,222 approx acres



- () Division Break
- (R) Repeater
- (W) Retardant/Mud Pit
- (H) Dip Site
- (●) Drop Point
- (⊗) Fire Origin
- (○) Unimproved Landing Area
- (●) Helispot
- (▲) Incident Command Post
- (⊕) Internet Access
- (○) Lookout
- (WX) Mobile Weather Unit
- (⊙) Spot Fire
- (○) Staging Area
- (W) Water Source
- (Red outline) Fire Perimeter
- (Dark red outline) IR_IntenseHeat