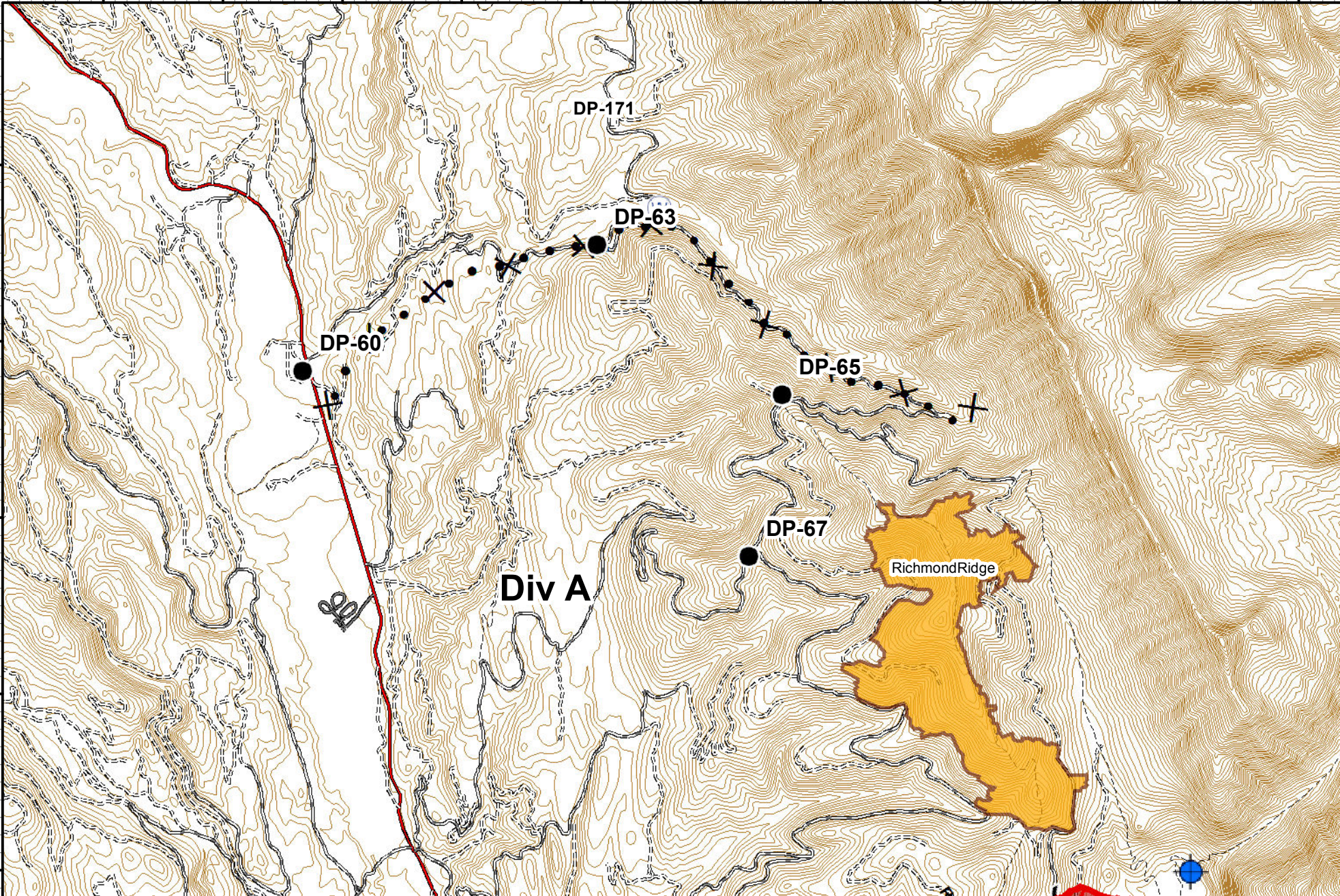


113°37'0"W 113°36'0"W 113°35'0"W 113°34'0"W 113°33'0"W 113°32'0"W 113°31'0"W 113°30'0"W 113°29'0"W 113°28'0"W 113°27'0"W

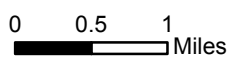
47°22'0"N
47°21'0"N
47°20'0"N
47°19'0"N
47°18'0"N

47°22'0"N
47°21'0"N
47°20'0"N
47°19'0"N
47°18'0"N

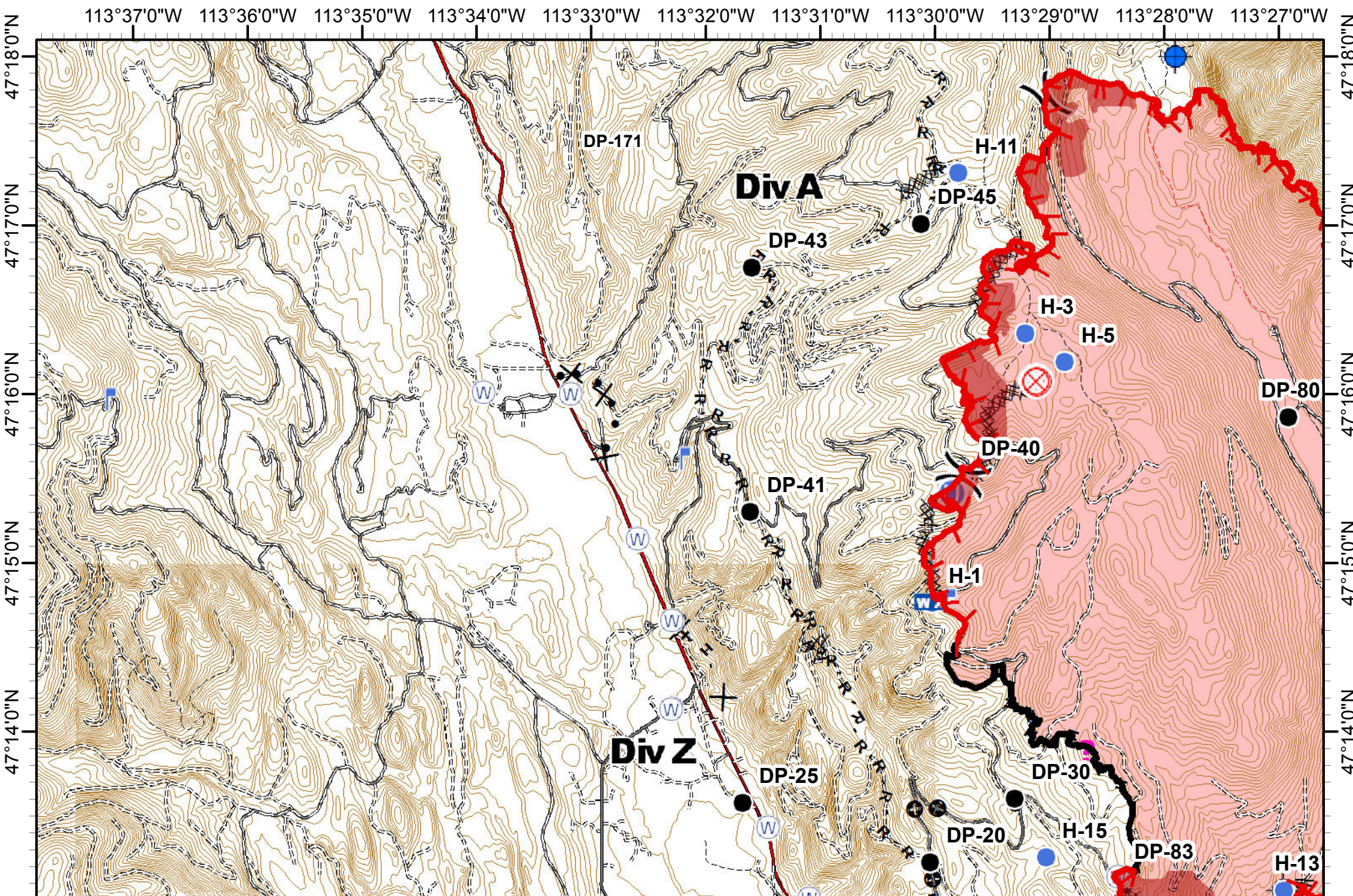


Rice Ridge Fire Incident Action Plan

MT-LNF-001464
08/30/2017
MAP 1
Approx Acres 30,661



Dip Site	Drop Point	Water Source	R - Road as Completed Line	Proposed Dozer Line	IR_IntenseHeat
					Wildfire Daily Fire Perimeter
					FireHistory

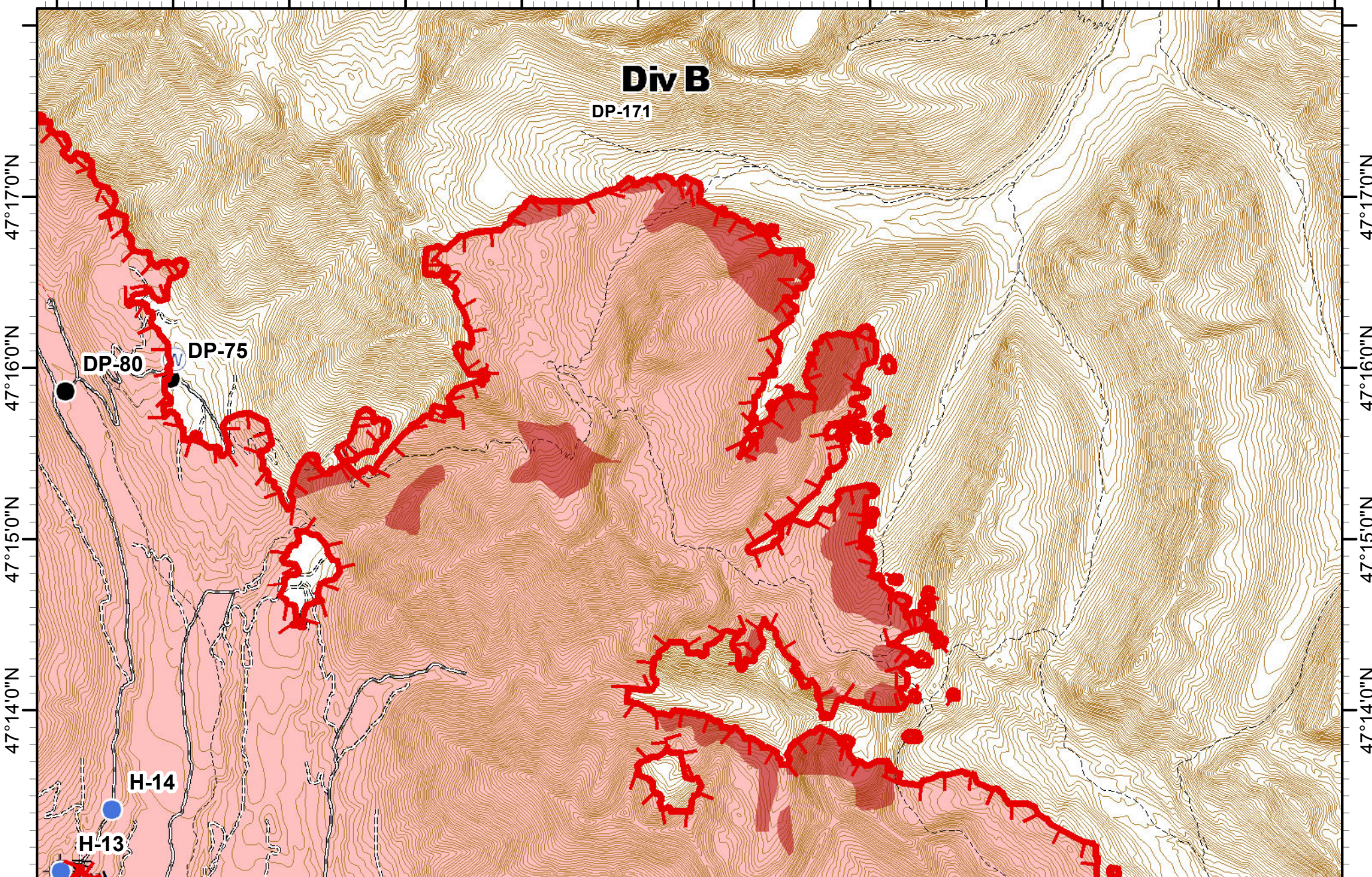


Rice Ridge Fire
Incident Action Plan
 MT-LNF-001464
 08/30/2017
 MAP 2
 Approx Acres 30,661

0 0.5 1 Miles



113°27'0"W 113°26'0"W 113°25'0"W 113°24'0"W 113°23'0"W 113°22'0"W 113°21'0"W 113°20'0"W 113°19'0"W 113°18'0"W 113°17'0"W 113°16'0"W



**Rice Ridge Fire
Incident Action Plan**

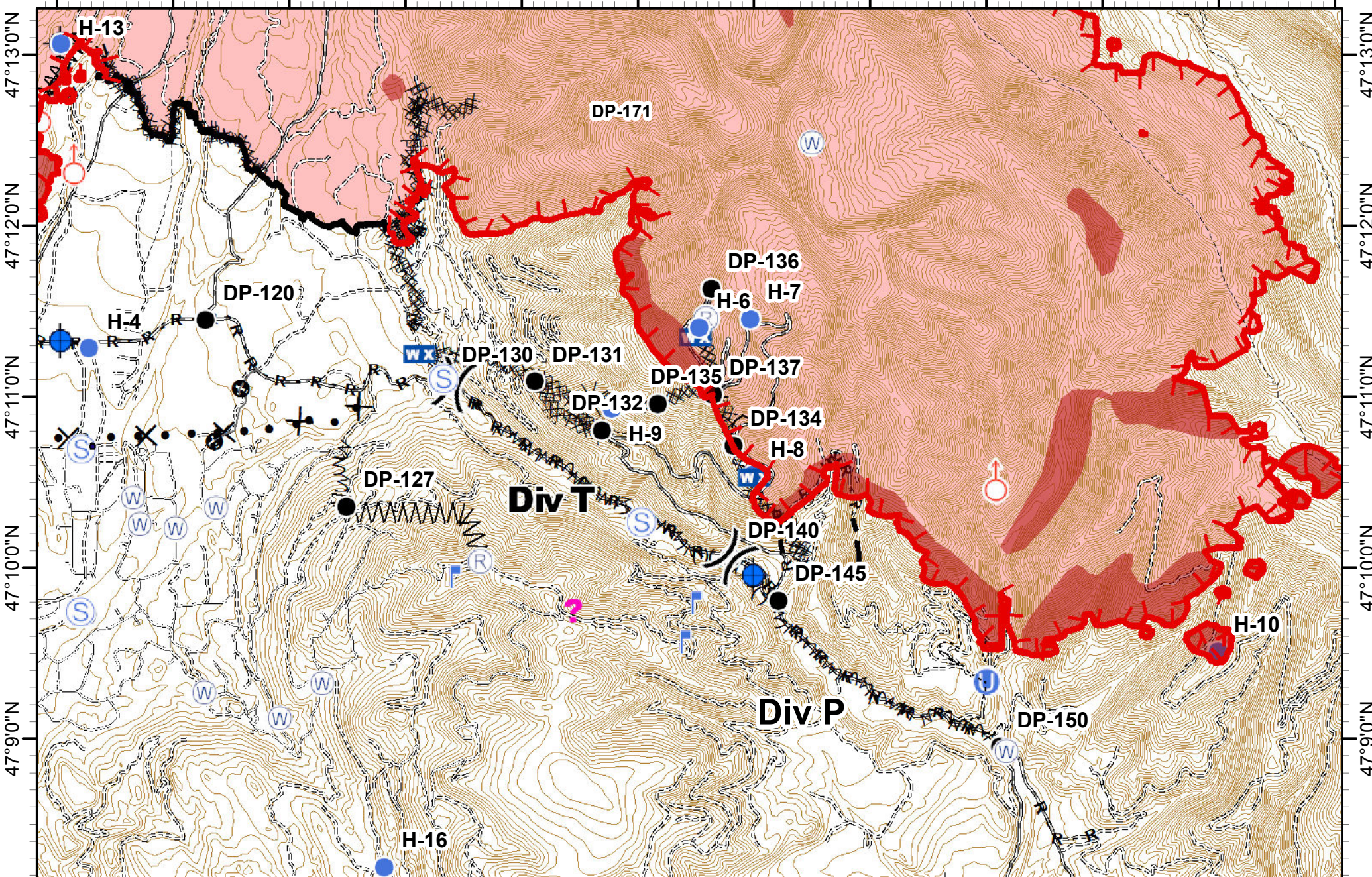


MT-LNF-001464
08/30/2017
Approx Acres 30,661
MAP 3

0 0.5 1 Miles



113°27'0"W 113°26'0"W 113°25'0"W 113°24'0"W 113°23'0"W 113°22'0"W 113°21'0"W 113°20'0"W 113°19'0"W 113°18'0"W 113°17'0"W 113°16'0"W



Rice Ridge Fire Incident Action Plan

MT-LNF-001464
08/30/2017
Approx Acres 30,661

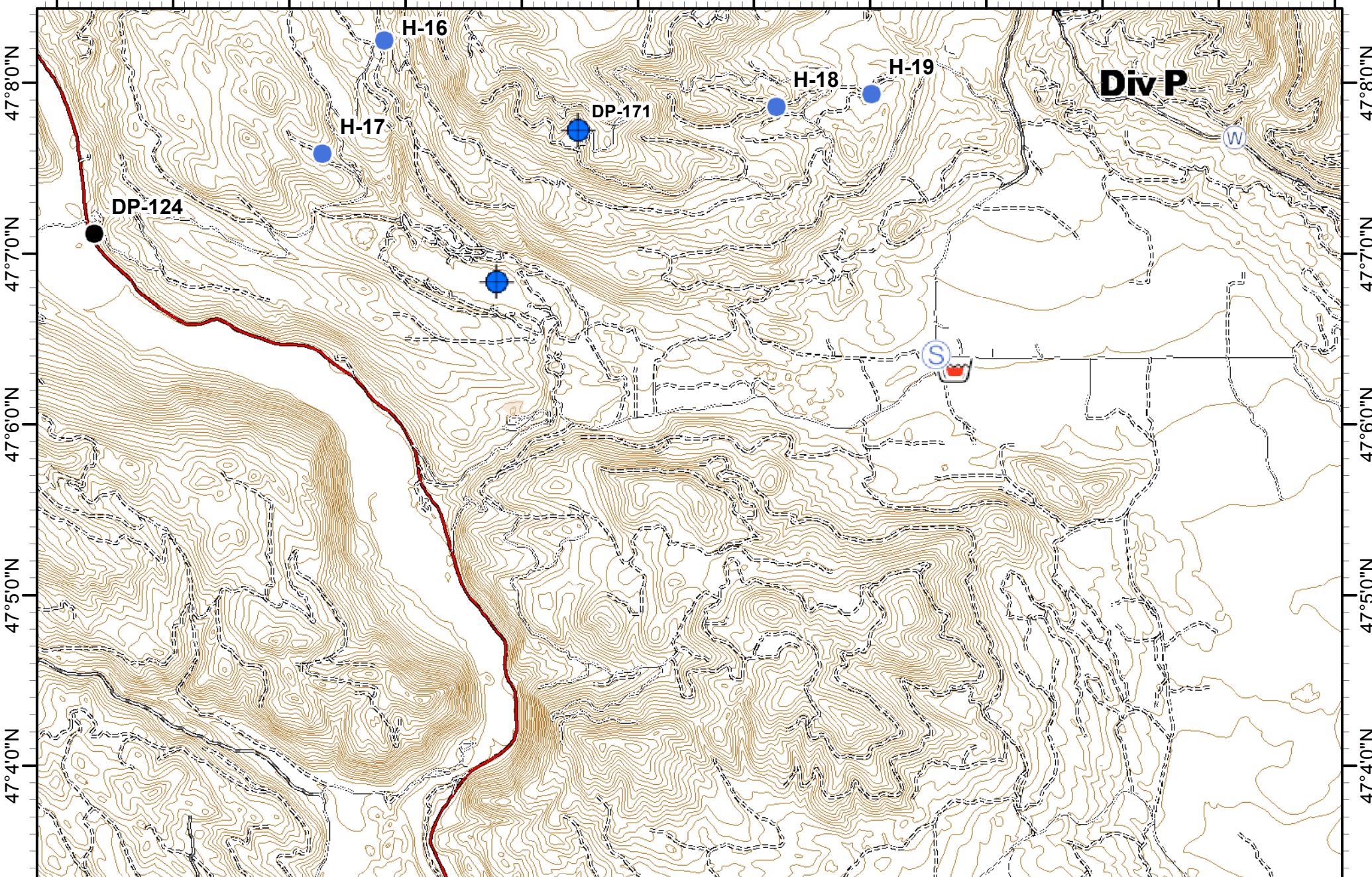
MAP 6

Northern Rockies
Incident Management Team

0 0.5 1 Miles

()	Division Break	●	Drop Point	WX	Mobile Weather Unit	W	Water Source	XXXXX	Completed Dozer Line		Line Break Completed	~~~~~	Fire Break Planned or Incomplete	()	Ridge/Geographic Feature
(R)	Repeater	U	Unimproved Landing Area	?	Other	H	Completed Hand Line	⊛	Explosive Line	—■—	Planned Fire Line	●- -	Highlighted Manmade Feature	+	Other
●	Dip Site	●	Helispot	♂	Spot Fire	R	Road as Completed Line	⊗	Proposed Dozer Line						
L	Lookout	S	Staging Area												IR_IntenseHeat
															Wildfire Daily Fire Perimeter

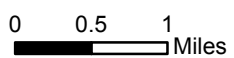
113°27'0"W 113°26'0"W 113°25'0"W 113°24'0"W 113°23'0"W 113°22'0"W 113°21'0"W 113°20'0"W 113°19'0"W 113°18'0"W 113°17'0"W 113°16'0"W



**Rice Ridge Fire
Incident Action Plan**

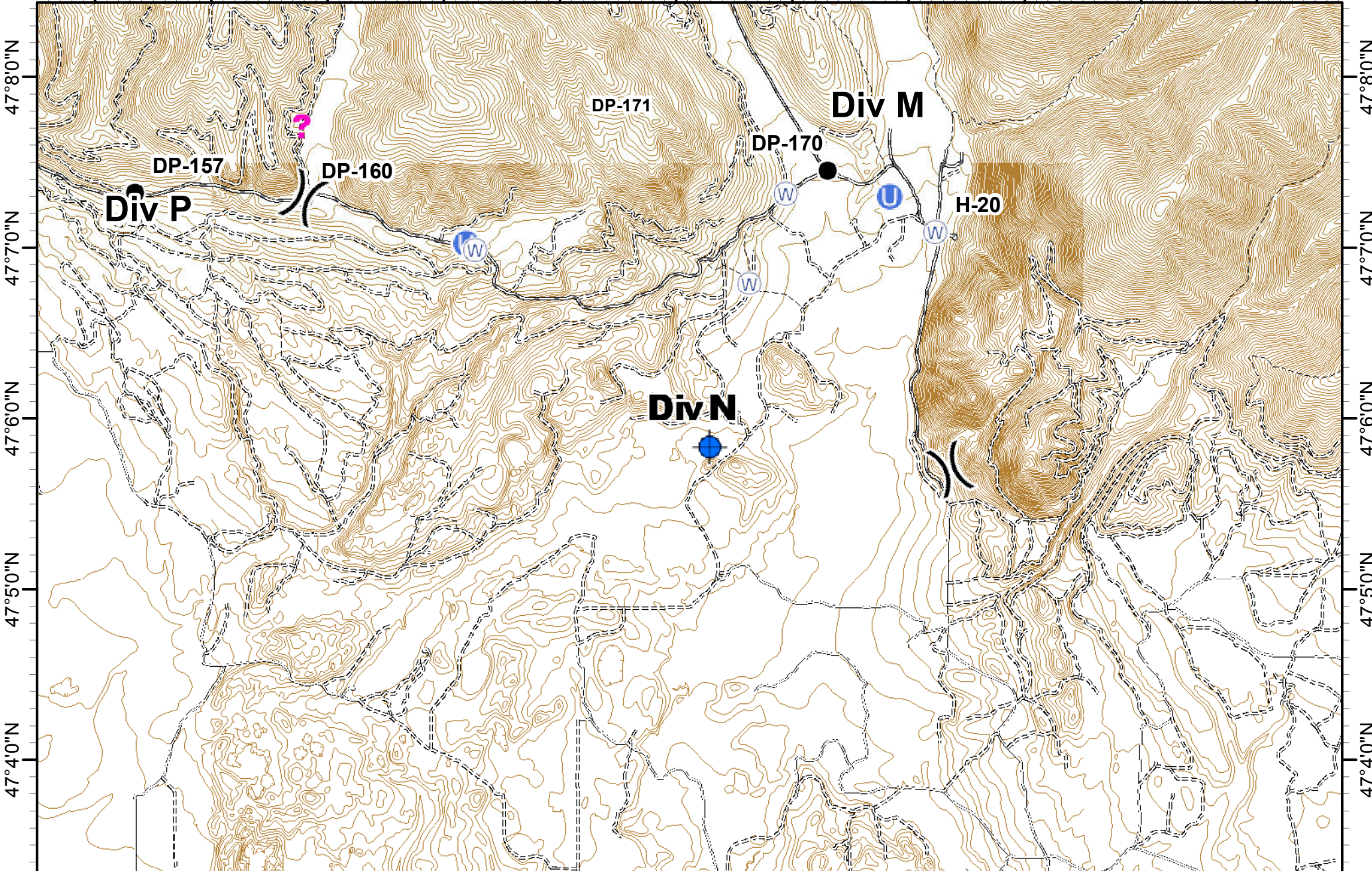


MT-LNF-001464 **MAP 8**
08/30/2017
Approx Acres 30,661



Retardant/Mud Pit	Dip Site	Drop Point	Staging Area	R - Road as Completed Line
	Hellspot	Water Source		

113°16'0"W 113°15'0"W 113°14'0"W 113°13'0"W 113°12'0"W 113°11'0"W 113°10'0"W 113°9'0"W 113°8'0"W 113°7'0"W 113°6'0"W



Rice Ridge Fire Incident Action Plan

MT-LNF-001464 **MAP 9**
 08/30/2017
 Approx Acres 30,661

0 0.5 1 Miles

()	Division Break		Dip Site		Unimproved Landing Area		Water Source
	Drop Point		Helispot		Other		