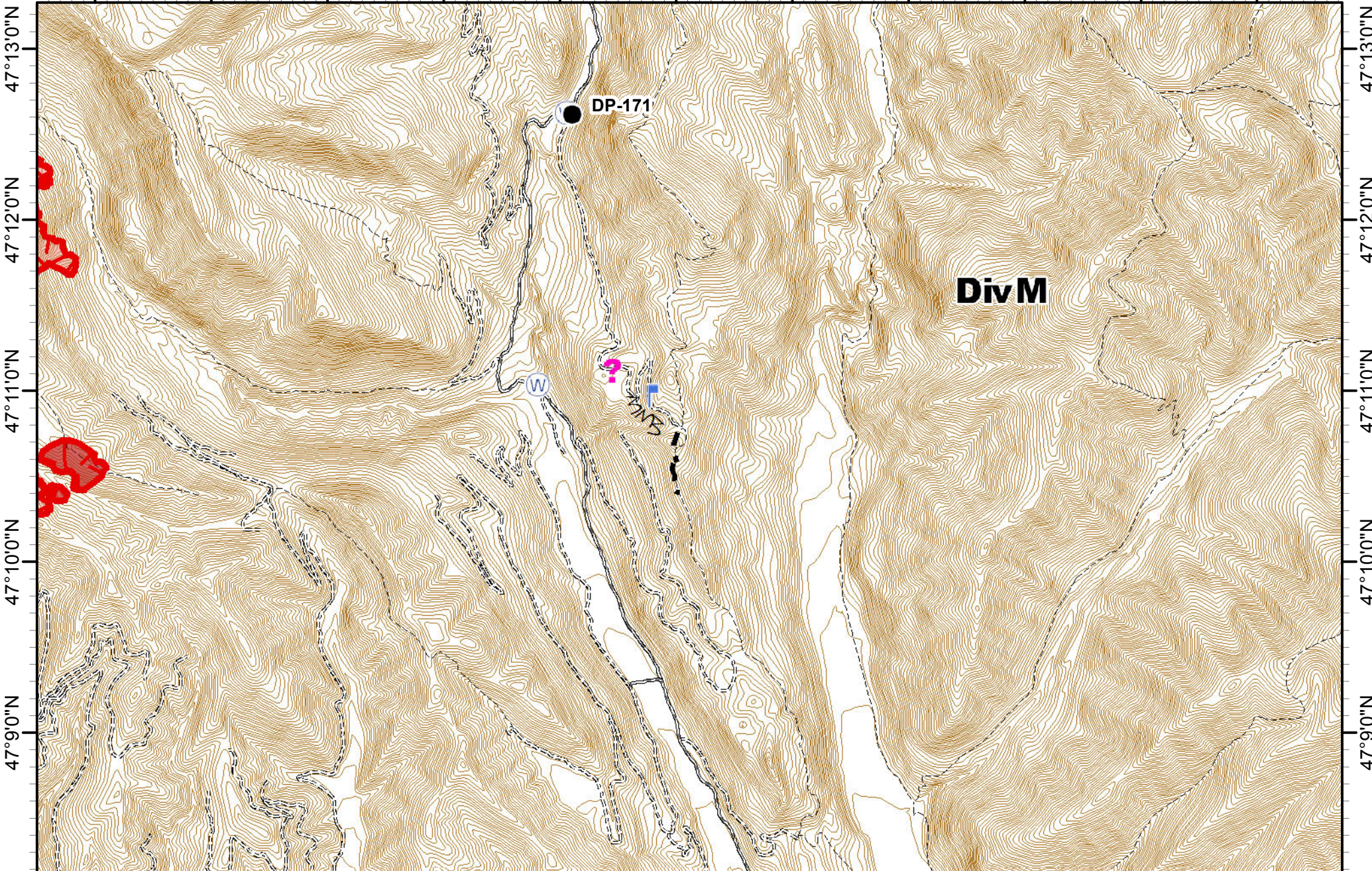


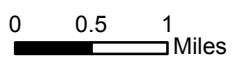
113°16'0"W 113°15'0"W 113°14'0"W 113°13'0"W 113°12'0"W 113°11'0"W 113°10'0"W 113°9'0"W 113°8'0"W 113°7'0"W 113°6'0"W



**Rice Ridge Fire**  
**Incident Action Plan**



MT-LNF-001464  
 08/30/2017  
**MAP 7**  
 Approx Acres 30,661



Drop Point	Lookout	Water Source	Other	Fire Break Planned or Incomplete	Planned Fire Line	IR_IntenseHeat
						Wildfire Daily Fire Perimeter