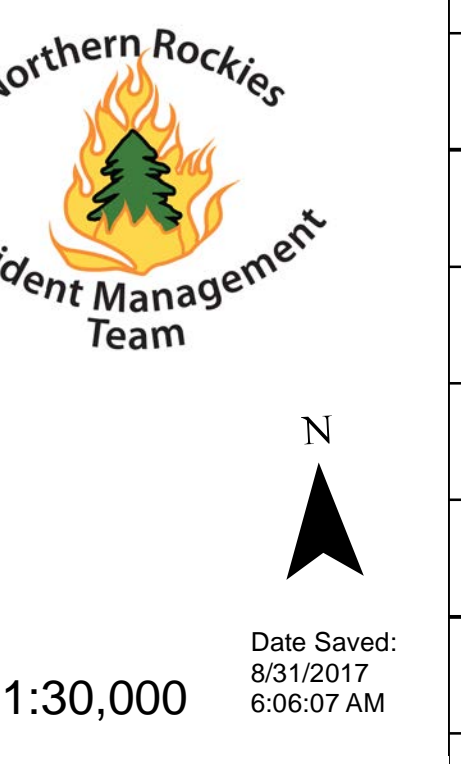


# Briefing Map

## RICE RIDGE FIRE

MT-LNF-001464  
**August 31, 2017**  
**33,365 Acres (IR Flight 8/30/17 @2148)**



- |      |                       |   |                                  |
|------|-----------------------|---|----------------------------------|
| ( )  | Division Break        | — | Completed Line                   |
| (R)  | Repeater              | — | Uncontrolled Fire Edge           |
| (M)  | Retardant/Mud Pit     | — | Completed Hand Line              |
| (●)  | Drop Point            | — | R-R-R Road as Completed Line     |
| (X)  | Fire Origin           | — | MMMM Line Break Completed        |
| (*)  | Helispot              | — | Completed Dozer Line             |
| (I)  | Incident Command Post | — | Explosive Line                   |
| (L)  | Lookout               | — | Proposed Dozer Line              |
| (WX) | Mobile Weather Unit   | — | Fire Break Planned or Incomplete |
| (S)  | Staging Area          | — | Highlighted Manmade Feature      |
| (W)  | Water Source          | — | (XXXX) Ridge/Geographic Feature  |

