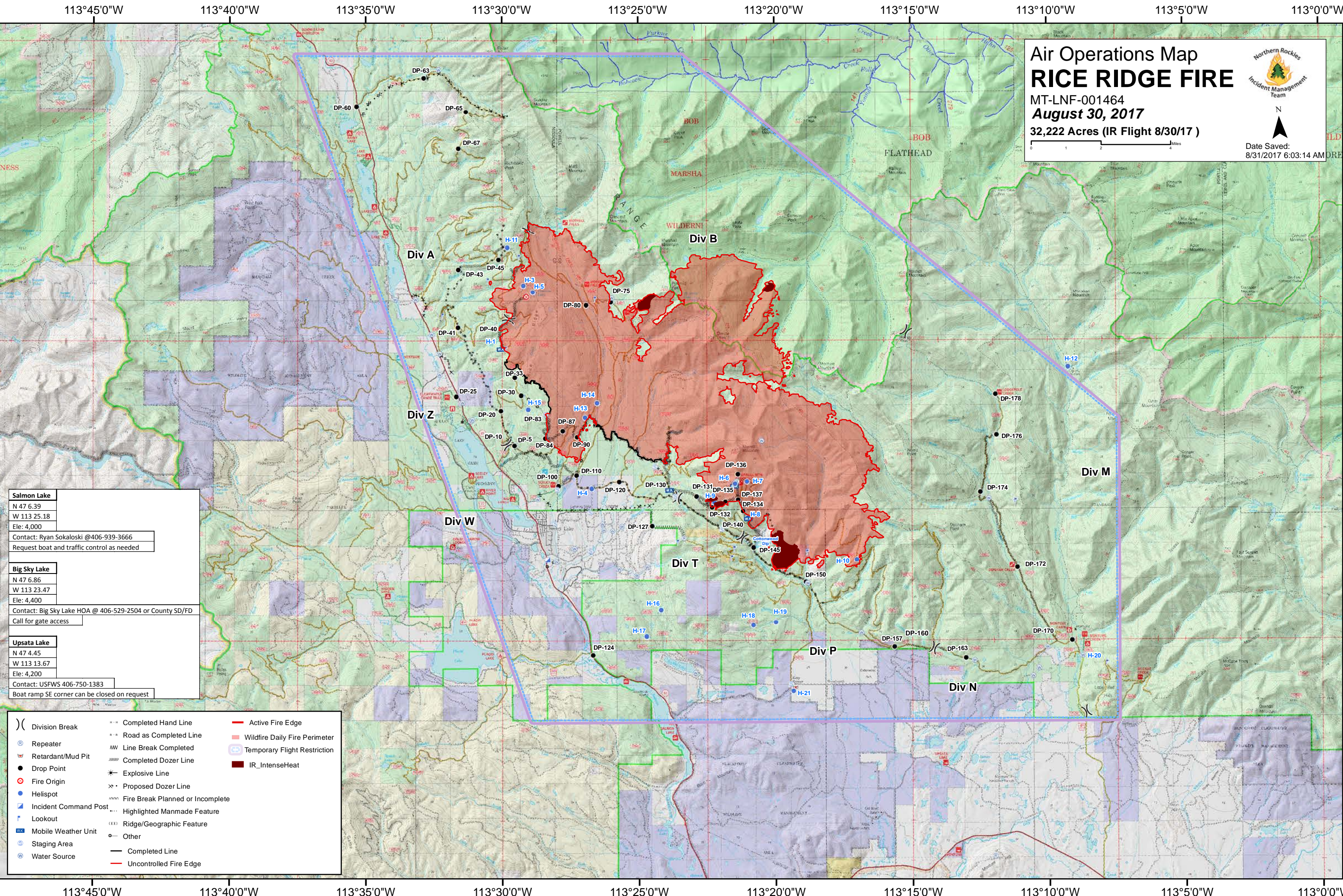


# Air Operations Map RICE RIDGE FIRE

MT-LNF-001464  
August 30, 2017  
32,222 Acres (IR Flight 8/30/17)



Date Saved:  
8/31/2017 6:03:14 AM DRE



**Salmon Lake**  
N 47 6.39  
W 113 25.18  
Ele: 4,000  
Contact: Ryan Sokaloski @406-939-3666  
Request boat and traffic control as needed

**Big Sky Lake**  
N 47 6.86  
W 113 23.47  
Ele: 4,400  
Contact: Big Sky Lake HOA @ 406-529-2504 or County SD/FD  
Call for gate access

**Upsata Lake**  
N 47 4.45  
W 113 13.67  
Ele: 4,200  
Contact: USFWS 406-750-1383  
Boat ramp SE corner can be closed on request

⌋	Division Break	—•—•—	Completed Hand Line	—	Active Fire Edge
Ⓡ	Repeater	—•—•—	Road as Completed Line	—	Wildfire Daily Fire Perimeter
Ⓜ	Retardant/Mud Pit	—•—•—	Line Break Completed	Ⓜ	Temporary Flight Restriction
●	Drop Point	—•—•—	Completed Dozer Line	■	IR_IntenseHeat
⊙	Fire Origin	✱	Explosive Line		
Ⓜ	Helispot	✱	Proposed Dozer Line		
Ⓜ	Incident Command Post	⋯	Fire Break Planned or Incomplete		
Ⓜ	Lookout	⋯	Highlighted Manmade Feature		
Ⓜ	Mobile Weather Unit	Ⓜ	Ridge/Geographic Feature		
Ⓜ	Staging Area	○	Other		
Ⓜ	Water Source	—	Completed Line		
		—	Uncontrolled Fire Edge		