

Rice Ridge Fire

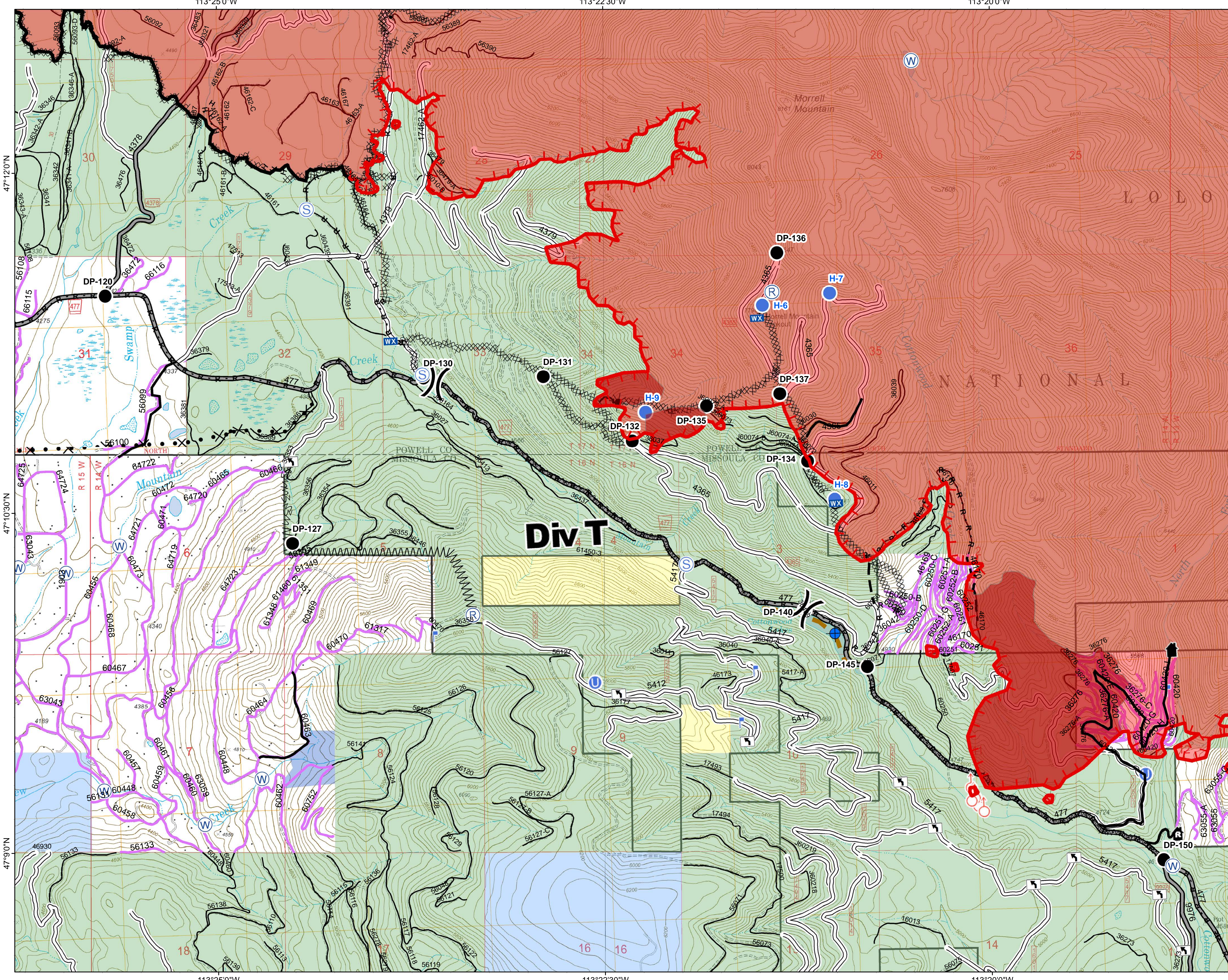
MT-LNF-001464

DIV T

Operations Map

August 31, 2017

33,365 Acres (IR Flight 8/30/17 @2148)



- () Division Break
- (R) Repeater
- (D) Dip Site
- (●) Drop Point
- (S) Unimproved Landing Area
- (H) Helispot
- (L) Lookout
- (WX) Mobile Weather Unit
- (●) Spot Fire
- (S) Staging Area
- (W) Water Source
- (T) Turn Around Area
- (—) Completed Line
- (—) Uncontrolled Fire Edge
- (H · H ·) Completed Hand Line
- (R · R ·) Road as Completed Line
- (M/M) Line Break Completed
- (X/X/X/X) Completed Dozer Line
- (X · X ·) Explosive Line
- (X · · ·) Proposed Dozer Line
- (M/M/M/M) Fire Break Planned or Incomplete
- (—) Planned Fire Line
- (· · · ·) Highlighted Manmade Feature
- (—) Ridge/Geographic Feature
- (—) Forest Service Undetermined
- (—) Other Road
- Forest Service System Roads**
 - 1 - BASIC(CLOSED); 2 - HIGH CLEARANCE
 - 3 - PASSENGER CARS; 4 - MODERATE COMFORT; 5 - HIGH COMFORT
- (—) Private Roads
- (—) Plum Creek Roads
- (—) Other Forest Roads
- (—) Fire Perimeter
- (—) IR_IntenseHeat
- (—) County Government
- (—) Montana State Trust Lands
- (—) US Bureau of Land Management
- (—) US Forest Service

Northern Rockies
Incident Management
Team

