

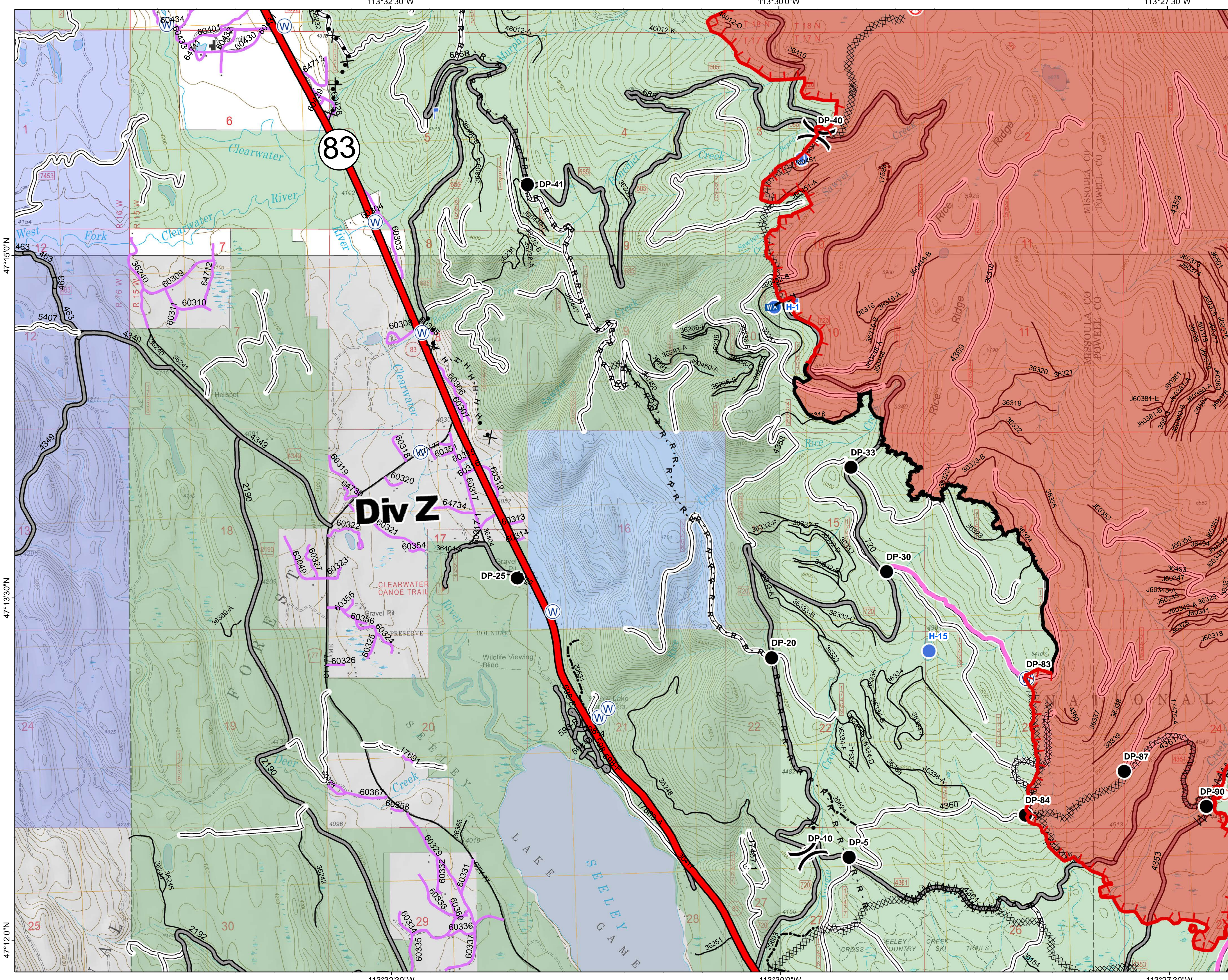
Rice Ridge Fire

MT-LNF-001464

DIV Z Operations Map

August 31, 2017

33,365 Acres (IR Flight 8/30/17 @2148)



- () Division Break
- Drop Point
- ⊙ Fire Origin
- ⊕ Unimproved Landing Area
- ⊙ Helispot
- ⌂ Lookout
- Ⓜ Mobile Weather Unit
- ⊙ Spot Fire
- Ⓜ Water Source
- Completed Line
- Uncontrolled Fire Edge
- H · H · Completed Hand Line
- R · R · Road as Completed Line
- Line Break Completed
- ⊗ Completed Dozer Line
- ⊗ Proposed Dozer Line
- ⊗ Fire Break Planned or Incomplete
- Other
- Forest Service Undetermined
- Other Road
- Interstate and Highways
- Forest Service System Roads**
- 1 - BASIC(CLOSED); 2 - HIGH CLEARANCE
- 3 - PASSENGER CARS; 4 - MODERATE COMFORT; 5 - HIGH COMFORT
- Private Roads
- County
- Plum Creek Roads
- Short Term Spec Roads
- Fire Perimeter
- Montana Fish, Wildlife, and Parks
- Montana State Trust Lands
- US Forest Service

Northern Rockies
Incident Management
Team

0 0.25 0.5 1 Miles