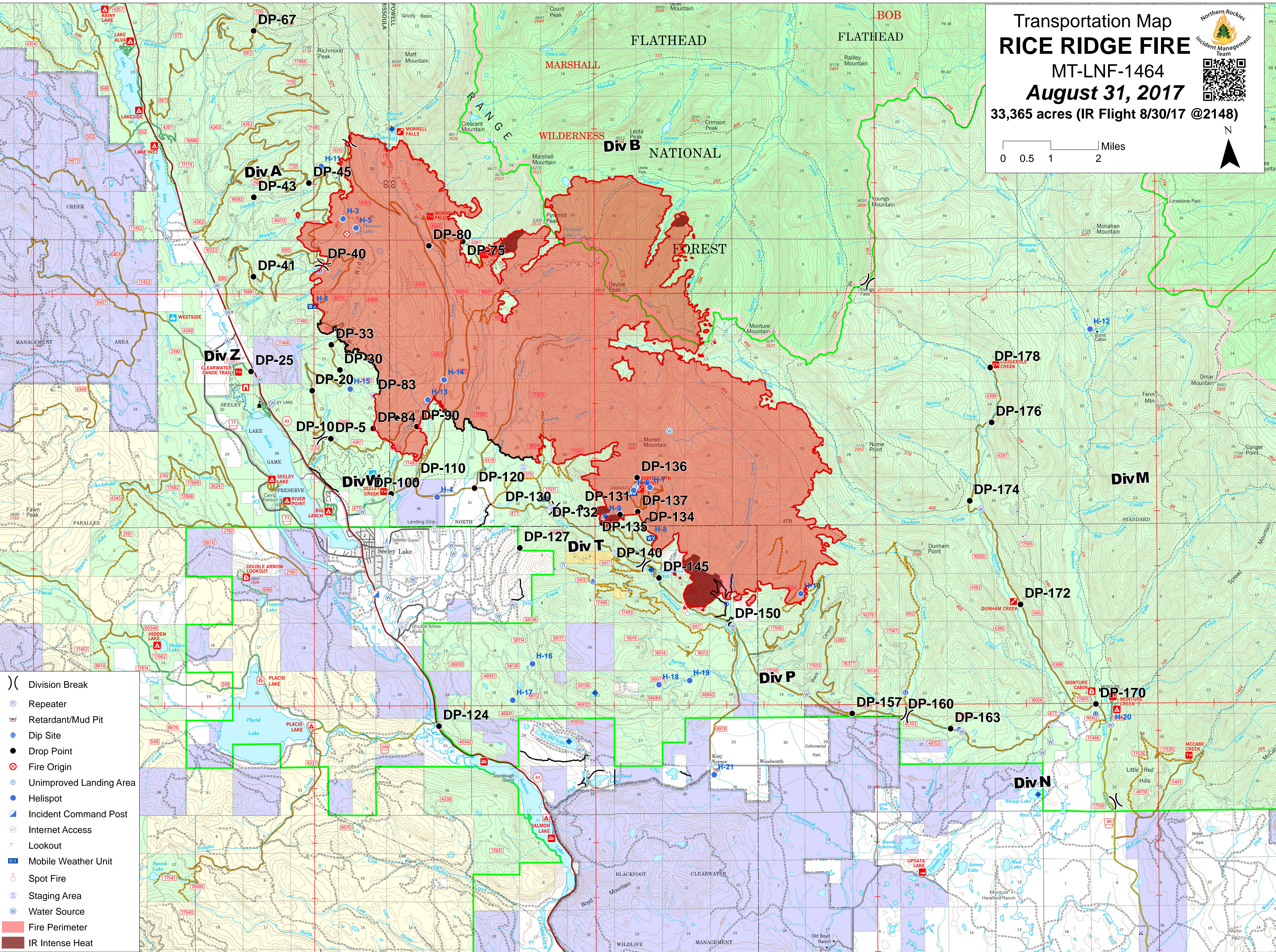
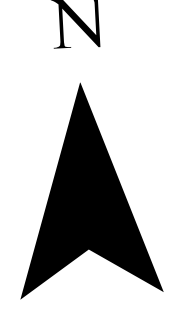
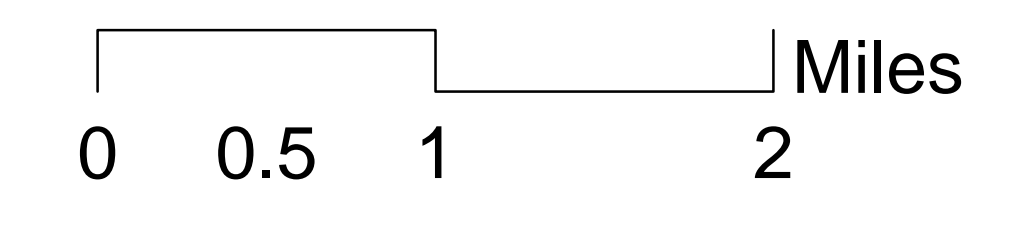


Transportation Map  
**RICE RIDGE FIRE**  
 MT-LNF-1464  
**August 31, 2017**  
 33,365 acres (IR Flight 8/30/17 @2148)



- ( ) Division Break
- (R) Repeater
- (M) Retardant/Mud Pit
- (H) Dip Site
- (●) Drop Point
- (X) Fire Origin
- (U) Unimproved Landing Area
- (●) Helispot
- (I) Incident Command Post
- (W) Internet Access
- (L) Lookout
- (WX) Mobile Weather Unit
- (S) Spot Fire
- (S) Staging Area
- (W) Water Source
- (Red outline) Fire Perimeter
- (Dark red) IR Intense Heat