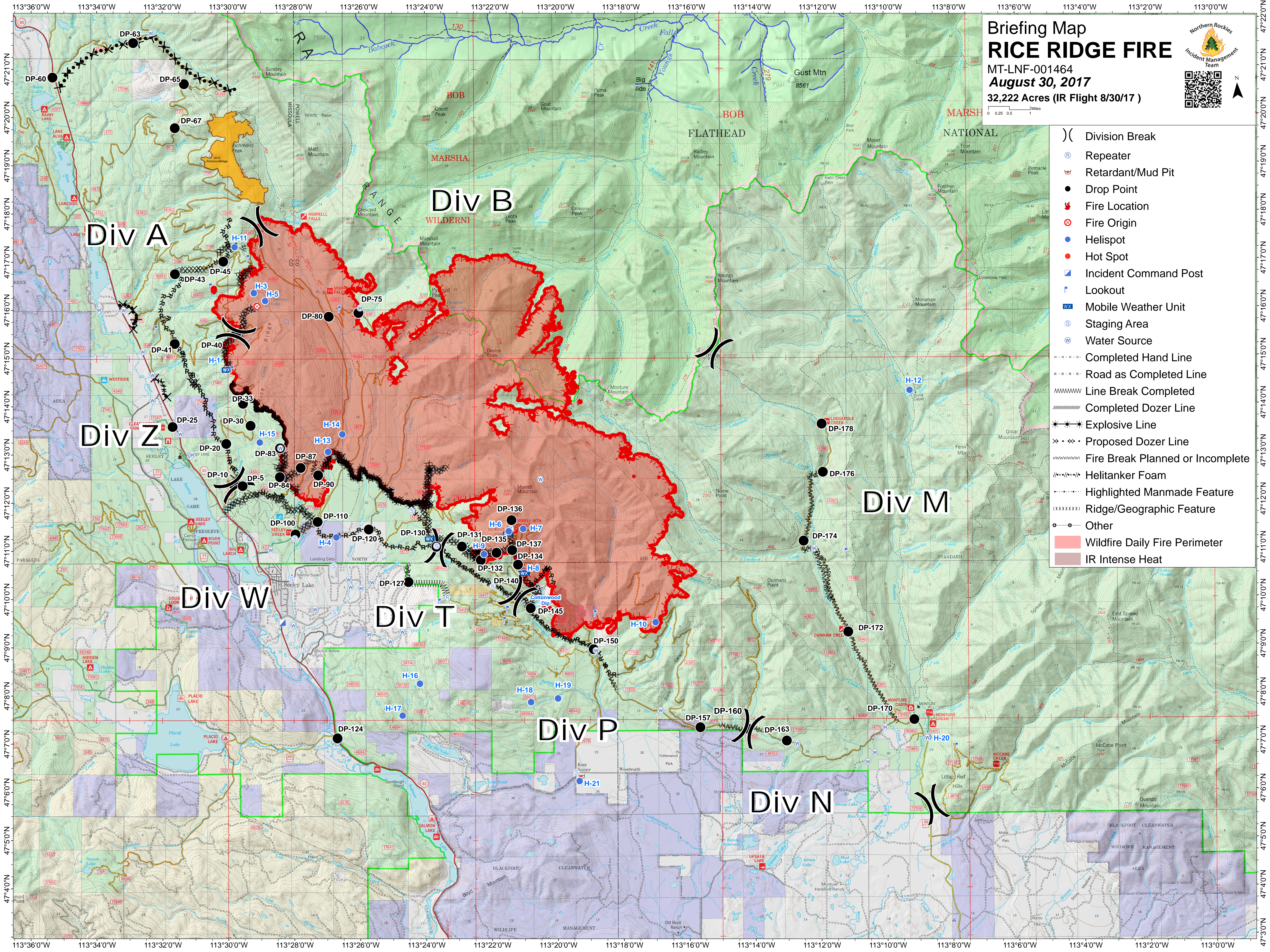


Briefing Map RICE RIDGE FIRE

MT-LNF-001464
August 30, 2017
32,222 Acres (IR Flight 8/30/17)



- () Division Break
- Ⓡ Repeater
- ☒ Retardant/Mud Pit
- Drop Point
- 🔥 Fire Location
- ⊗ Fire Origin
- Helispot
- Hot Spot
- 📍 Incident Command Post
- 🔍 Lookout
- 📶 Mobile Weather Unit
- Ⓢ Staging Area
- 🌊 Water Source
- Completed Hand Line
- - - - - Road as Completed Line
- ~~~~~ Line Break Completed
- ⊘⊘⊘ Completed Dozer Line
- * * * Explosive Line
- × × × Proposed Dozer Line
- ~~~~~ Fire Break Planned or Incomplete
- ⊘⊘⊘ Helitanker Foam
- ⋯ Highlighted Manmade Feature
- ⊘⊘⊘ Ridge/Geographic Feature
- Other
- 🔴 Wildfire Daily Fire Perimeter
- 🟤 IR Intense Heat