

Rice Ridge Fire

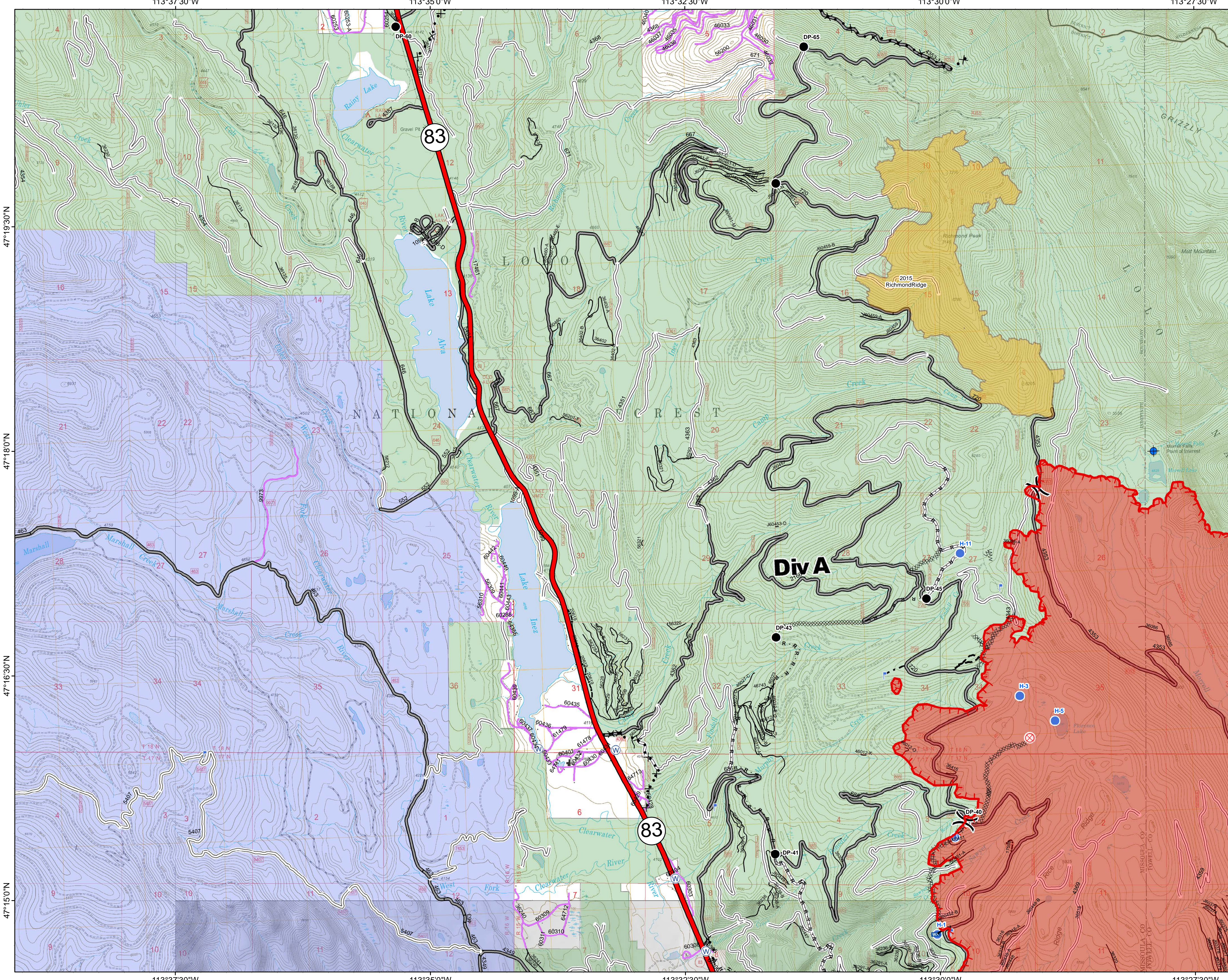
MT-LNF-001464

DIV A

Operations Map

August 31, 2017

33,365 Acres (IR Flight 8/30/17 @2148)



- () Division Break
- Dip Site
- Drop Point
- Fire Origin
- Unimproved Landing Area
- Helispot
- ⌘ Lookout
- ⊞ Mobile Weather Unit
- ⊞ Water Source
- Completed Line
- Uncontrolled Fire Edge
- - - Completed Plow Line
- H · H · Completed Hand Line
- R · R · Road as Completed Line
- XXXXX Completed Dozer Line
- X · X · Proposed Dozer Line
- ~~~~~ Fire Break Planned or Incomplete
- - - Planned Fire Line
- Forest Service Undetermined
- Other Road
- Interstate and Highways
- Forest Service System Roads**
- 1 - BASIC(CLOSED); 2 - HIGH CLEARANCE
- 3 - PASSENGER CARS; 4 - MODERATE COMFORT; 5 - HIGH COMFORT
- Private Roads
- County
- Plum Creek Roads
- Short Term Spec Roads
- Fire Perimeter
- Fire History
- Montana Fish, Wildlife, and Parks
- US Forest Service

Northern Rockies
Incident Management
Team

0 0.375 0.75 1.5 Miles