

Rice Ridge Fire

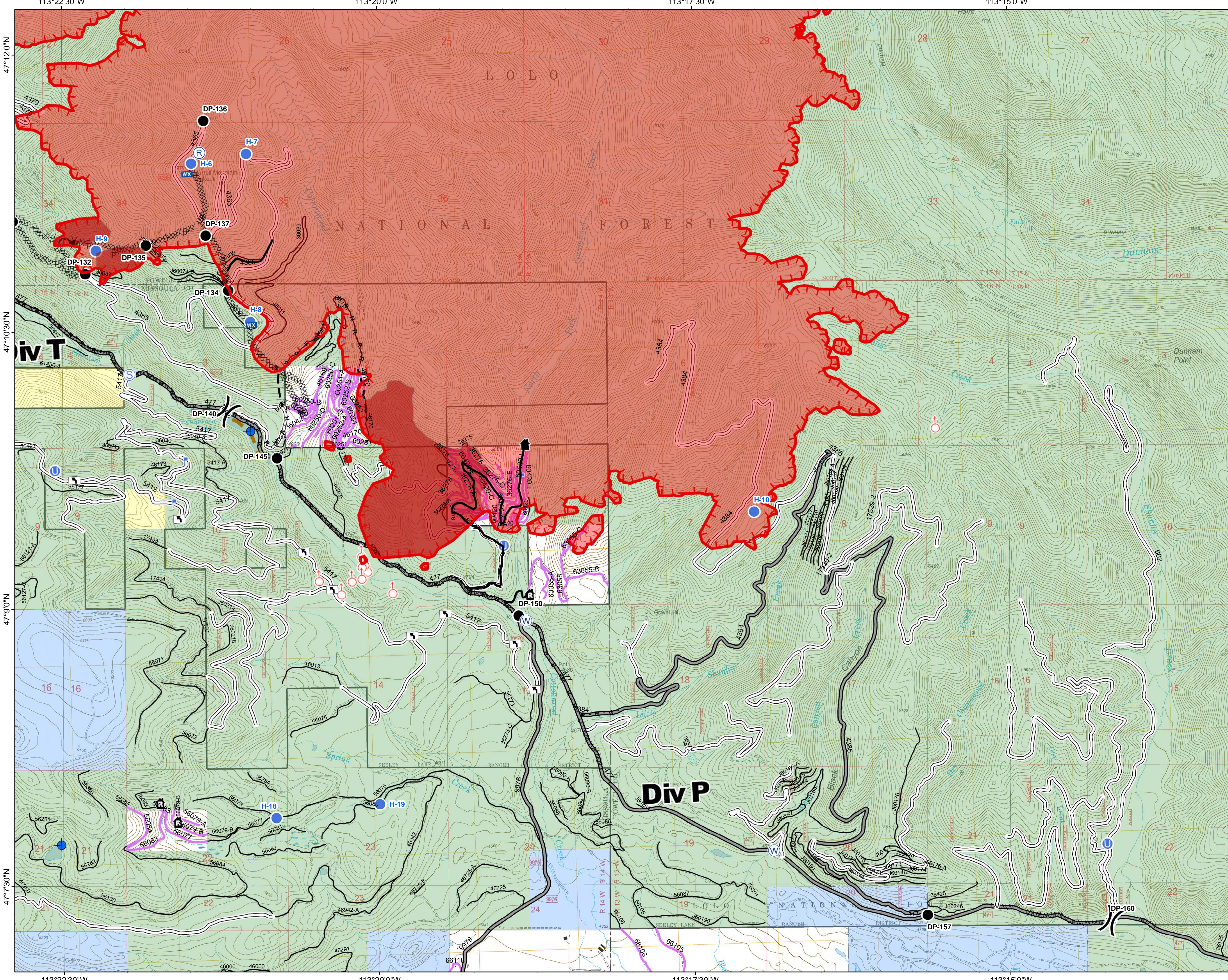
MT-LNF-001464

DIV P

Operations Map



August 31, 2017

33,365 Acres (IR Flight 8/30/17 @2148)



- () Division Break
- (R) Repeater
- (D) Dip Site
- (●) Drop Point
- (U) Unimproved Landing Area
- (H) Helispot
- (L) Lookout
- (WX) Mobile Weather Unit
- (S) Spot Fire
- (S) Staging Area
- (W) Water Source
- (T) Turn Around Area
- (---) Uncontrolled Fire Edge
- (H · H ·) Completed Hand Line
- (R · R ·) Road as Completed Line
- (---) Completed Dozer Line
- (*) Explosive Line
- (---) Fire Break Planned or Incomplete
- (---) Planned Fire Line
- (---) Ridge/Geographic Feature
- (---) Forest Service Undetermined
- (---) Other Road
- Forest Service System Roads**
 - 1 - BASIC(CLOSED); 2 - HIGH CLEARANCE
 - 3 - PASSENGER CARS; 4 - MODERATE COMFORT; 5 - HIGH COMFORT
- (---) Private Roads
- (---) Fire Perimeter
- (---) IR Intense Heat
- (---) Montana State Trust Lands
- (---) US Bureau of Land Management
- (---) US Forest Service

Northern Rockies
Incident Management
Team



0 0.3 0.6 1.2 Miles