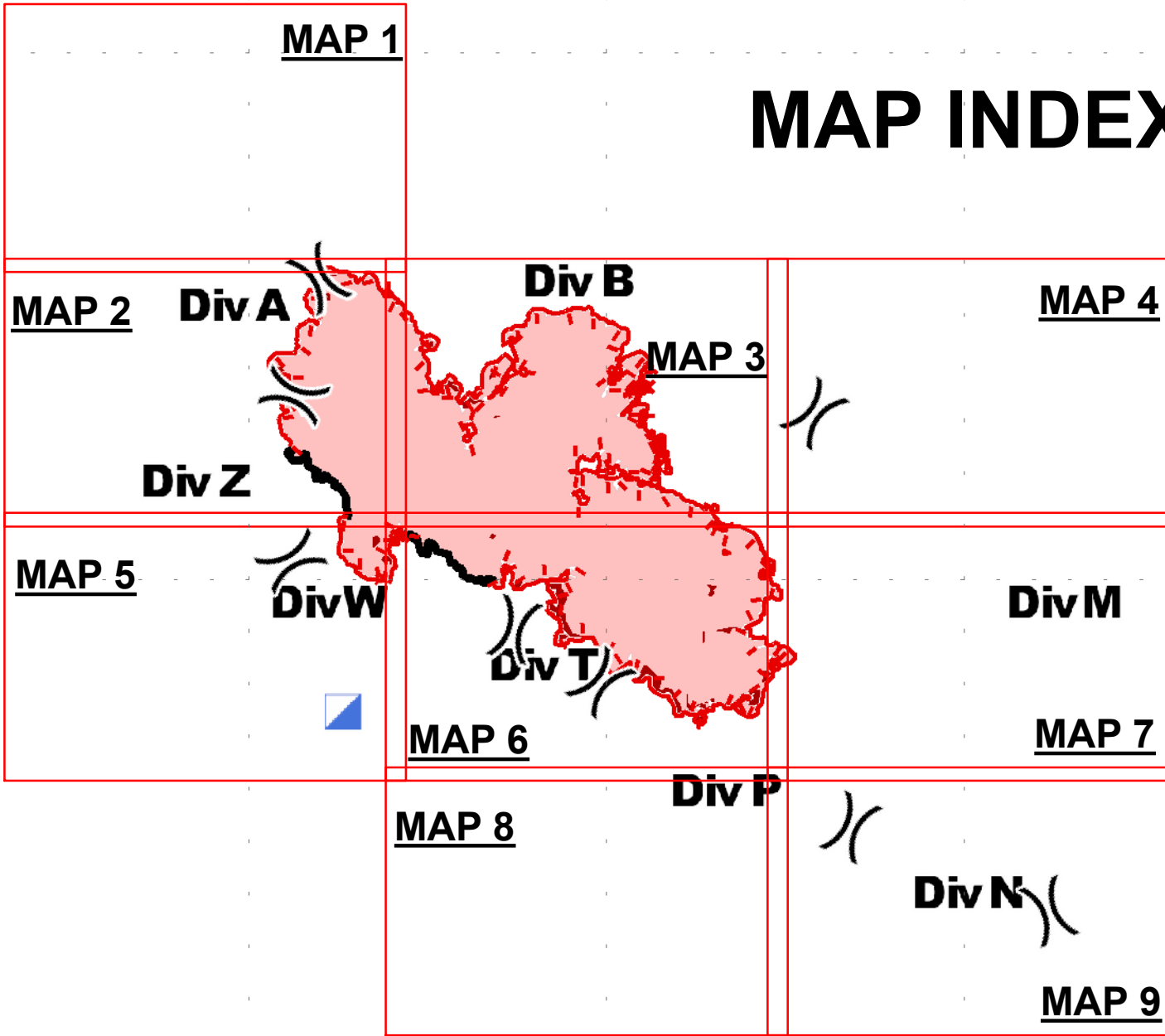


113°37'0"W 113°32'0"W 113°27'0"W 113°22'0"W 113°17'0"W 113°12'0"W 113°8'0"W 113°4'0"W 113°0'0"W 112°56'0"W

47°23'0"N
47°20'0"N
47°17'0"N
47°14'0"N
47°11'0"N
47°8'0"N
47°5'0"N

47°22'0"N
47°19'0"N
47°16'0"N
47°13'0"N
47°10'0"N
47°7'0"N
47°4'0"N

MAP INDEX



Rice Ridge Fire Incident Action Plan

MT-LNF-001464
08/31/2017
Approx Acres 32,222

0 2 4 Miles



	Division Break		Wildfire Daily Fire Perimeter
	Incident Command Post		IR_IntenseHeat