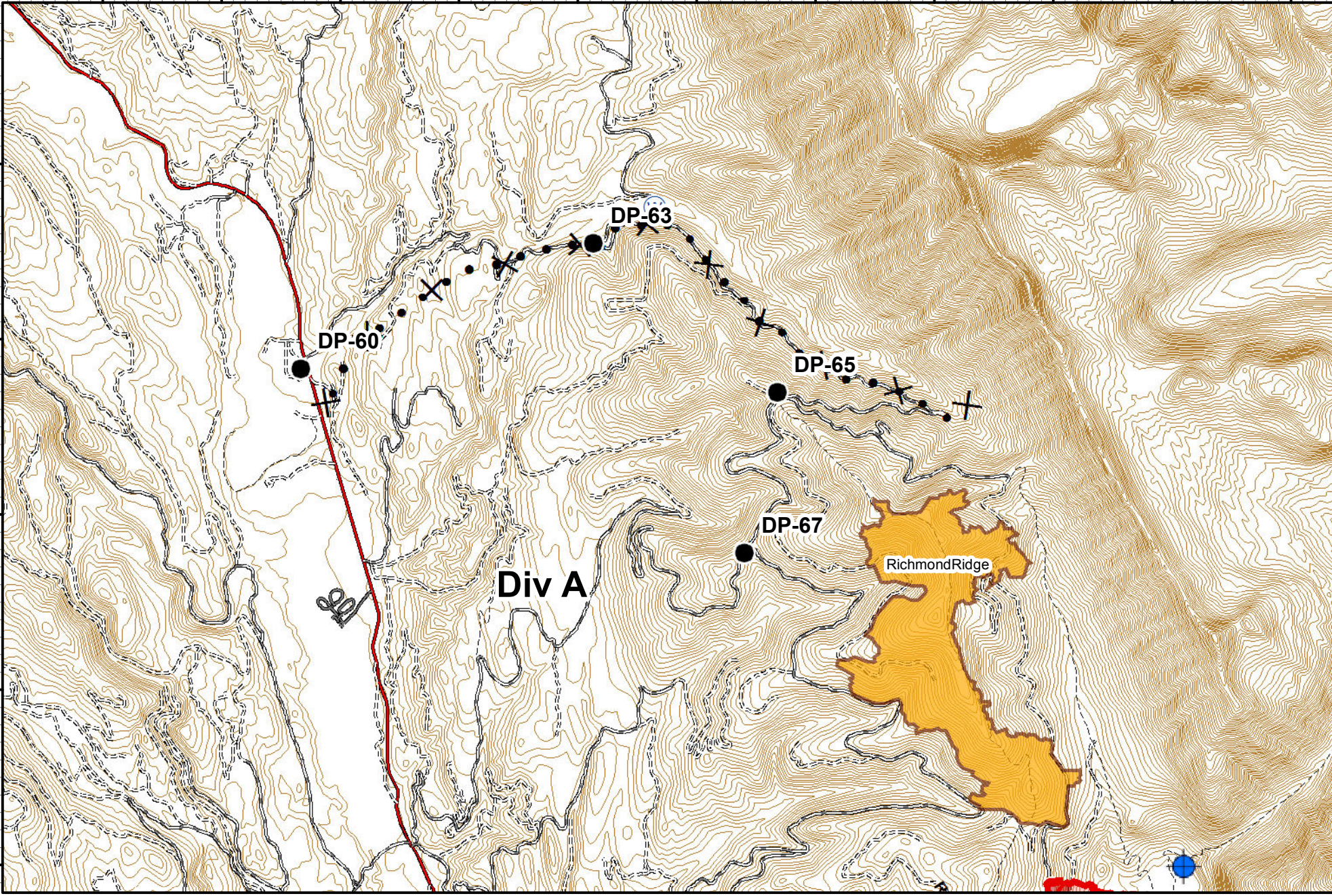


113°37'0"W 113°36'0"W 113°35'0"W 113°34'0"W 113°33'0"W 113°32'0"W 113°31'0"W 113°30'0"W 113°29'0"W 113°28'0"W 113°27'0"W

47°22'0"N
47°21'0"N
47°20'0"N
47°19'0"N
47°18'0"N

47°22'0"N
47°21'0"N
47°20'0"N
47°19'0"N
47°18'0"N



Rice Ridge Fire Incident Action Plan

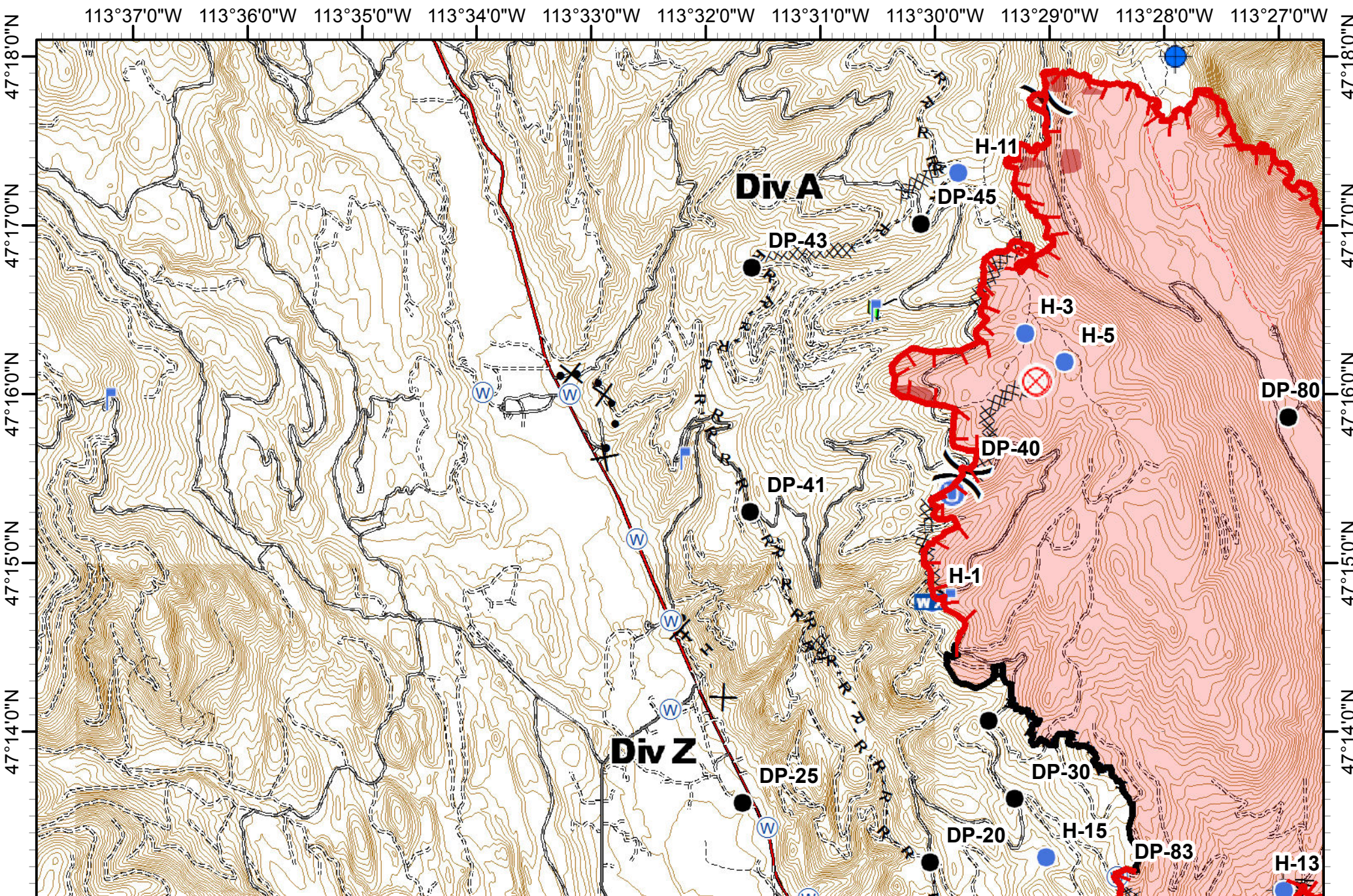
MT-LNF-001464
08/31/2017
Approx Acres 32,222

MAP 1

0 0.5 1 Miles

- Dip Site
- Drop Point
- Water Source
- IR_Intens...
- Wildfire Daily Fire Perimeter
- Uncontrolled Fire Edge
- Proposed Dozer Line
- SuppData_FireE...
- Feature Category (Line Type)
- Road as Completed Line
- Division Break

113°37'0"W 113°36'0"W 113°35'0"W 113°34'0"W 113°33'0"W 113°32'0"W 113°31'0"W 113°30'0"W 113°29'0"W 113°28'0"W 113°27'0"W



Rice Ridge Fire Incident Action Plan

MT-LNF-001464 MAP 2
08/31/2017
Approx Acres 32,222

0 0.5 1 Miles

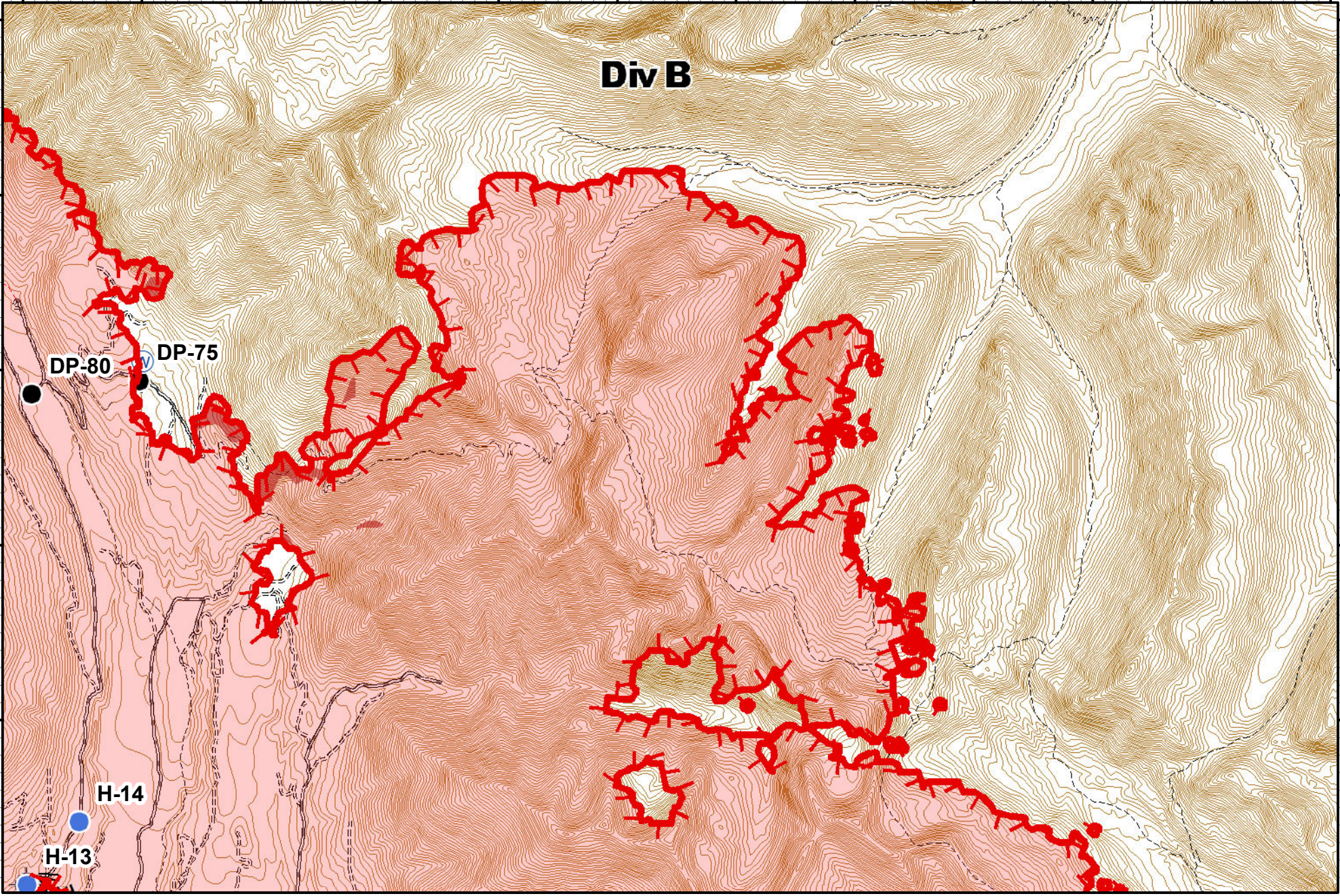
Dip Site	Fire Origin	Helispot	Mobile Weather Unit	Completed Dozer Line	Line Break Completed	SuppData_FireE...	IR_Intens...
Drop Point	Unimproved Landing Area	Water Source	Division Break	Completed Hand Line	Completed Plow Line	Feature Category (Line Type)	Wildfire Daily Fire Perimeter
Lookout	Water Source	Proposed Dozer Line	Road as Completed Line	Completed Line	Uncontrolled Fire Edge		

113°27'0"W 113°26'0"W 113°25'0"W 113°24'0"W 113°23'0"W 113°22'0"W 113°21'0"W 113°20'0"W 113°19'0"W 113°18'0"W 113°17'0"W 113°16'0"W

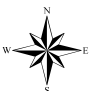
Div B

47°17'0"N
47°16'0"N
47°15'0"N
47°14'0"N

47°17'0"N
47°16'0"N
47°15'0"N
47°14'0"N



Rice Ridge Fire Incident Action Plan



- Dip Site
- Drop Point
- Helispot
- Lookout
- Water Source
- Completed Hand Line
- Line Break Completed

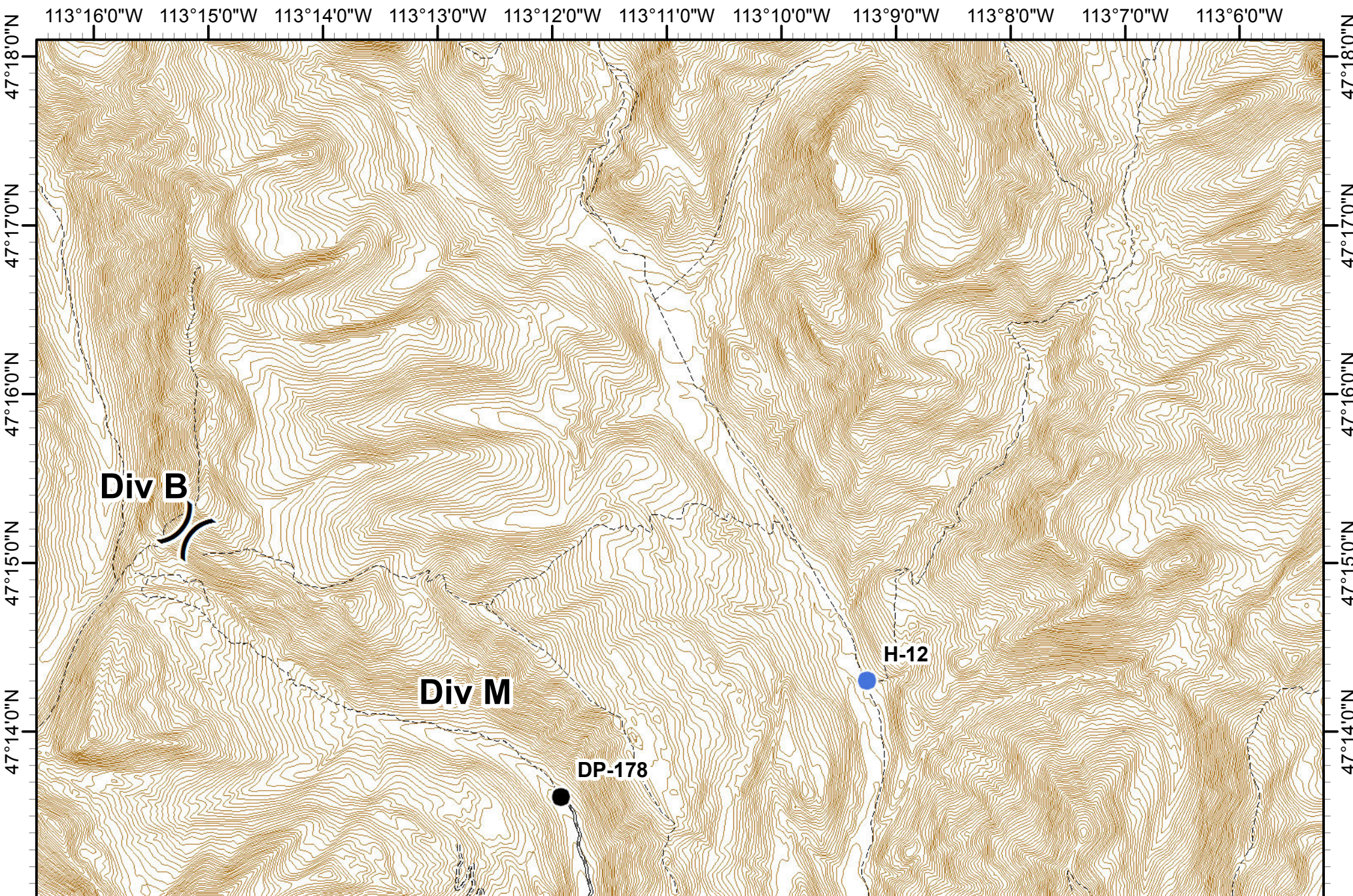
- SuppData_FireE...**
- Feature Category (Line Type)**
- Uncontrolled Fire Edge
- IR_Intens...

- Wildfire Daily Fire Perimeter

MT-LNF-001464 **MAP 3**
08/31/2017
Approx Acres 32,222

0 0.5 1 Miles



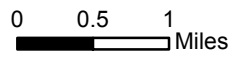


Rice Ridge Fire Incident Action Plan



MT-LNF-001464
08/31/2017
Approx Acres 32,222

MAP 4



Drop Point

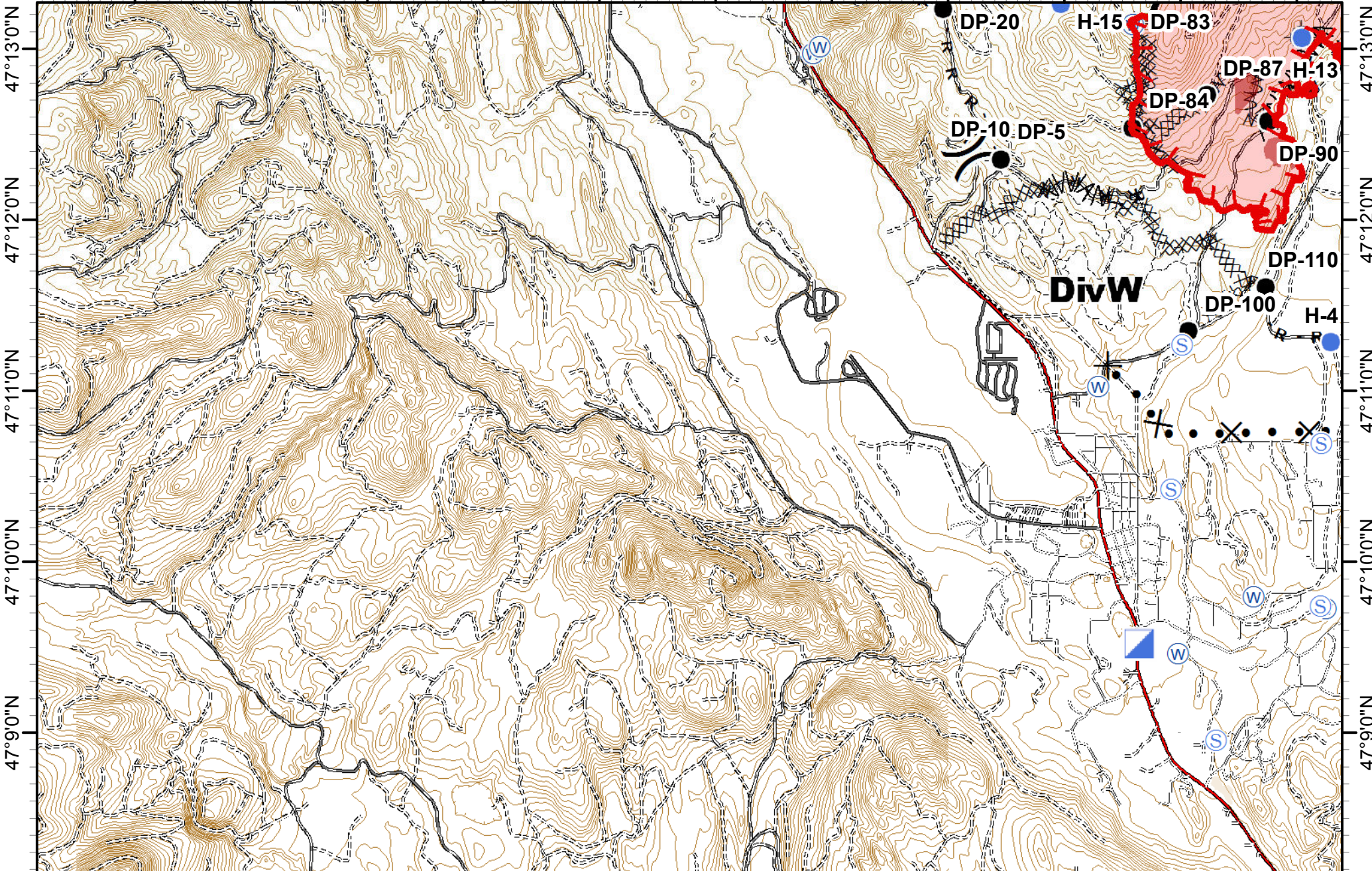


Helispot



Division Break

113°37'0"W 113°36'0"W 113°35'0"W 113°34'0"W 113°33'0"W 113°32'0"W 113°31'0"W 113°30'0"W 113°29'0"W 113°28'0"W 113°27'0"W



Rice Ridge Fire
Incident Action Plan



MT-LNF-001464 MAP 5
08/31/2017
Approx Acres 32,222

0 0.5 1 Miles

- Dip Site
- Drop Point
- Helispot
- Incident Command Post
- Spot Fire
- Staging Area

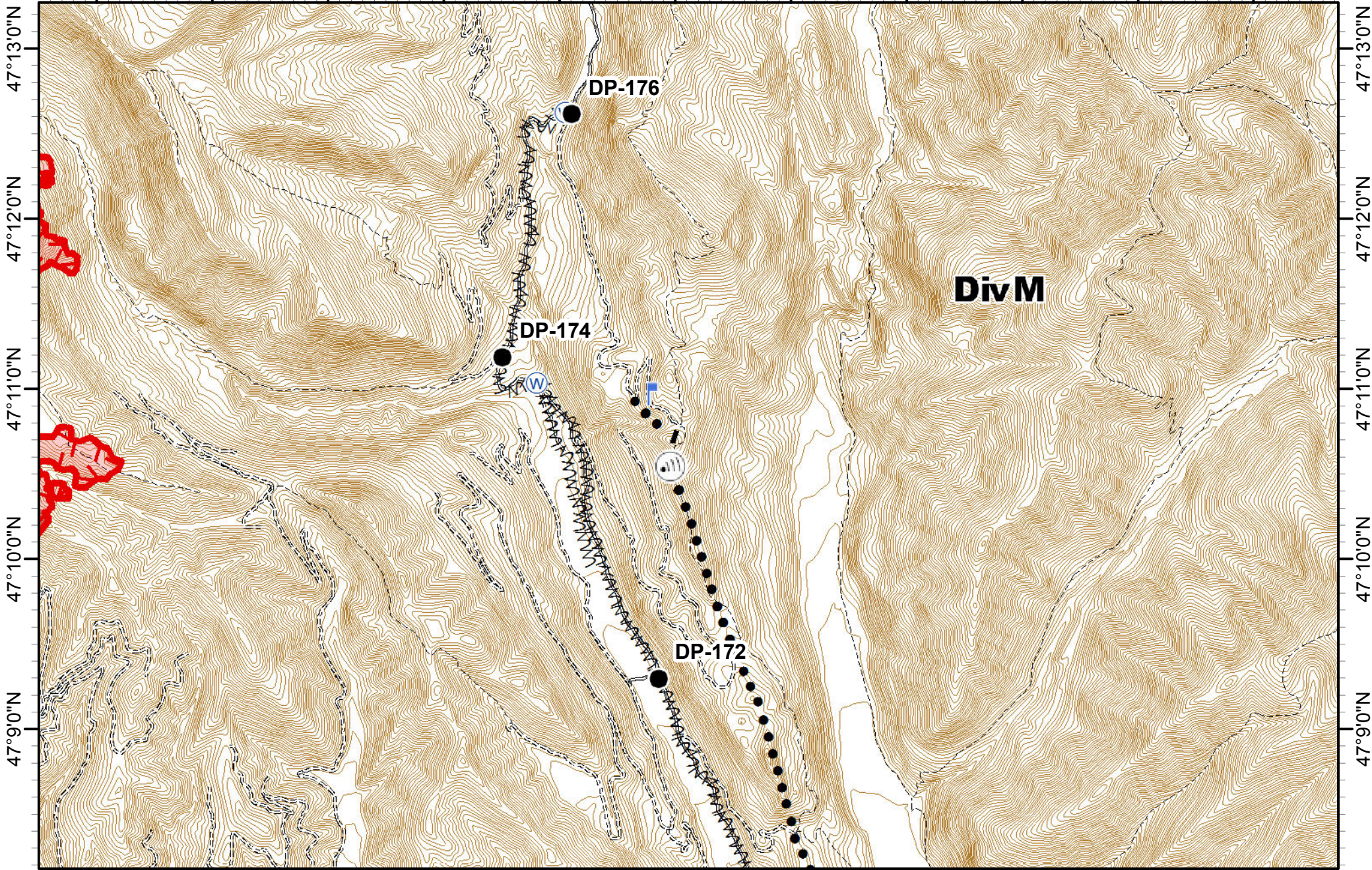
- Water Source
- Division Break

- Completed Dozer Line
- Completed Hand Line
- Road as Completed Line
- Line Break Completed
- Proposed Dozer Line
- Fire Break Planned or Incomplete

- SuppData_FireE...**
- IR_Intens...
 - Wildfire Daily Fire Perimeter
- Feature Category (Line Type)**
- Completed Line
 - Uncontrolled Fire Edge



113°16'0"W 113°15'0"W 113°14'0"W 113°13'0"W 113°12'0"W 113°11'0"W 113°10'0"W 113°9'0"W 113°8'0"W 113°7'0"W 113°6'0"W



47°13'0"N
47°12'0"N
47°11'0"N
47°10'0"N
47°9'0"N

47°13'0"N
47°12'0"N
47°11'0"N
47°10'0"N
47°9'0"N

Rice Ridge Fire Incident Action Plan



● Drop Point

▬ Lookout

▬ Planned Fire Line
● Planned Secondary Line

SuppData_FireE...
Feature Category (Line Type)

▭ Wildfire Daily Fire Perimeter

Ⓜ Internet Access

Ⓜ Water Source

▭ Fire Break Planned or Incomplete

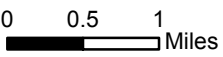
▭ Uncontrolled Fire Edge

▭ IR_Intens...

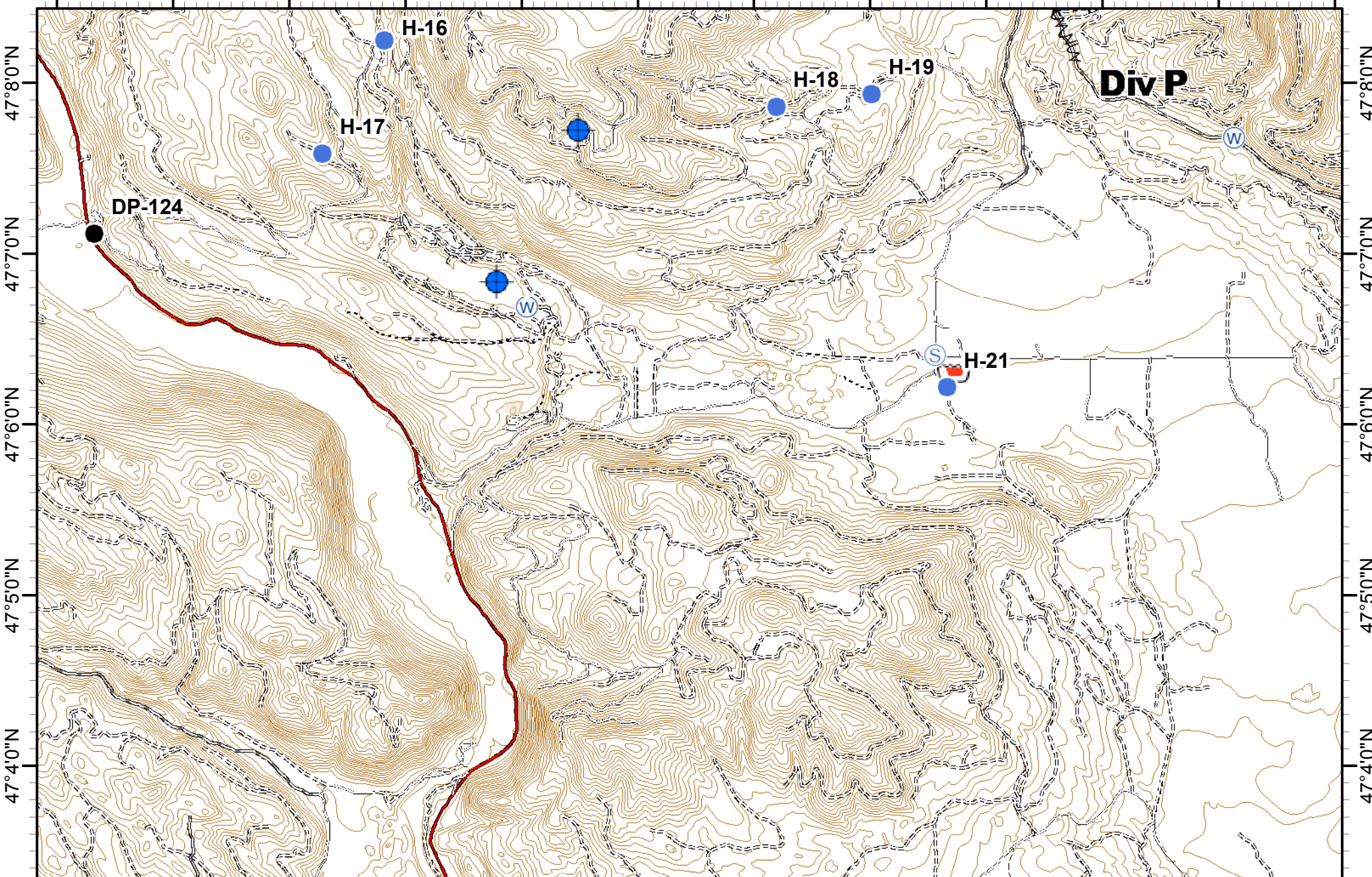


MT-LNF-001464
08/31/2017
Approx Acres 32,222

MAP 7



113°27'0"W 113°26'0"W 113°25'0"W 113°24'0"W 113°23'0"W 113°22'0"W 113°21'0"W 113°20'0"W 113°19'0"W 113°18'0"W 113°17'0"W 113°16'0"W



47°40'N
47°50'N
47°60'N
47°70'N
47°80'N

47°40'N
47°50'N
47°60'N
47°70'N
47°80'N

Rice Ridge Fire Incident Action Plan

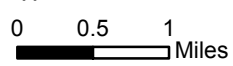


- Retardant/... Pit
- Dip Site
- Drop Point

- Helispot
- Staging Area
- Water Source
- Road as Completed Line
- Fire Break Planned or Incomplete



MT-LNF-001464 MAP 8
08/31/2017
Approx Acres 32,222



113°16'0"W 113°15'0"W 113°14'0"W 113°13'0"W 113°12'0"W 113°11'0"W 113°10'0"W 113°9'0"W 113°8'0"W 113°7'0"W 113°6'0"W

47°8'0"N

47°7'0"N

47°6'0"N

47°5'0"N

47°4'0"N

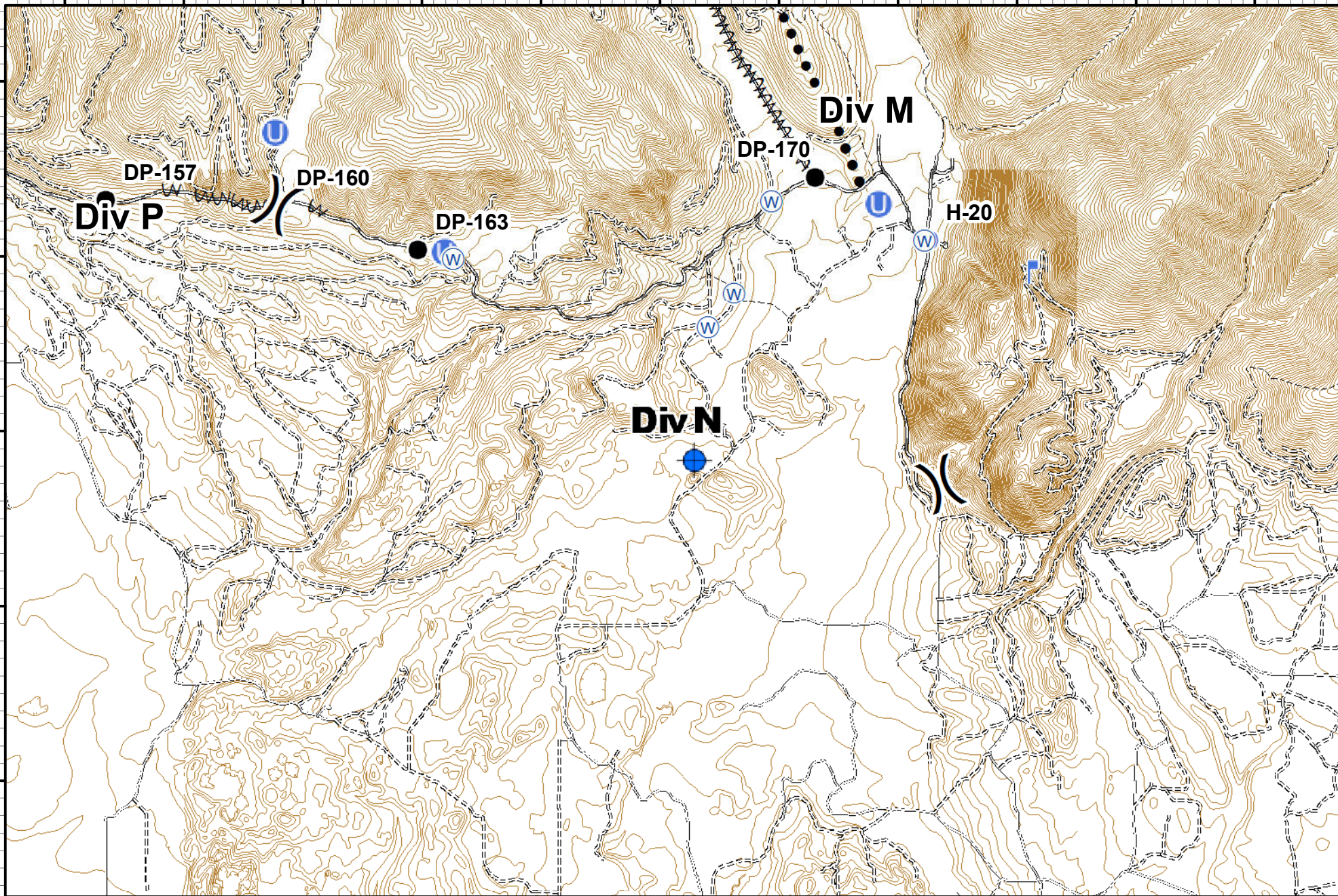
47°8'0"N

47°7'0"N

47°6'0"N

47°5'0"N

47°4'0"N



Rice Ridge Fire
Incident Action Plan



Dip Site



Helispot



Division Break



Planned Secondary Line



Drop Point



Water Source



Fire Break Planned or Incomplete



Unimproved Landing Area



Lookout



MT-LNF-001464 **MAP 9**
 08/31/2017
 Approx Acres 32,222

