

113°36'0"W 113°32'0"W 113°28'0"W 113°24'0"W 113°20'0"W 113°16'0"W 113°12'0"W 113°8'0"W 113°4'0"W 113°0'0"W 112°56'0"W

# Public Information Map RICE RIDGE FIRE

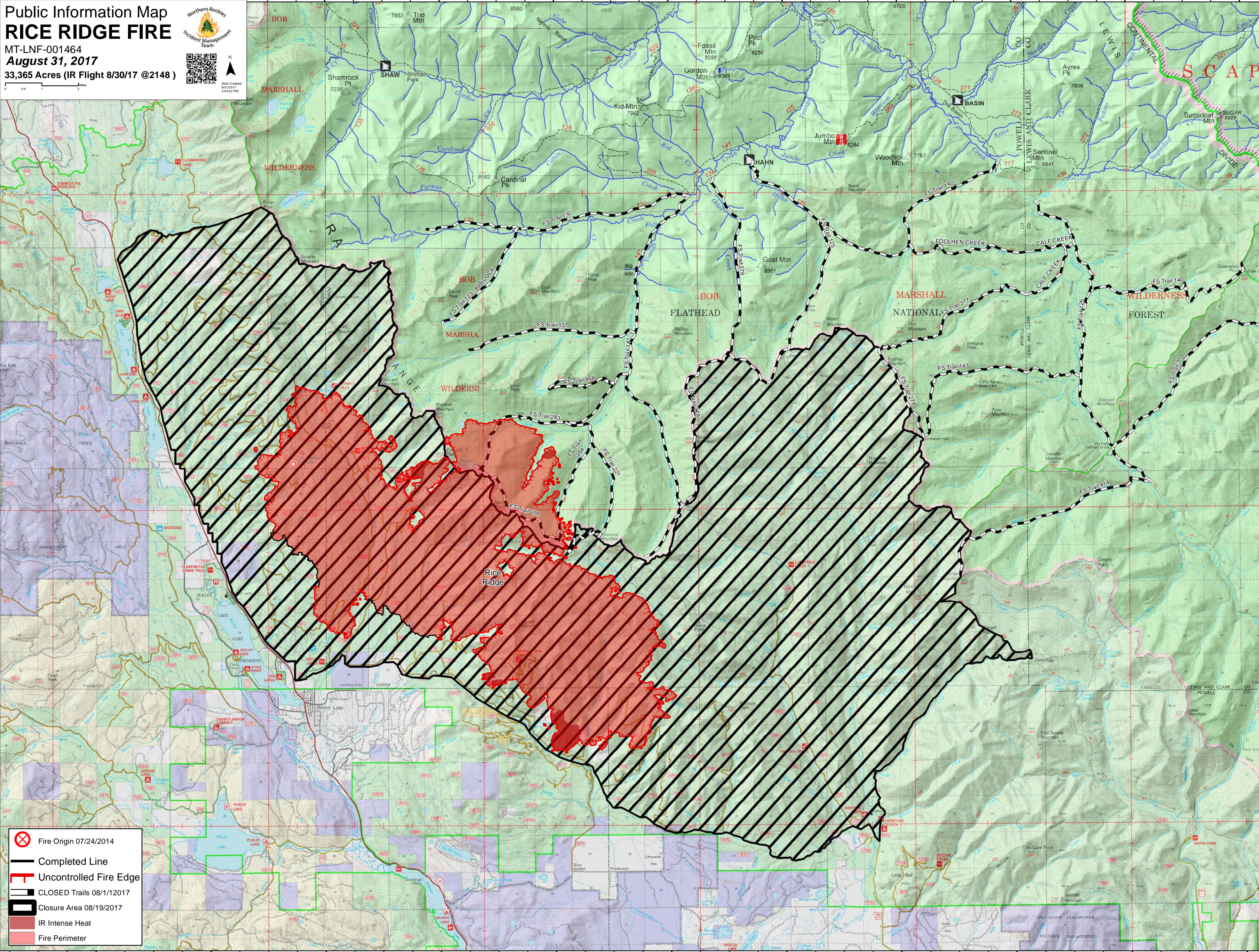
MT-LNF-001464  
August 31, 2017  
33,365 Acres (IR Flight 8/30/17 @2148)



Date Created: 8/31/2017 8:42 PM

47°24'0"N  
47°20'0"N  
47°16'0"N  
47°12'0"N  
47°8'0"N

47°24'0"N  
47°20'0"N  
47°16'0"N  
47°12'0"N  
47°8'0"N



- Fire Origin 07/24/2014
- Completed Line
- Uncontrolled Fire Edge
- CLOSED Trails 08/1/2017
- Closure Area 08/19/2017
- IR Intense Heat
- Fire Perimeter

113°36'0"W 113°32'0"W 113°28'0"W 113°24'0"W 113°20'0"W 113°16'0"W 113°12'0"W 113°8'0"W 113°4'0"W 113°0'0"W 112°56'0"W