

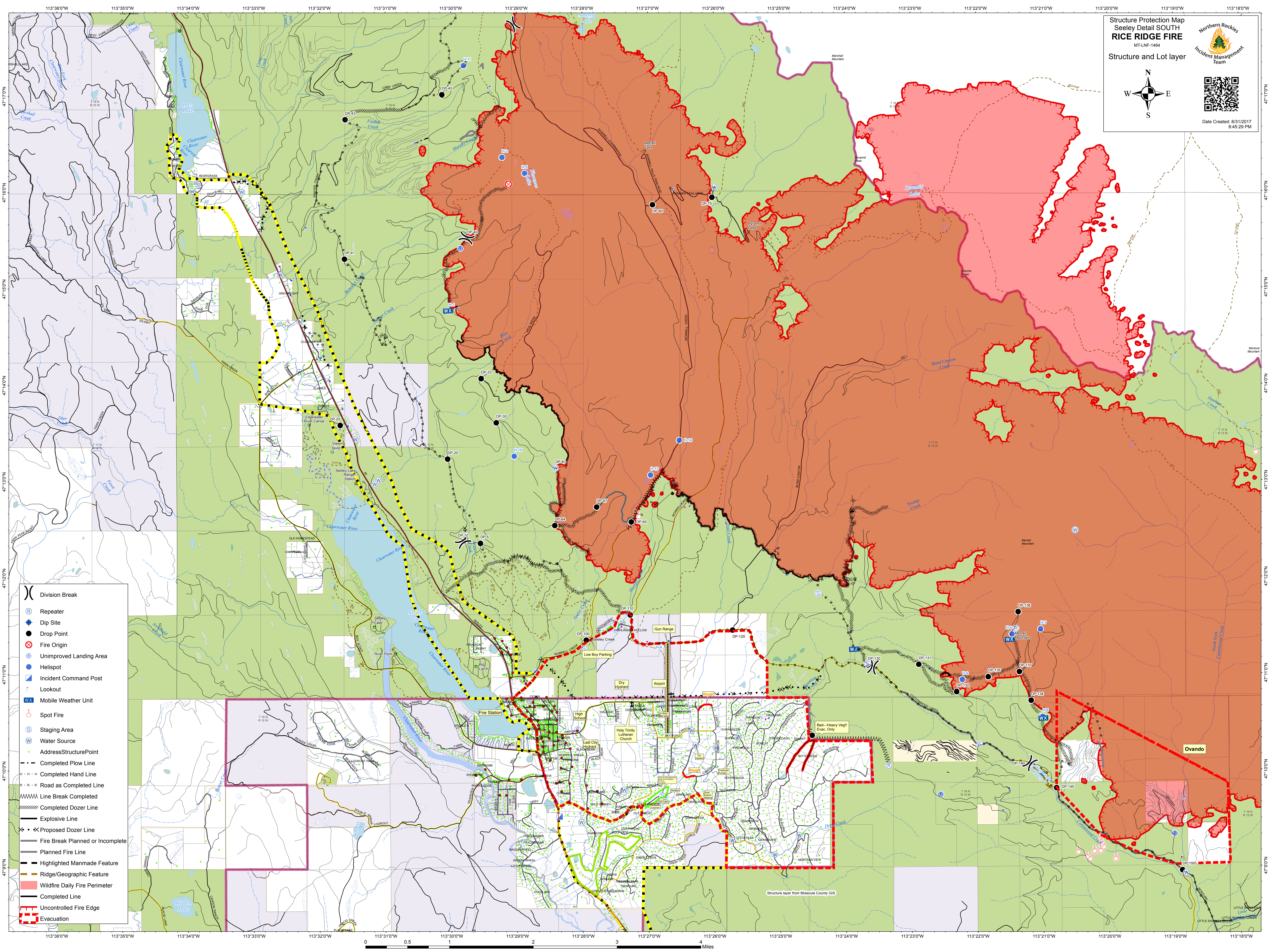


Structure Protection Map
Seeley Detail SOUTH
RICE RIDGE FIRE
MT-LNF-1464

Structure and Lot layer

Date Created: 8/31/2017
8:45:29 PM



- () Division Break
- (R) Repeater
- (D) Dip Site
- (●) Drop Point
- (X) Fire Origin
- (U) Unimproved Landing Area
- (H) Helispot
- (C) Incident Command Post
- (L) Lookout
- (WX) Mobile Weather Unit
- (S) Spot Fire
- (S) Staging Area
- (W) Water Source
- (●) AddressStructurePoint
- - - Completed Plow Line
- - - Completed Hand Line
- - - Road as Completed Line
- ||||| Line Break Completed
- ||||| Completed Dozer Line
- Explosive Line
- × × Proposed Dozer Line
- Fire Break Planned or Incomplete
- Planned Fire Line
- Highlighted Manmade Feature
- Ridge/Geographic Feature
- Wildfire Daily Fire Perimeter
- Completed Line
- Uncontrolled Fire Edge
- Evacuation

0 0.5 1 2 3 4 Miles

Ovando

Structure layer from Missoula County GIS