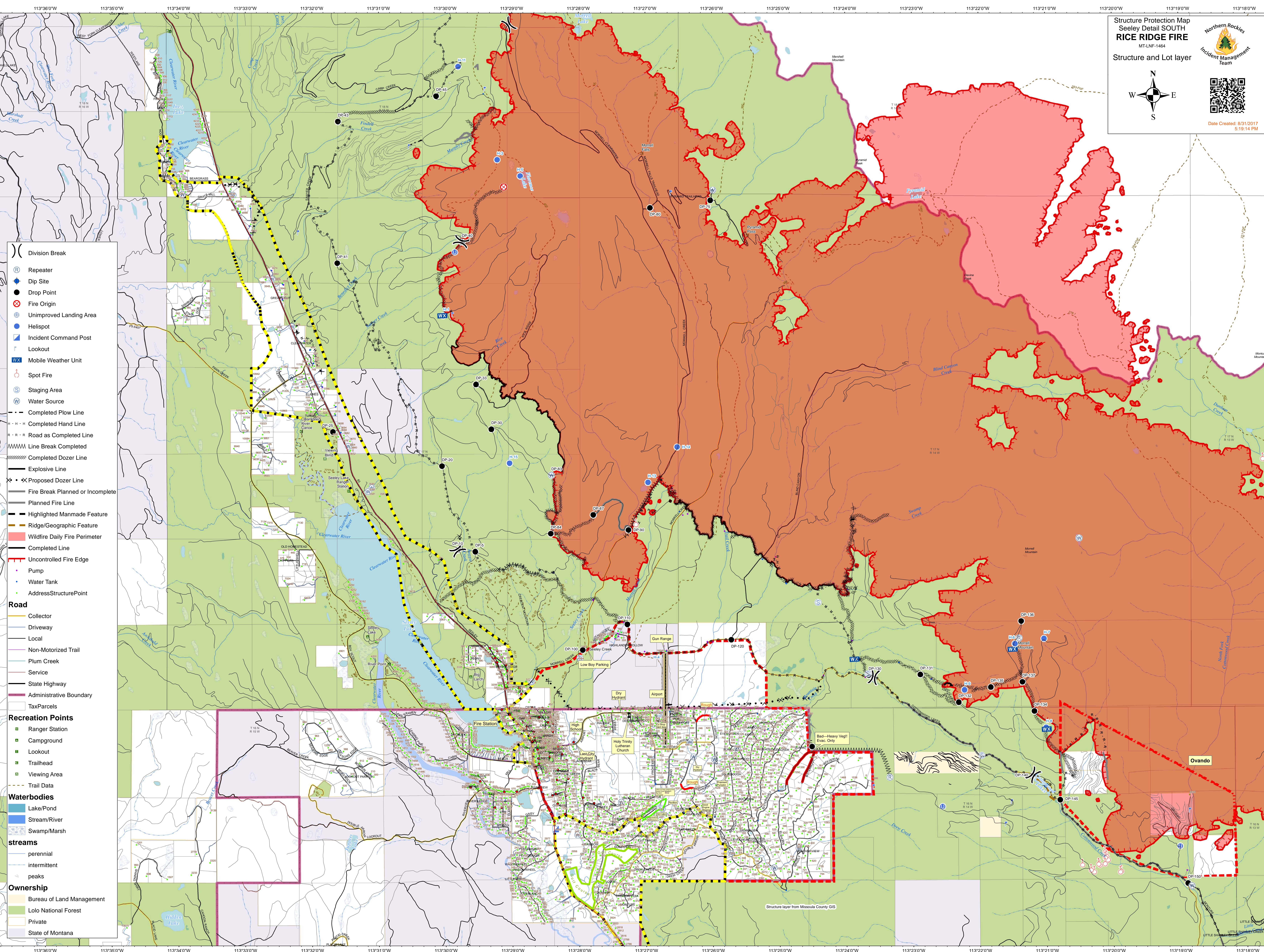


- Division Break
  - Repeater
  - Dip Site
  - Drop Point
  - Fire Origin
  - Unimproved Landing Area
  - Helispot
  - Incident Command Post
  - Lookout
  - Mobile Weather Unit
  - Spot Fire
  - Staging Area
  - Water Source
  - Completed Plow Line
  - Completed Hand Line
  - Road as Completed Line
  - Line Break Completed
  - Completed Dozer Line
  - Explosive Line
  - Proposed Dozer Line
  - Fire Break Planned or Incomplete
  - Planned Fire Line
  - Highlighted Manmade Feature
  - Ridge/Geographic Feature
  - Wildfire Daily Fire Perimeter
  - Completed Line
  - Uncontrolled Fire Edge
  - Pump
  - Water Tank
  - AddressStructurePoint
- Road**
- Collector
  - Driveway
  - Local
  - Non-Motorized Trail
  - Plum Creek
  - Service
  - State Highway
  - Administrative Boundary
  - TaxParcels
- Recreation Points**
- Ranger Station
  - Campground
  - Lookout
  - Trailhead
  - Viewing Area
  - Trail Data
- Waterbodies**
- Lake/Pond
  - Stream/River
  - Swamp/Marsh
- streams**
- perennial
  - intermittent
  - peaks
- Ownership**
- Bureau of Land Management
  - Lolo National Forest
  - Private
  - State of Montana



Ovando

Structure layer from Missoula County GIS