

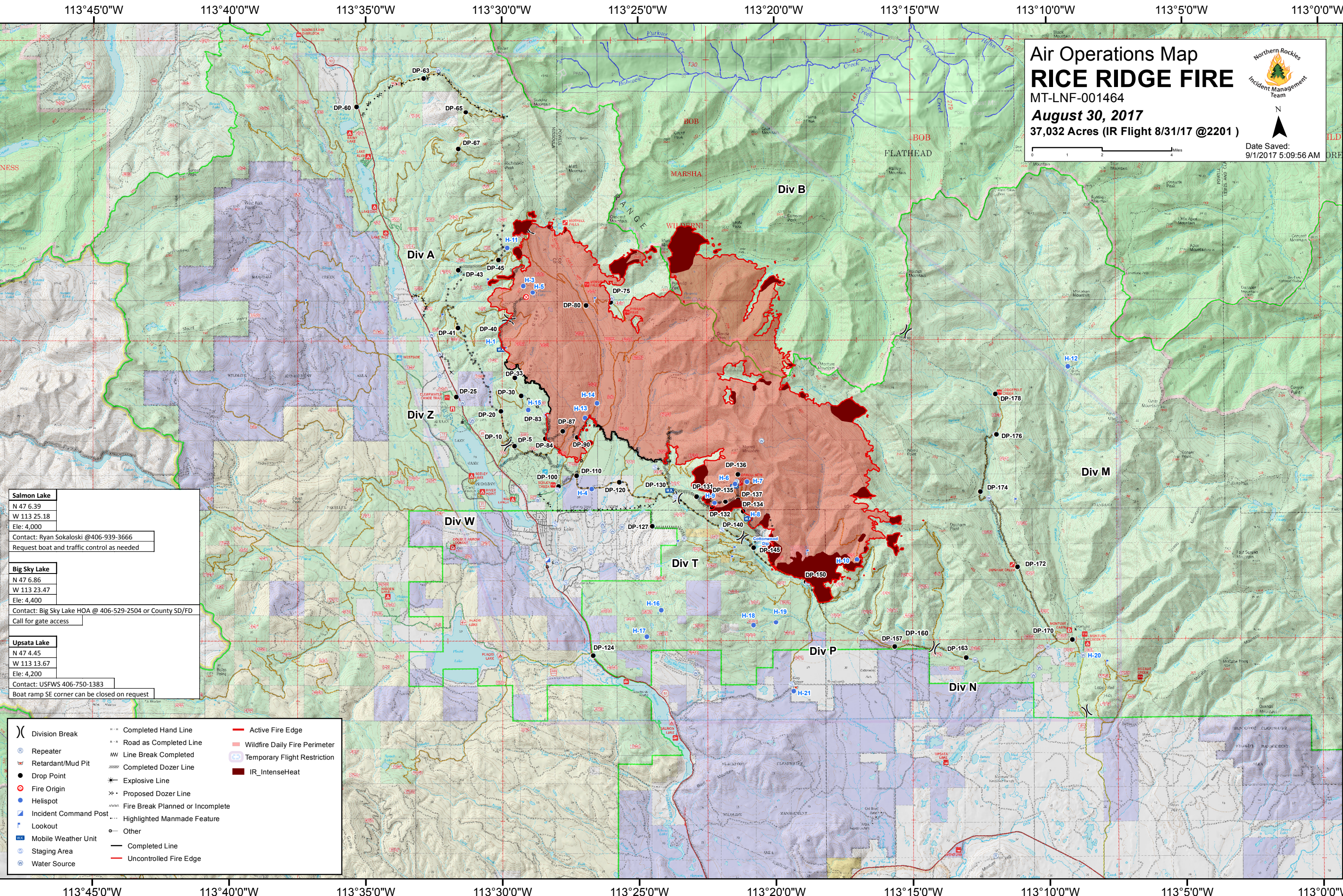
Air Operations Map

RICE RIDGE FIRE

MT-LNF-001464
August 30, 2017
 37,032 Acres (IR Flight 8/31/17 @2201)



0 1 2 4 Miles



Salmon Lake
 N 47 6.39
 W 113 25.18
 Ele: 4,000
 Contact: Ryan Sokaloski @406-939-3666
 Request boat and traffic control as needed

Big Sky Lake
 N 47 6.86
 W 113 23.47
 Ele: 4,400
 Contact: Big Sky Lake HOA @ 406-529-2504 or County SD/FD
 Call for gate access

Upsata Lake
 N 47 4.45
 W 113 13.67
 Ele: 4,200
 Contact: USFWS 406-750-1383
 Boat ramp SE corner can be closed on request

- | | | |
|---------------------------|--------------------------------------|---------------------------------|
| () Division Break | --- Completed Hand Line | — Active Fire Edge |
| (R) Repeater | --- Road as Completed Line | — Wildfire Daily Fire Perimeter |
| (M) Retardant/Mud Pit | --- Line Break Completed | — Temporary Flight Restriction |
| (●) Drop Point | --- Completed Dozer Line | ■ IR_IntenseHeat |
| (*) Fire Origin | --- Explosive Line | |
| (●) Helispot | --- Proposed Dozer Line | |
| (I) Incident Command Post | --- Fire Break Planned or Incomplete | |
| (L) Lookout | --- Highlighted Manmade Feature | |
| (M) Mobile Weather Unit | ○ Other | |
| (S) Staging Area | — Completed Line | |
| (W) Water Source | — Uncontrolled Fire Edge | |