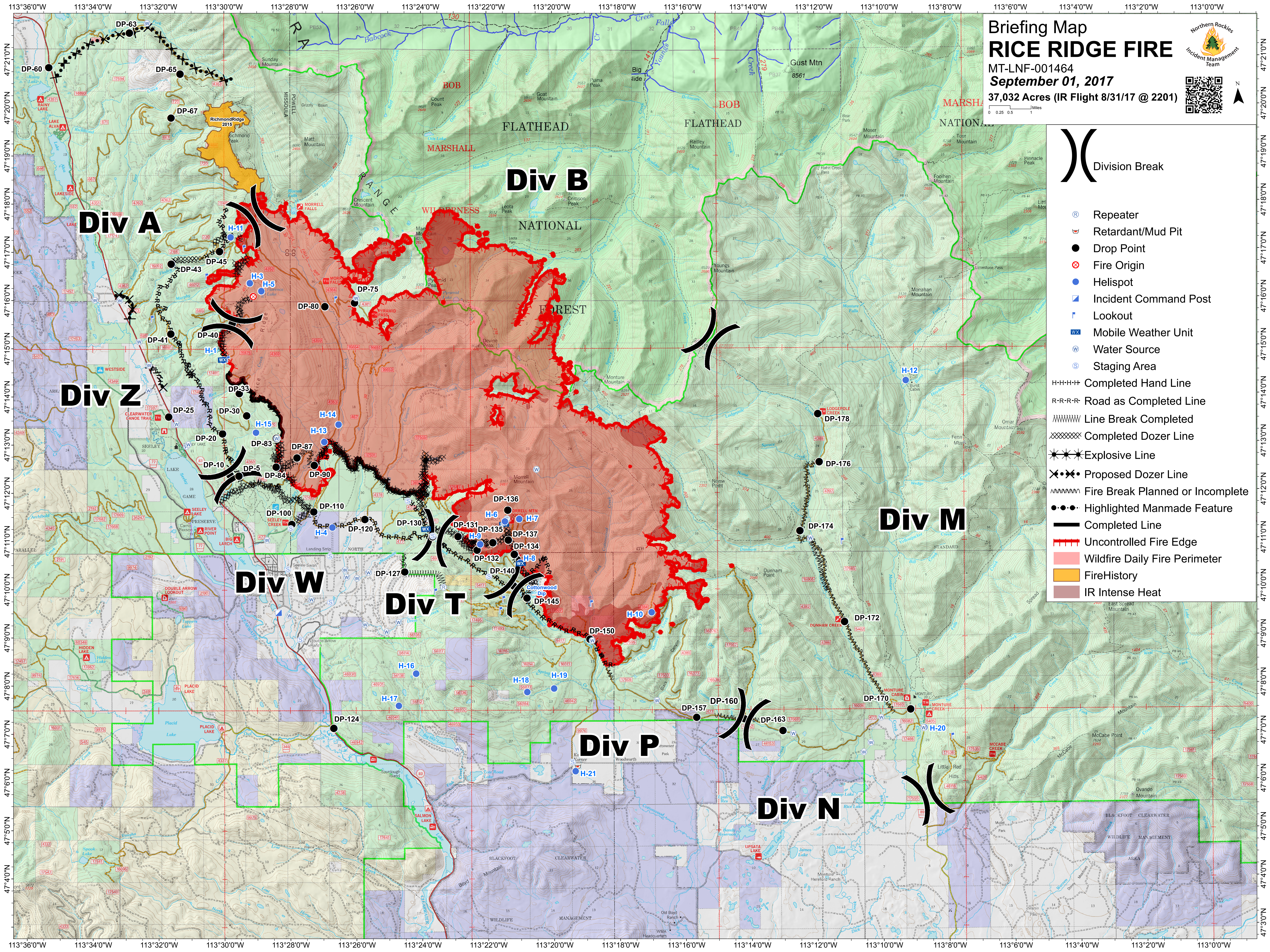


Briefing Map

RICE RIDGE FIRE

MT-LNF-001464
September 01, 2017
 37,032 Acres (IR Flight 8/31/17 @ 2201)



Division Break

- Repeater
- Retardant/Mud Pit
- Drop Point
- Fire Origin
- Helispot
- Incident Command Post
- Lookout
- Mobile Weather Unit
- Water Source
- Staging Area
- +++++ Completed Hand Line
- - - - Road as Completed Line
- ~~~~~ Line Break Completed
- XXXXX Completed Dozer Line
- *** Explosive Line
- Proposed Dozer Line
- ~~~~~ Fire Break Planned or Incomplete
- Highlighted Manmade Feature
- Completed Line
- Uncontrolled Fire Edge
- Wildfire Daily Fire Perimeter
- Fire History
- IR Intense Heat