

# Rice Ridge Fire

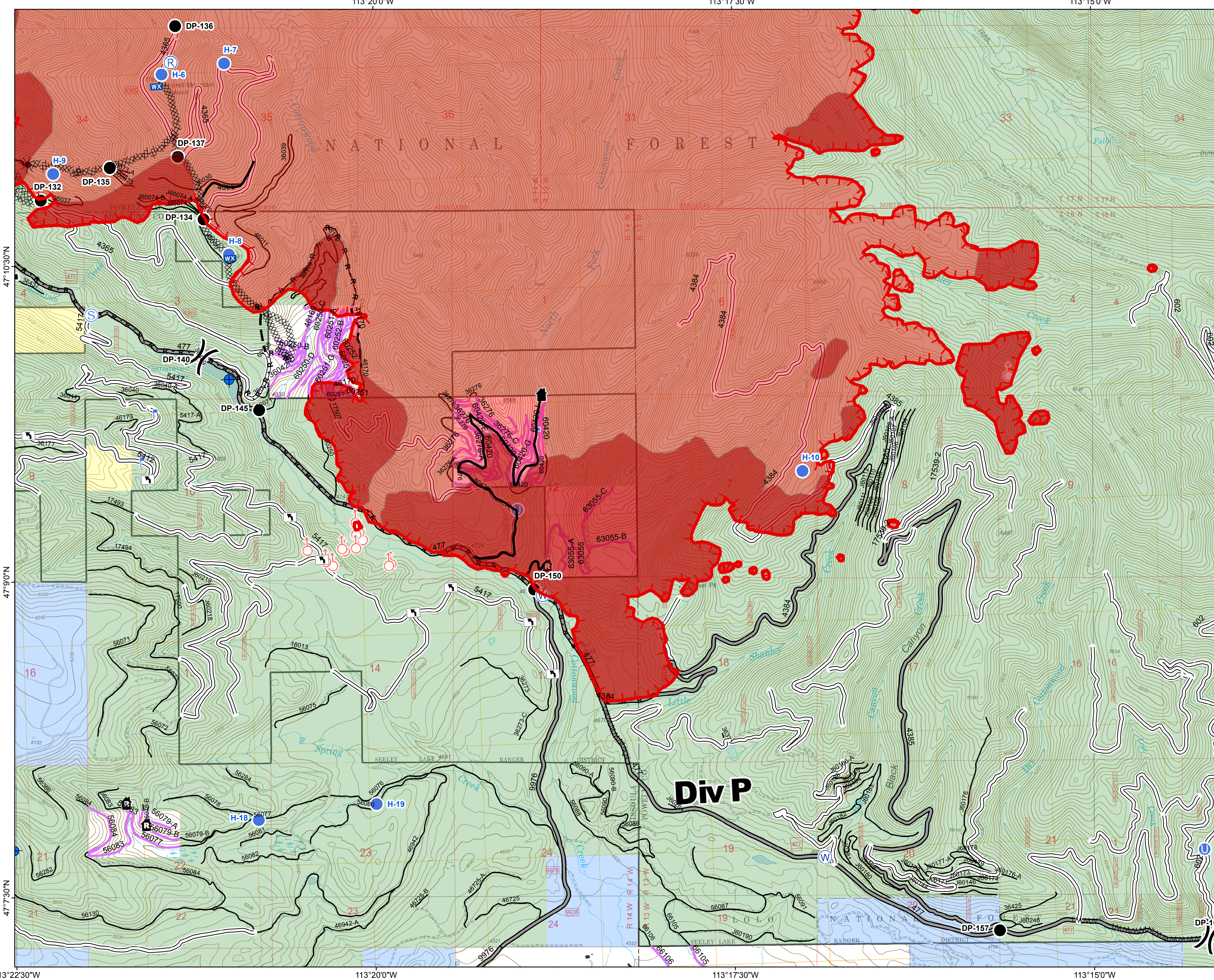
MT-LNF-001464

DIV P

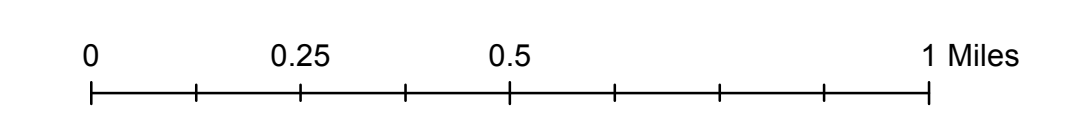
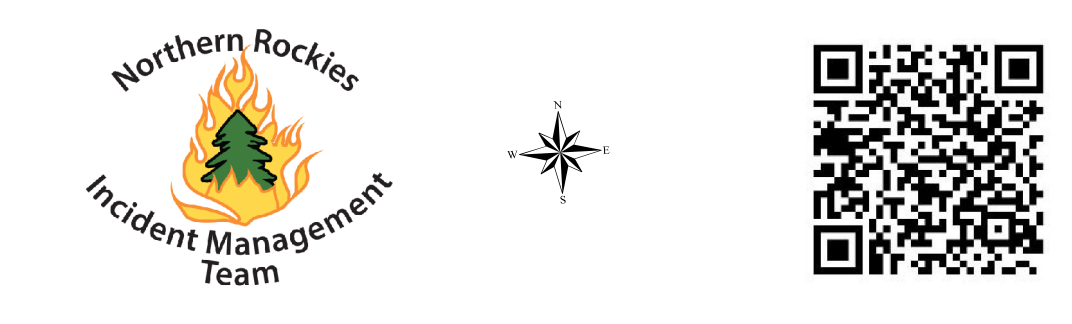
Operations Map

September 1, 2017

37,032 Acres (IR Flight 8/31/17 @2201)



- ( ) Division Break
- (R) Repeater
- (D) Dip Site
- (●) Drop Point
- (U) Unimproved Landing Area
- (●) Helispot
- (F) Lookout
- (WX) Mobile Weather Unit
- (●) Spot Fire
- (S) Staging Area
- (W) Water Source
- (T) Turn Around Area
- (---) Uncontrolled Fire Edge
- (H · H ·) Completed Hand Line
- (R · R ·) Road as Completed Line
- (XXXX) Completed Dozer Line
- (\*) Explosive Line
- (---) Fire Break Planned or Incomplete
- (---) Planned Fire Line
- (---) Forest Service Undetermined
- (---) Other Road
- Forest Service System Roads**
  - 1 - BASIC(CLOSED); 2 - HIGH CLEARANCE
  - 3 - PASSENGER CARS; 4 - MODERATE COMFORT; 5 - HIGH COMFORT
- (---) Private Roads
- (---) Fire Perimeter
- (---) IR Intense Heat
- (---) Montana State Trust Lands
- (---) US Bureau of Land Management
- (---) US Forest Service



113°22'30"W 113°20'0"W 113°17'30"W 113°15'0"W 47°10'30"N 47°9'0"N 47°7'30"N