

Rice Ridge Fire

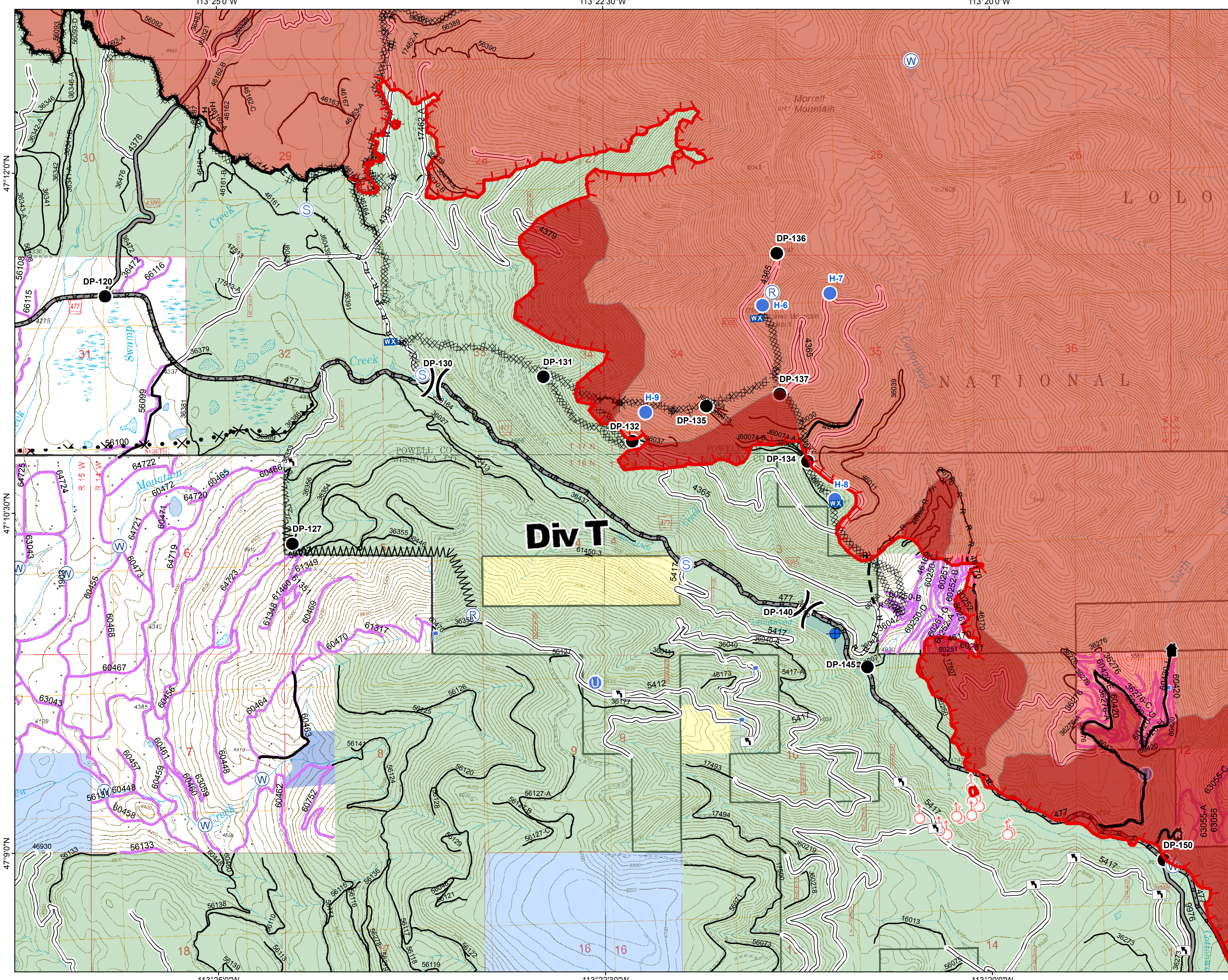
MT-LNF-001464

DIV T

Operations Map


September 1, 2017

37,032 Acres (IR Flight 8/31/17 @2201)



- () Division Break
- (R) Repeater
- (D) Dip Site
- (●) Drop Point
- (S) Unimproved Landing Area
- (H) Helispot
- (L) Lookout
- (WX) Mobile Weather Unit
- (●) Spot Fire
- (S) Staging Area
- (W) Water Source
- (T) Turn Around Area
- (—) Completed Line
- (---) Uncontrolled Fire Edge
- (---) Completed Hand Line
- (---) Road as Completed Line
- (---) Line Break Completed
- (---) Completed Dozer Line
- (---) Explosive Line
- (---) Proposed Dozer Line
- (---) Fire Break Planned or Incomplete
- (---) Planned Fire Line
- (---) Highlighted Manmade Feature
- (---) Forest Service Undetermined
- (---) Other Road
- Forest Service System Roads**
 - 1 - BASIC(CLOSED); 2 - HIGH CLEARANCE
 - 3 - PASSENGER CARS; 4 - MODERATE COMFORT; 5 - HIGH COMFORT
- (---) Private Roads
- (---) Plum Creek Roads
- (---) Other Forest Roads
- (---) Fire Perimeter
- (---) IR Intense Heat
- (---) County Government
- (---) Montana State Trust Lands
- (---) US Bureau of Land Management
- (---) US Forest Service

Northern Rockies
Incident Management
Team



0 0.25 0.5 1 Miles