

# Rice Ridge Fire

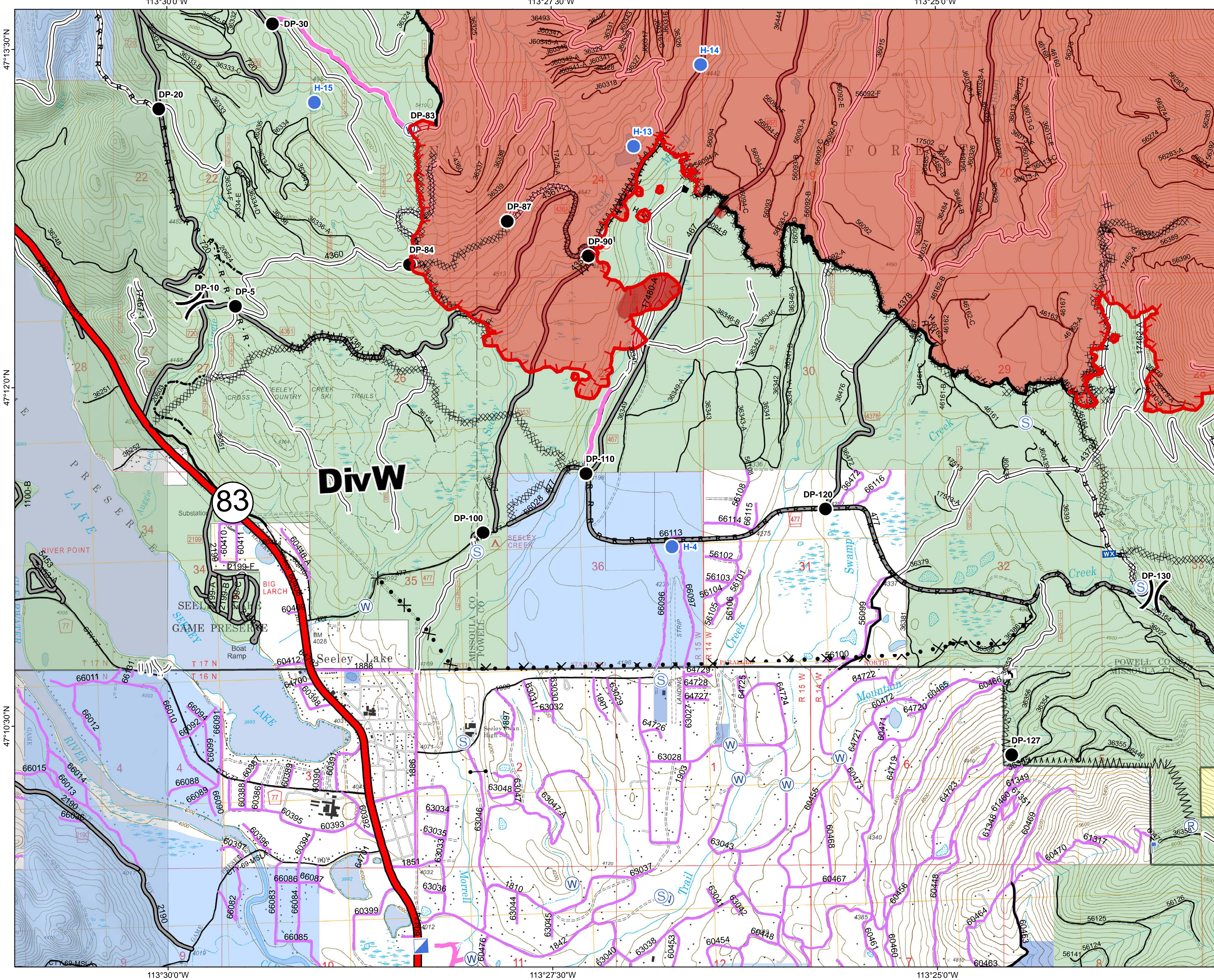
MT-LNF-001464

DIV W

## Operations Map

### September 1, 2017

37,032 Acres (IR Flight 8/31/17 @2201)



- ( ) Division Break
- (R) Repeater
- (D) Dip Site
- (●) Drop Point
- (●) Helispot
- (I) Incident Command Post
- (F) Lookout
- (WX) Mobile Weather Unit
- (●) Spot Fire
- (S) Staging Area
- (W) Water Source
- (—) Gate - No through Access
- (T) Turn Around Area
- (—) Completed Line
- (—) Uncontrolled Fire Edge
- (—) Completed Hand Line
- (R · R · R) Road as Completed Line
- (—) Line Break Completed
- (—) Completed Dozer Line
- (X · X · X) Proposed Dozer Line
- (—) Fire Break Planned or Incomplete
- (—) Highlighted Manmade Feature
- (—) Other
- (—) Forest Service Undetermined
- (—) Other Road
- (—) Interstate and Highways
- Forest Service System Roads**
- 1 - BASIC(CLOSED); 2 - HIGH CLEARANCE
- 3 - PASSENGER CARS; 4 - MODERATE COMFORT; 5 - HIGH COMFORT
- (—) Private Roads
- (—) County
- (—) Plum Creek Roads
- (—) Short Term Spec Roads
- (—) Fire Perimeter
- (—) IR Intense Heat
- (—) County Government
- (—) Montana State Trust Lands
- (—) US Bureau of Land Management
- (—) US Forest Service