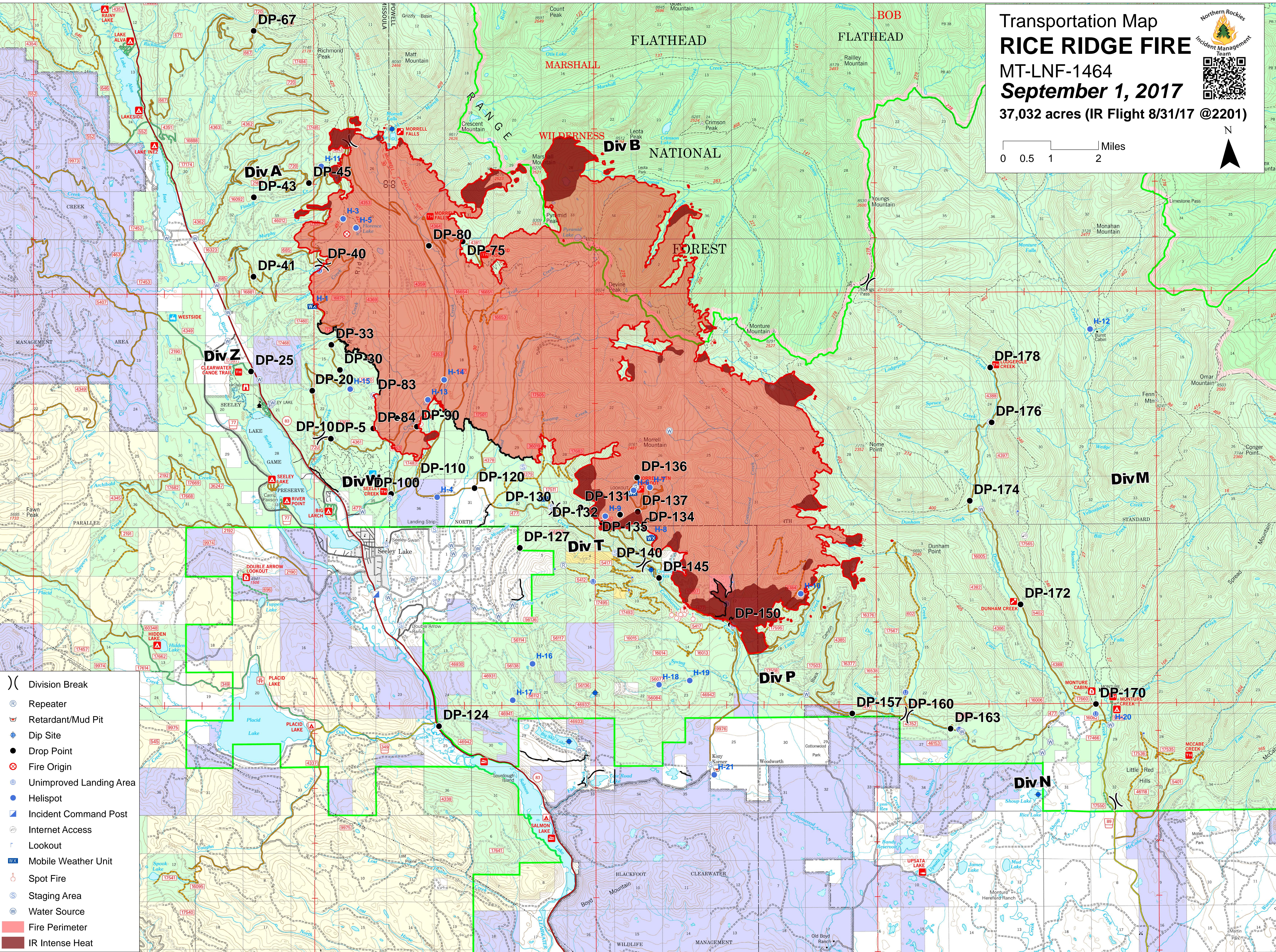
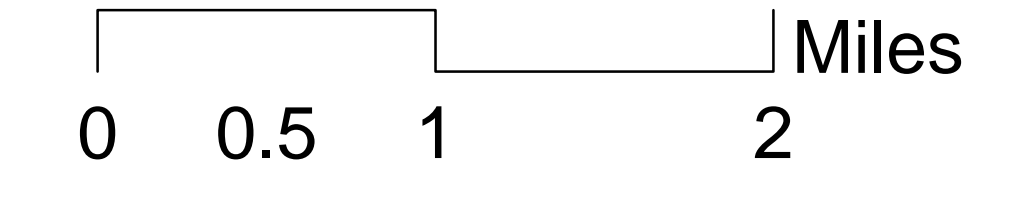


Transportation Map
RICE RIDGE FIRE
 MT-LNF-1464
September 1, 2017
 37,032 acres (IR Flight 8/31/17 @2201)



- () Division Break
- Ⓡ Repeater
- Ⓜ Retardant/Mud Pit
- Ⓢ Dip Site
- Drop Point
- ⊗ Fire Origin
- Ⓢ Unimproved Landing Area
- Helispot
- Ⓜ Incident Command Post
- Ⓢ Internet Access
- Ⓢ Lookout
- Ⓜ Mobile Weather Unit
- Ⓢ Spot Fire
- Ⓢ Staging Area
- Ⓢ Water Source
- Fire Perimeter
- IR Intense Heat