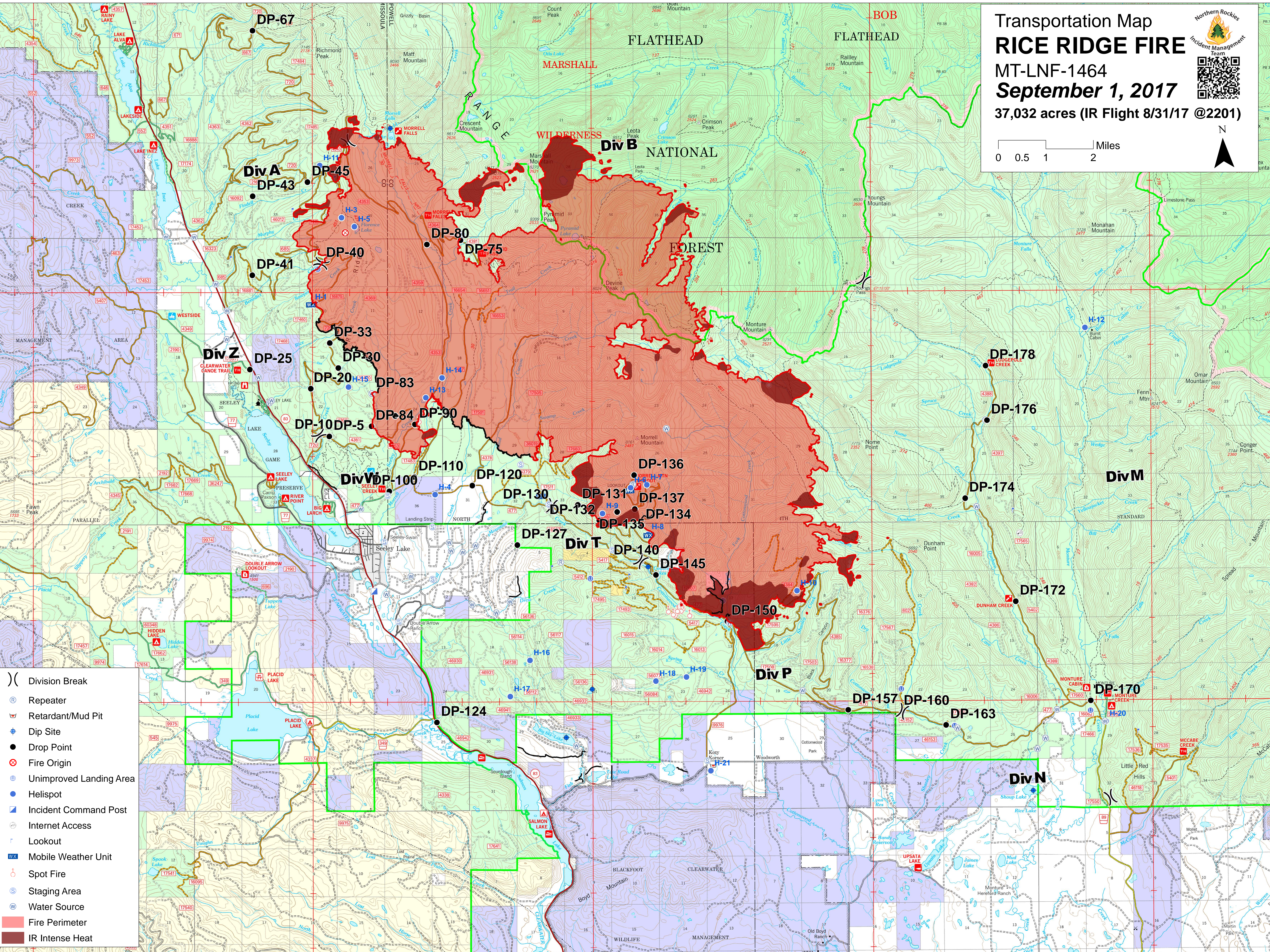
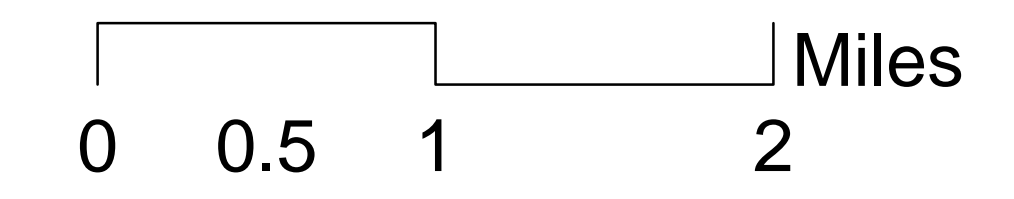


Transportation Map
RICE RIDGE FIRE
MT-LNF-1464
September 1, 2017
37,032 acres (IR Flight 8/31/17 @2201)



- () Division Break
- (R) Repeater
- (M) Retardant/Mud Pit
- (H) Dip Site
- (●) Drop Point
- (⊗) Fire Origin
- (○) Unimproved Landing Area
- (●) Helispot
- (▲) Incident Command Post
- (@) Internet Access
- (f) Lookout
- (WX) Mobile Weather Unit
- (●) Spot Fire
- (S) Staging Area
- (W) Water Source
- (Red outline) Fire Perimeter
- (Dark red) IR Intense Heat