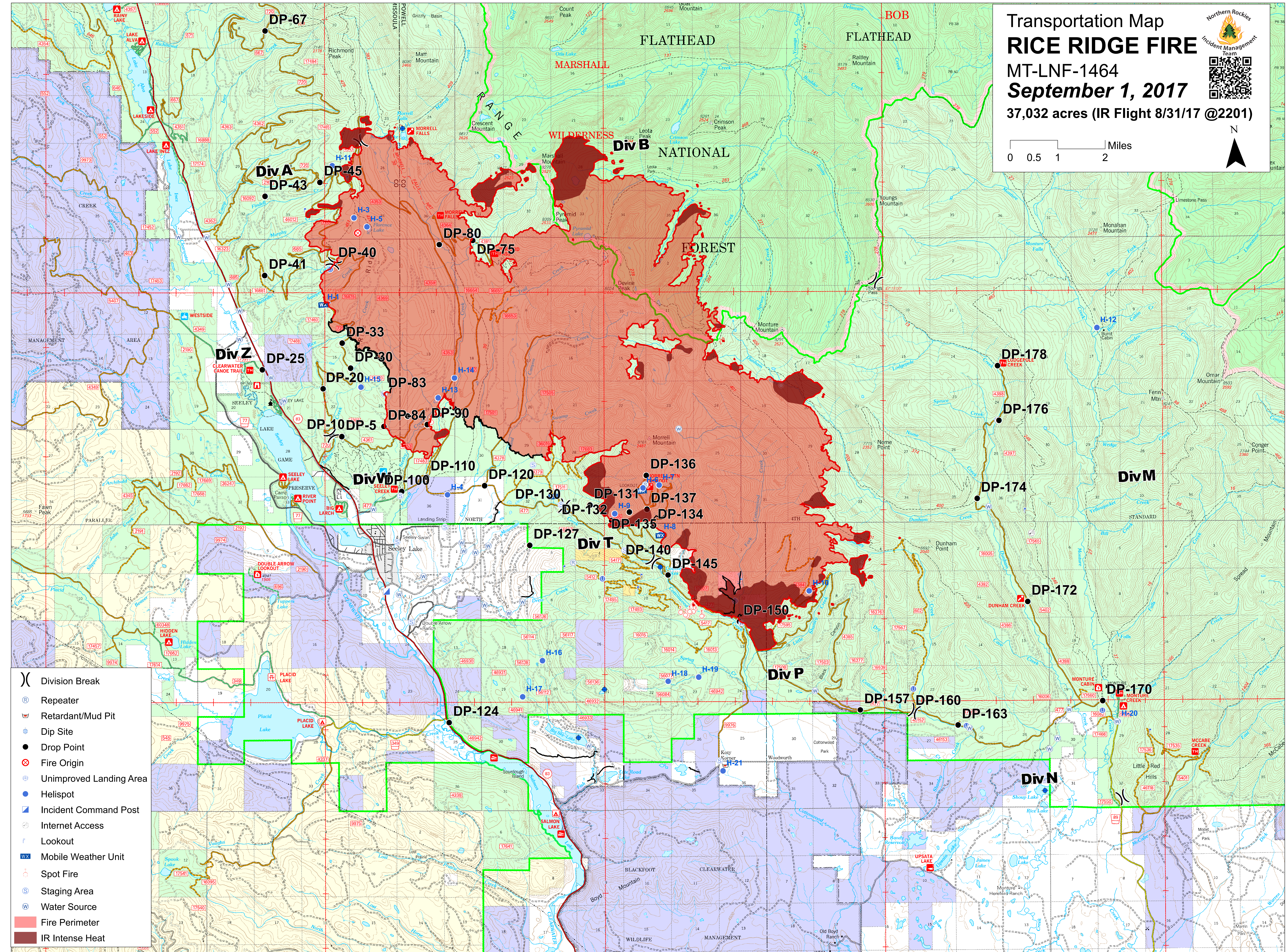
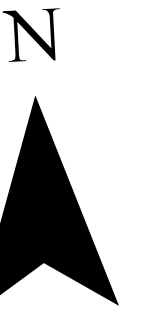
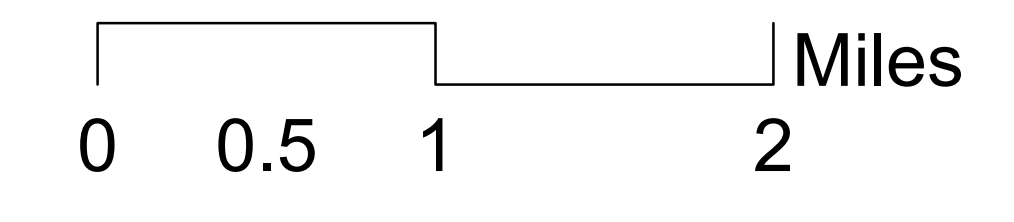


Transportation Map
RICE RIDGE FIRE
 MT-LNF-1464
September 1, 2017
 37,032 acres (IR Flight 8/31/17 @2201)



- () Division Break
- (R) Repeater
- (M) Retardant/Mud Pit
- (D) Dip Site
- (●) Drop Point
- (X) Fire Origin
- (L) Unimproved Landing Area
- (H) Helispot
- (IC) Incident Command Post
- (I) Internet Access
- (L) Lookout
- (WX) Mobile Weather Unit
- (S) Spot Fire
- (S) Staging Area
- (W) Water Source
- (Red outline) Fire Perimeter
- (Dark red outline) IR Intense Heat