

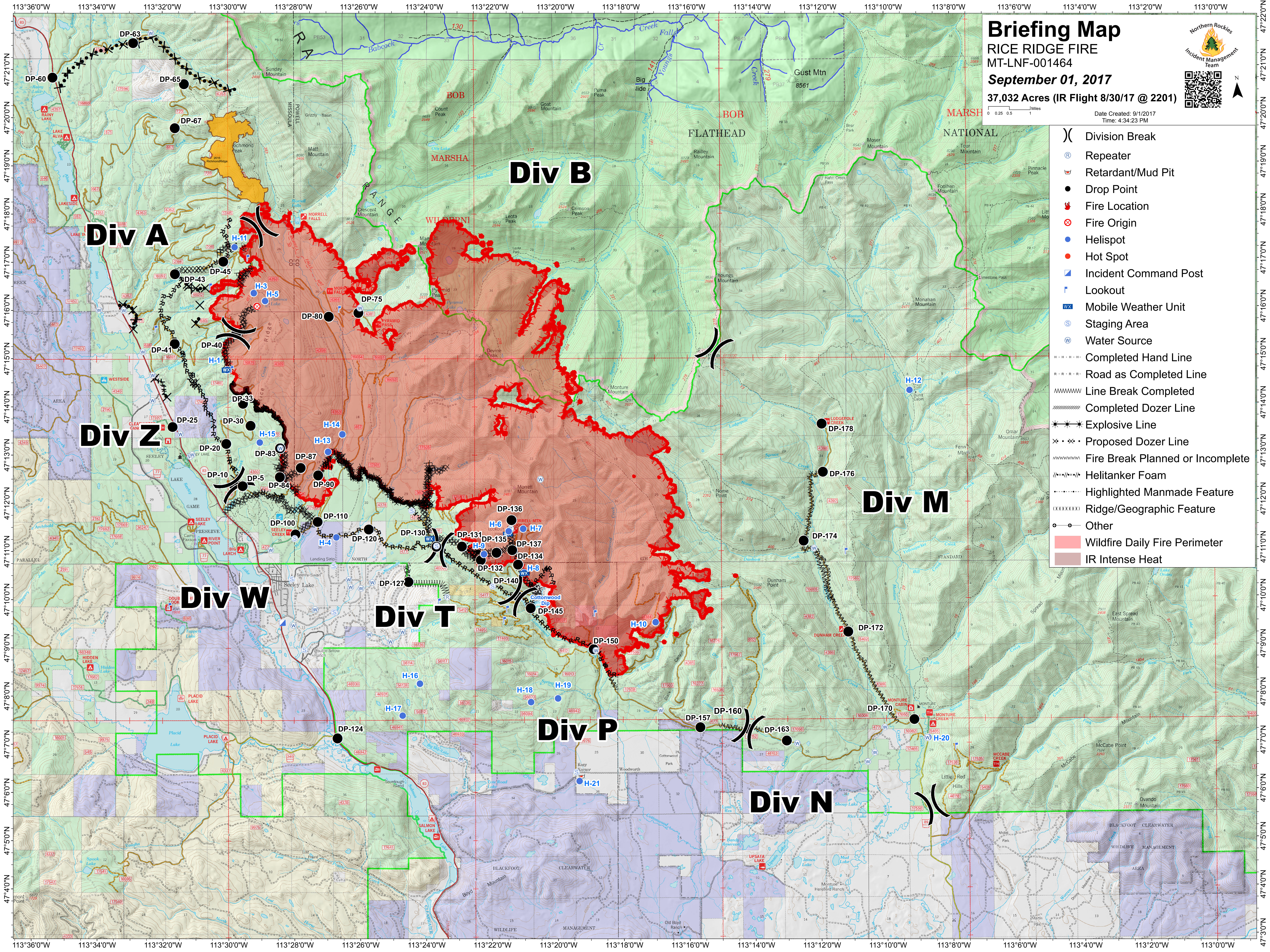
Briefing Map

RICE RIDGE FIRE
MT-LNF-001464

September 01, 2017

37,032 Acres (IR Flight 8/30/17 @ 2201)

Date Created: 9/1/2017
Time: 4:34:23 PM



- () Division Break
- (R) Repeater
- (W) Retardant/Mud Pit
- (●) Drop Point
- (🔥) Fire Location
- (⊗) Fire Origin
- (●) Helispot
- (●) Hot Spot
- (📍) Incident Command Post
- (🔍) Lookout
- (W) Mobile Weather Unit
- (S) Staging Area
- (W) Water Source
- Completed Hand Line
- - - - - Road as Completed Line
- ~~~~~ Line Break Completed
- Completed Dozer Line
- * * * * * Explosive Line
- × × × × × Proposed Dozer Line
- ~~~~~ Fire Break Planned or Incomplete
- ~~~~~ Helitanker Foam
- Highlighted Manmade Feature
- Ridge/Geographic Feature
- ○ ○ Other
- Wildfire Daily Fire Perimeter
- IR Intense Heat