

# Operations Map

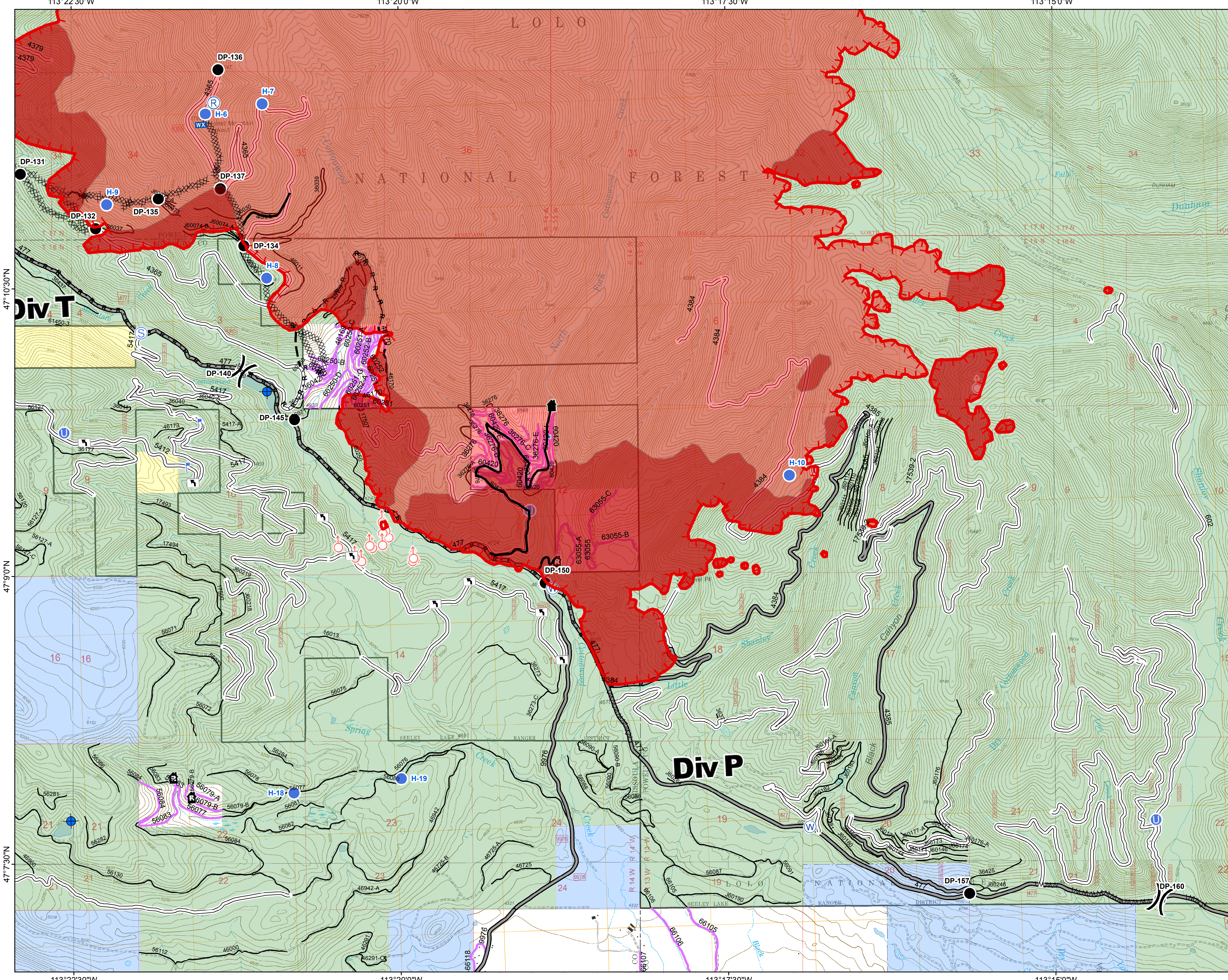
## DIV P

### Rice Ridge Fire

MT-LNF-001464

September 1, 2017

37,032 Acres (IR Flight 8/31/17 @2201)



- ( ) Division Break
- (R) Repeater
- (D) Dip Site
- (●) Drop Point
- (U) Unimproved Landing Area
- (●) Helispot
- (T) Lookout
- (WX) Mobile Weather Unit
- (F) Spot Fire
- (S) Staging Area
- (W) Water Source
- (T) Turn Around Area
- (---) Uncontrolled Fire Edge
- (H · H ·) Completed Hand Line
- (R · R ·) Road as Completed Line
- (XXXX) Completed Dozer Line
- (\*) Explosive Line
- (---) Fire Break Planned or Incomplete
- (---) Planned Fire Line
- (---) Forest Service Undetermined
- (---) Other Road
- Forest Service System Roads**
  - 1 - BASIC(CLOSED); 2 - HIGH CLEARANCE
  - 3 - PASSENGER CARS; 4 - MODERATE COMFORT; 5 - HIGH COMFORT
- (---) Private Roads
- (Red) Fire Perimeter
- (Dark Red) IR Intense Heat
- (Blue) Montana State Trust Lands
- (Yellow) US Bureau of Land Management
- (Green) US Forest Service

Northern Rockies  
Incident Management  
Team

0 0.25 0.5 1 Miles