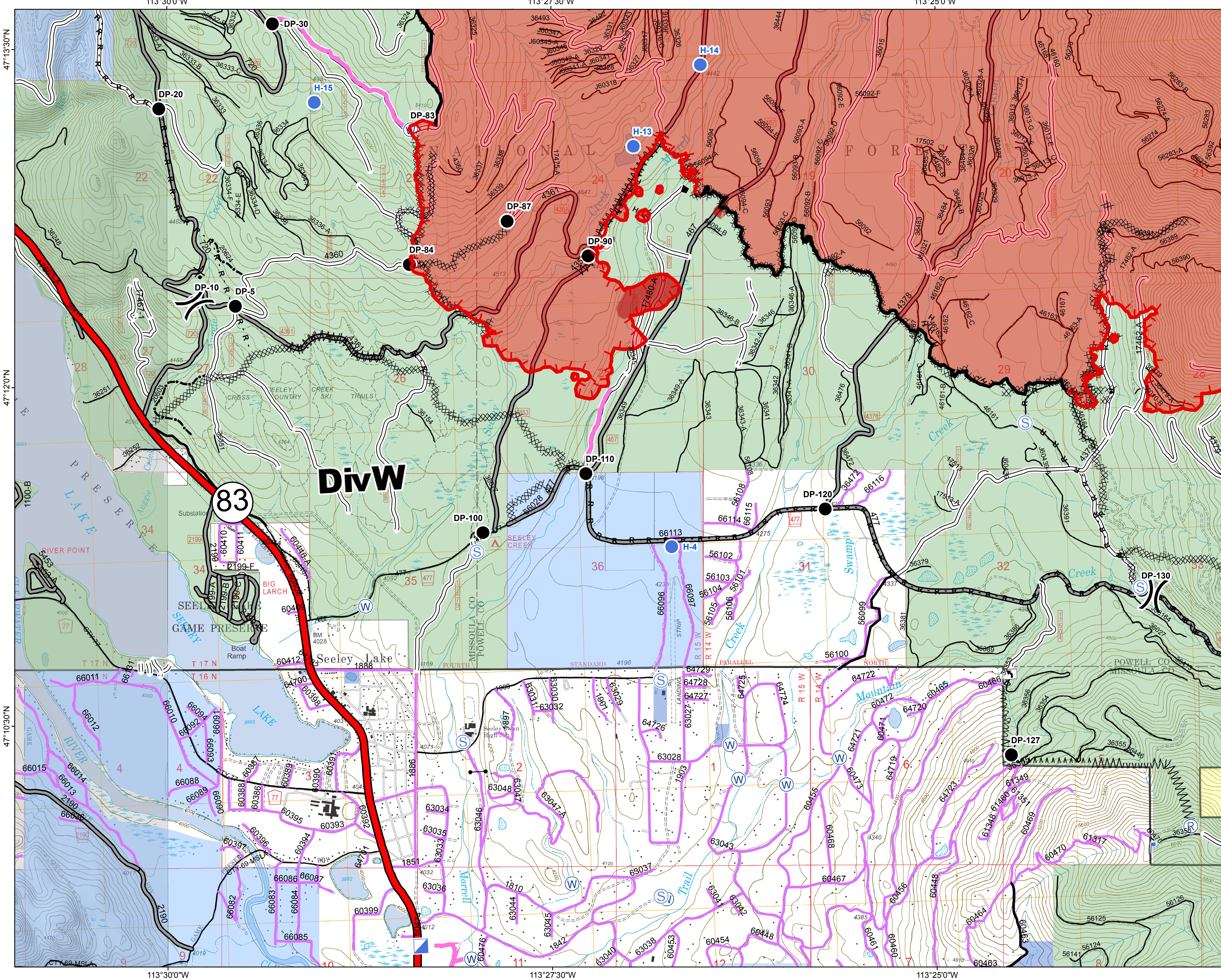


Operations Map DIV W

Rice Ridge Fire
MT-LNF-001464
September 1, 2017
37,032 Acres (IR Flight 8/31/17 @2201)



- () Division Break
- (R) Repeater
- (D) Dip Site
- (●) Drop Point
- (H) Helispot
- (IC) Incident Command Post
- (L) Lookout
- (S) Spot Fire
- (S) Staging Area
- (W) Water Source
- (G) Gate - No through Access
- (T) Turn Around Area
- (—) Completed Line
- (- - -) Uncontrolled Fire Edge
- (H · H ·) Completed Hand Line
- (R · R ·) Road as Completed Line
- (M) Line Break Completed
- (X · X · X ·) Completed Dozer Line
- (X · · · X · · ·) Proposed Dozer Line
- (~) Fire Break Planned or Incomplete
- (· · · · ·) Highlighted Manmade Feature
- (—) Other
- (—) Forest Service Undetermined
- (—) Other Road
- (—) Interstate and Highways
- Forest Service System Roads**
- 1 - BASIC(CLOSED); 2 - HIGH CLEARANCE
- 3 - PASSENGER CARS; 4 - MODERATE COMFORT; 5 - HIGH COMFORT
- (—) Private Roads
- (—) County
- (—) Plum Creek Roads
- (—) Short Term Spec Roads
- (—) Fire Perimeter
- (—) IR Intense Heat
- (—) County Government
- (—) Montana State Trust Lands
- (—) US Bureau of Land Management
- (—) US Forest Service

Northern Rockies
Incident Management
Team

0 0.25 0.5 1 Miles