


### Evacuation and Structure Map

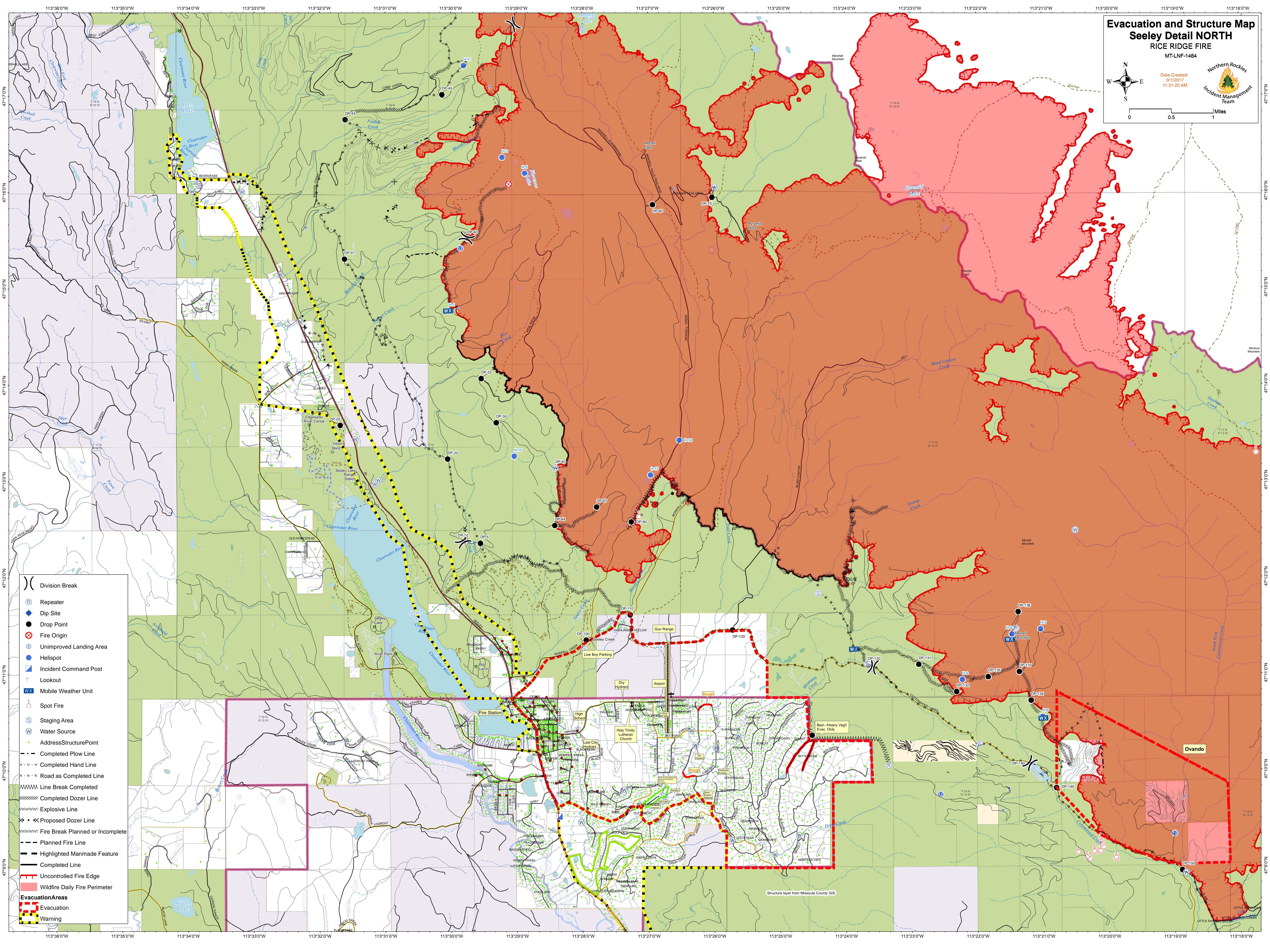
#### Seeley Detail NORTH

RICE RIDGE FIRE  
MT-LNF-1464

Date Created:  
9/7/2017  
11:31:20 AM



0 0.5 1 Miles



- Division Break
- Repeater
- Dip Site
- Drop Point
- Fire Origin
- Unimproved Landing Area
- Helispot
- Incident Command Post
- Lookout
- Mobile Weather Unit
- Spot Fire
- Staging Area
- Water Source
- Address Structure Point
- Completed Plow Line
- Completed Hand Line
- Road as Completed Line
- Line Break Completed
- Completed Dozer Line
- Explosive Line
- Proposed Dozer Line
- Fire Break Planned or Incomplete
- Planned Fire Line
- Highlighted Manmade Feature
- Completed Line
- Uncontrolled Fire Edge
- Wildfire Daily Fire Perimeter
- Evacuation Areas**
- Evacuation
- Warning

Ovando

Structure layer from Missoula County GIS