

Air Operations Map

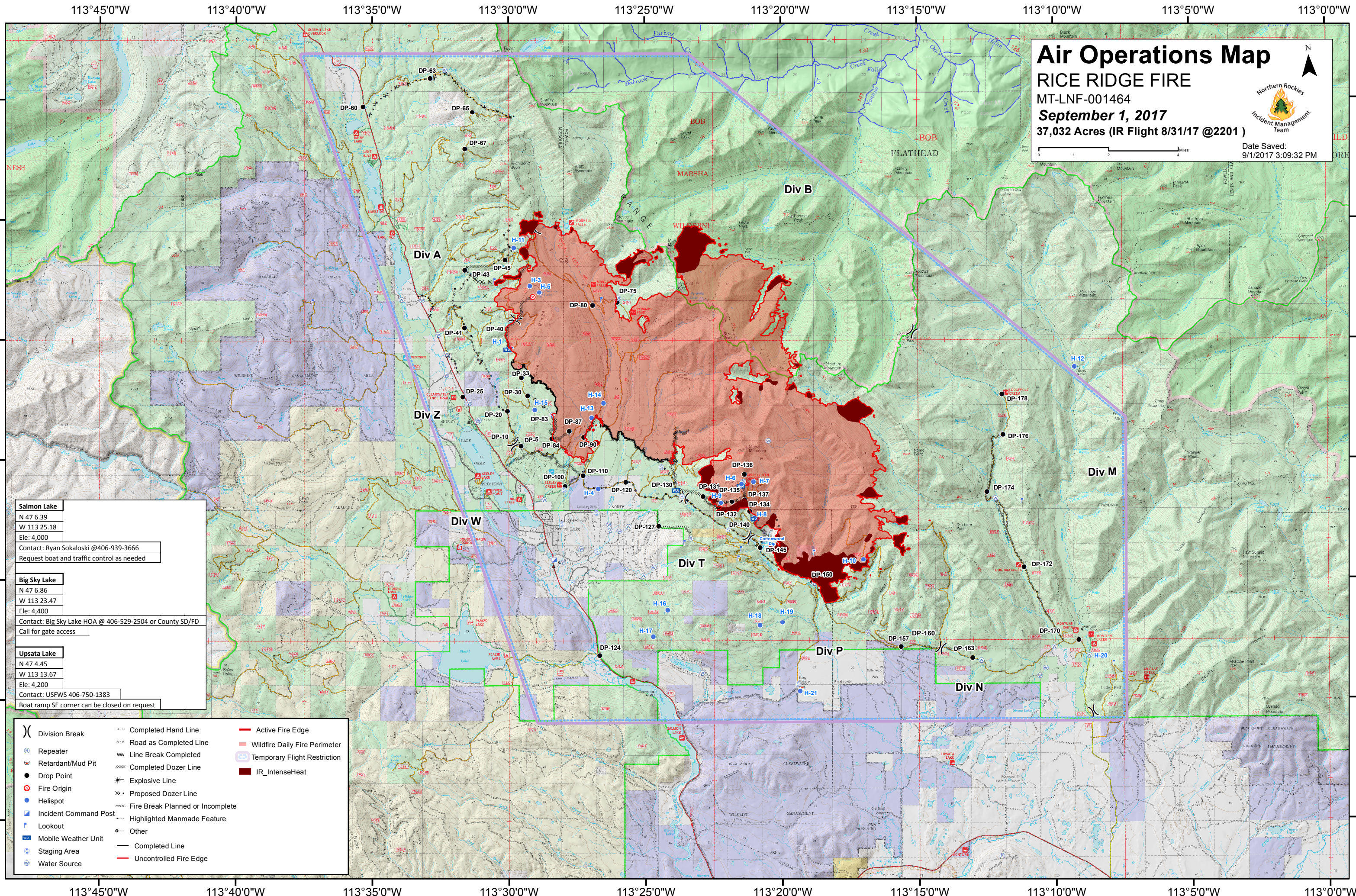
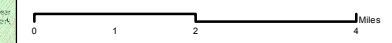
RICE RIDGE FIRE

MT-LNF-001464

September 1, 2017

37,032 Acres (IR Flight 8/31/17 @2201)

Date Saved:
9/1/2017 3:09:32 PM



Salmon Lake
N 47 6.39
W 113 25.18
Ele: 4,000
Contact: Ryan Sokaloski @406-939-3666
Request boat and traffic control as needed

Big Sky Lake
N 47 6.86
W 113 23.47
Ele: 4,400
Contact: Big Sky Lake HOA @ 406-529-2504 or County SD/FD
Call for gate access

Upsata Lake
N 47 4.45
W 113 13.67
Ele: 4,200
Contact: USFWS 406-750-1383
Boat ramp SE corner can be closed on request

(X) Division Break	--- Completed Hand Line	— Active Fire Edge
(R) Repeater	--- Road as Completed Line	--- Wildfire Daily Fire Perimeter
(M) Retardant/Mud Pit	--- Line Break Completed	--- Temporary Flight Restriction
(D) Drop Point	--- Completed Dozer Line	■ IR_IntenseHeat
(F) Fire Origin	--- Explosive Line	
(H) Helispot	--- Proposed Dozer Line	
(ICP) Incident Command Post	--- Fire Break Planned or Incomplete	
(L) Lookout	--- Highlighted Manmade Feature	
(MWU) Mobile Weather Unit	○ Other	
(S) Staging Area	— Completed Line	
(W) Water Source	— Uncontrolled Fire Edge	