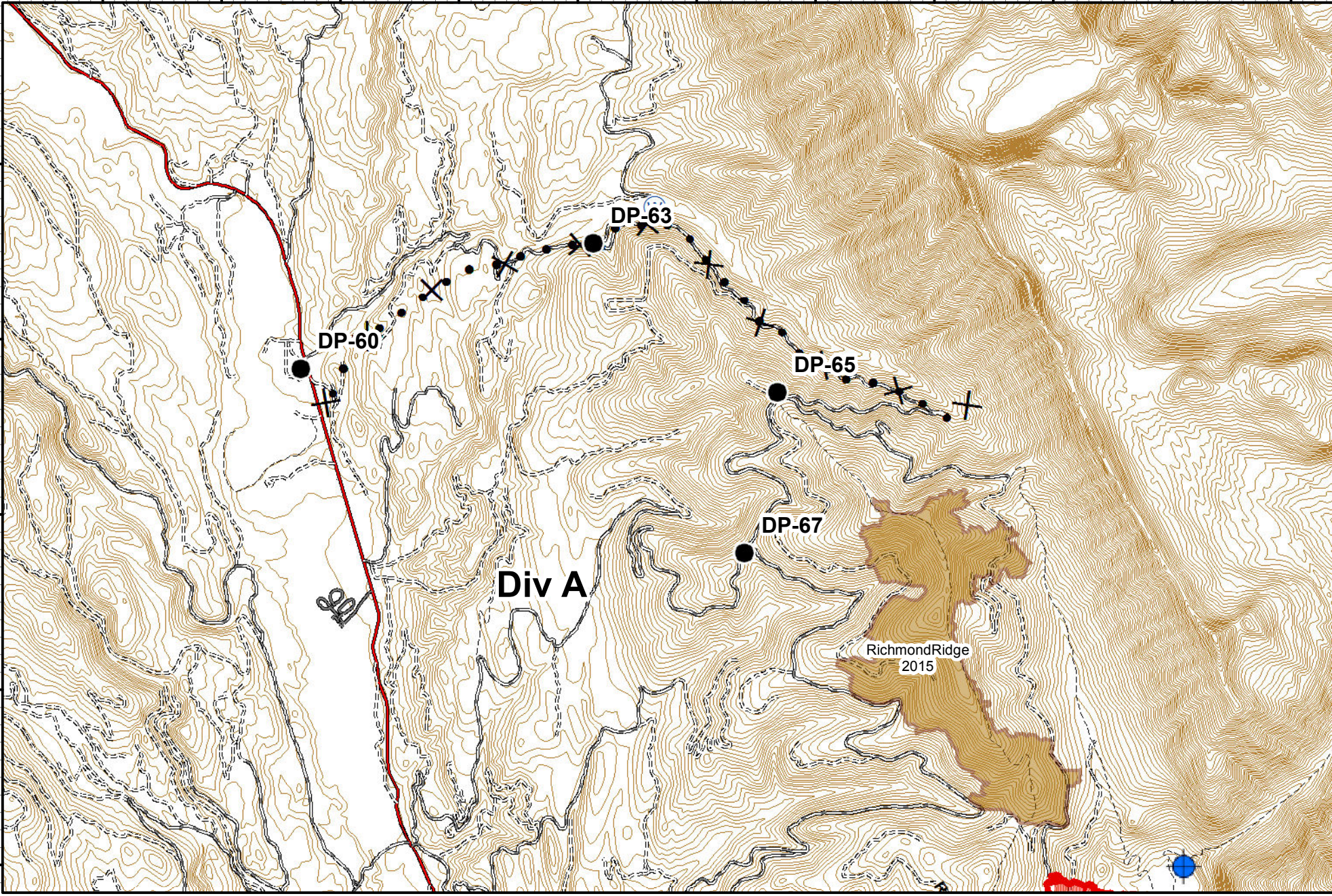


113°37'0"W 113°36'0"W 113°35'0"W 113°34'0"W 113°33'0"W 113°32'0"W 113°31'0"W 113°30'0"W 113°29'0"W 113°28'0"W 113°27'0"W

47°22'0"N
47°21'0"N
47°20'0"N
47°19'0"N
47°18'0"N

47°22'0"N
47°21'0"N
47°20'0"N
47°19'0"N
47°18'0"N



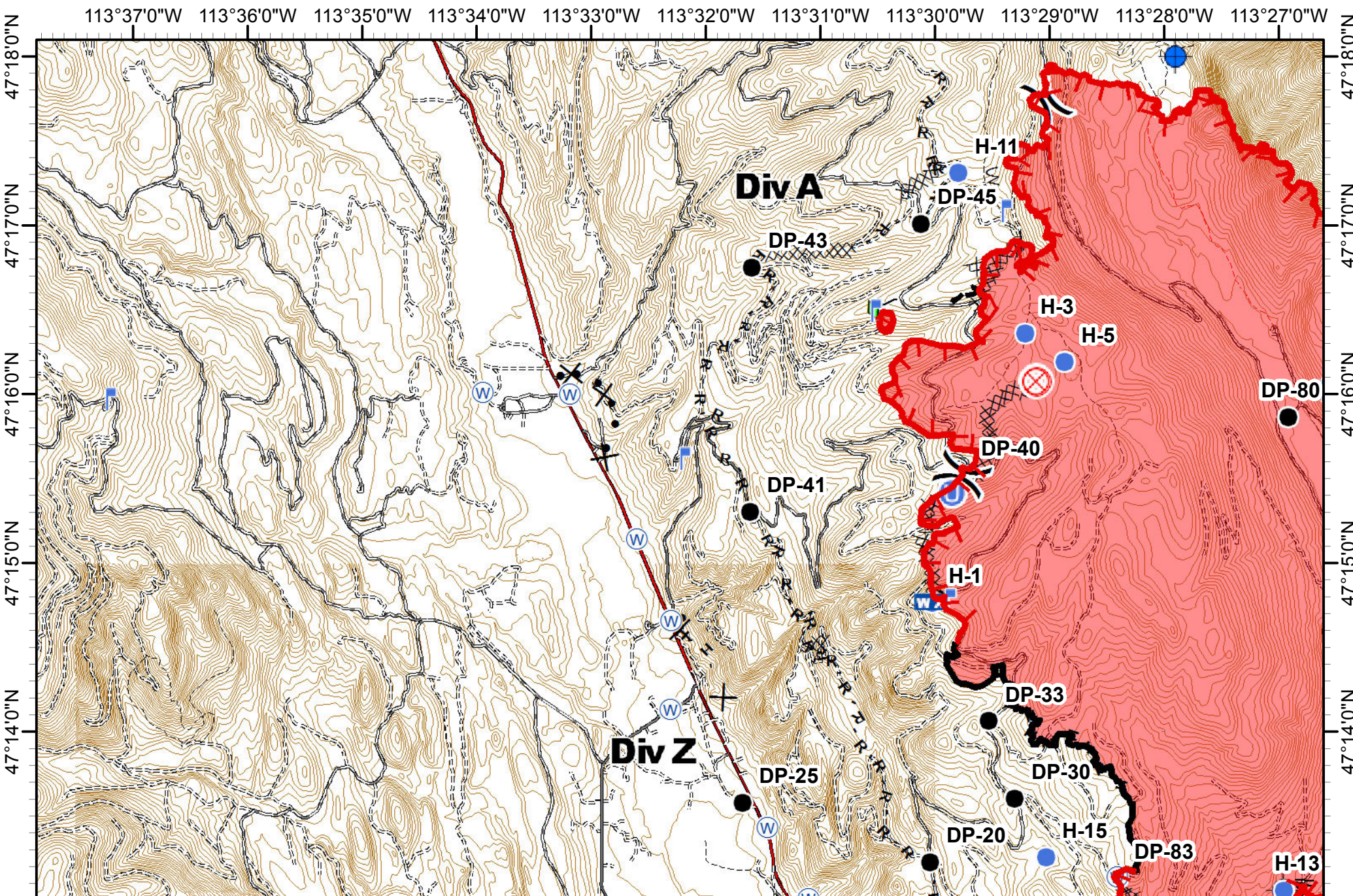
Rice Ridge Fire Incident Action Plan



MT-LNF-001464
09/01/2017
Approx Acres 33,365
MAP 1
0 0.5 1 Miles



Dip Site	Division Break	Proposed Dozer Line
Drop Point	Road as Completed Line	Uncontro... Fire Edge
Water Source		Wildfire Daily Fire Perimeter



Rice Ridge Fire Incident Action Plan

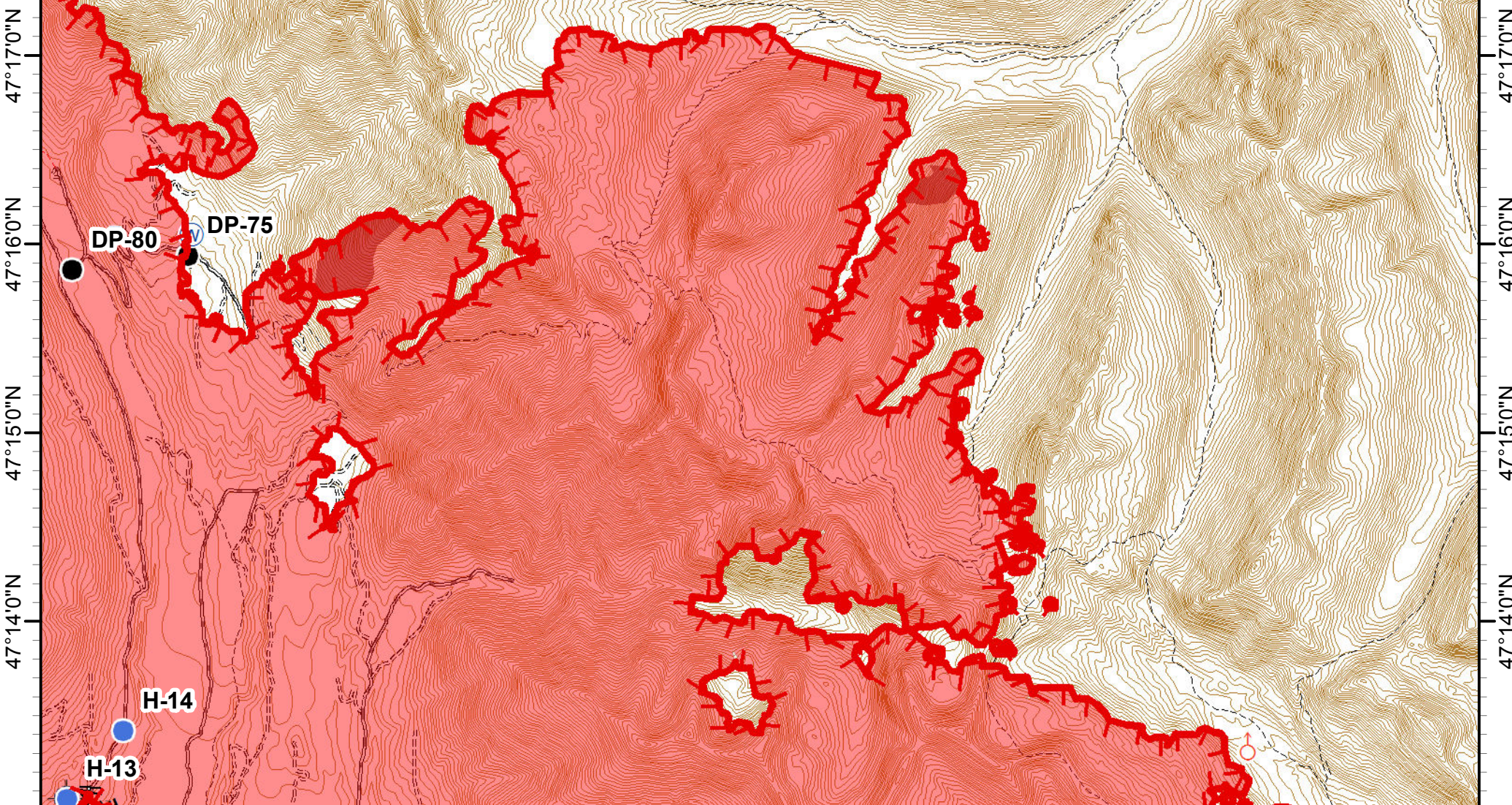
MT-LNF-001464 MAP 2
 09/01/2017
 Approx Acres 33,365

0 0.5 1 Miles

Dip Site	Fire Origin	Helispot	Mobile Weather Unit	Completed Dozer Line	Line Break Completed	Fire Break Planned or Incomplete	Uncontro... Fire Edge
Drop Point	Unimproved Landing Area	Lookout	Division Break	Completed Hand Line	Completed Plow Line	Planned Fire Line	Wildfire Daily Fire Perimeter
Water Source				Road as Completed Line	Proposed Dozer Line	Completed Line	

113°27'0"W 113°26'0"W 113°25'0"W 113°24'0"W 113°23'0"W 113°22'0"W 113°21'0"W 113°20'0"W 113°19'0"W 113°18'0"W 113°17'0"W 113°16'0"W

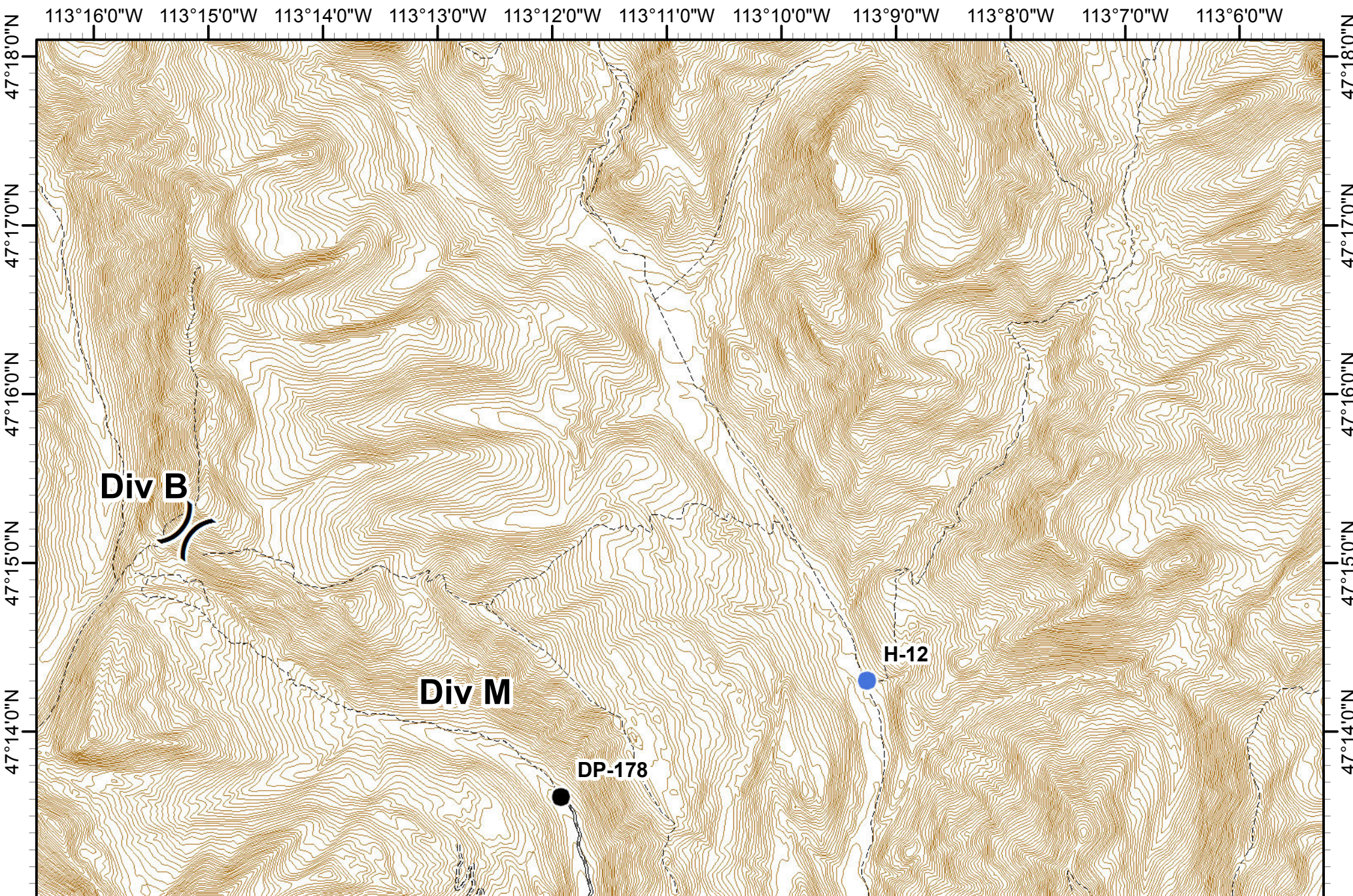
Div B



Rice Ridge Fire Incident Action Plan

MT-LNF-001464
09/01/2017
Approx Acres 33,365
MAP 3
0 0.5 1 Miles

	Dip Site		Lookout		Line Break Completed
	Drop Point		Spot Fire		Uncontro... Fire Edge
	Helispot		Water Source		IR_Intens...
	Completed Hand Line		Wildfire Daily Fire Perimeter		



Rice Ridge Fire Incident Action Plan



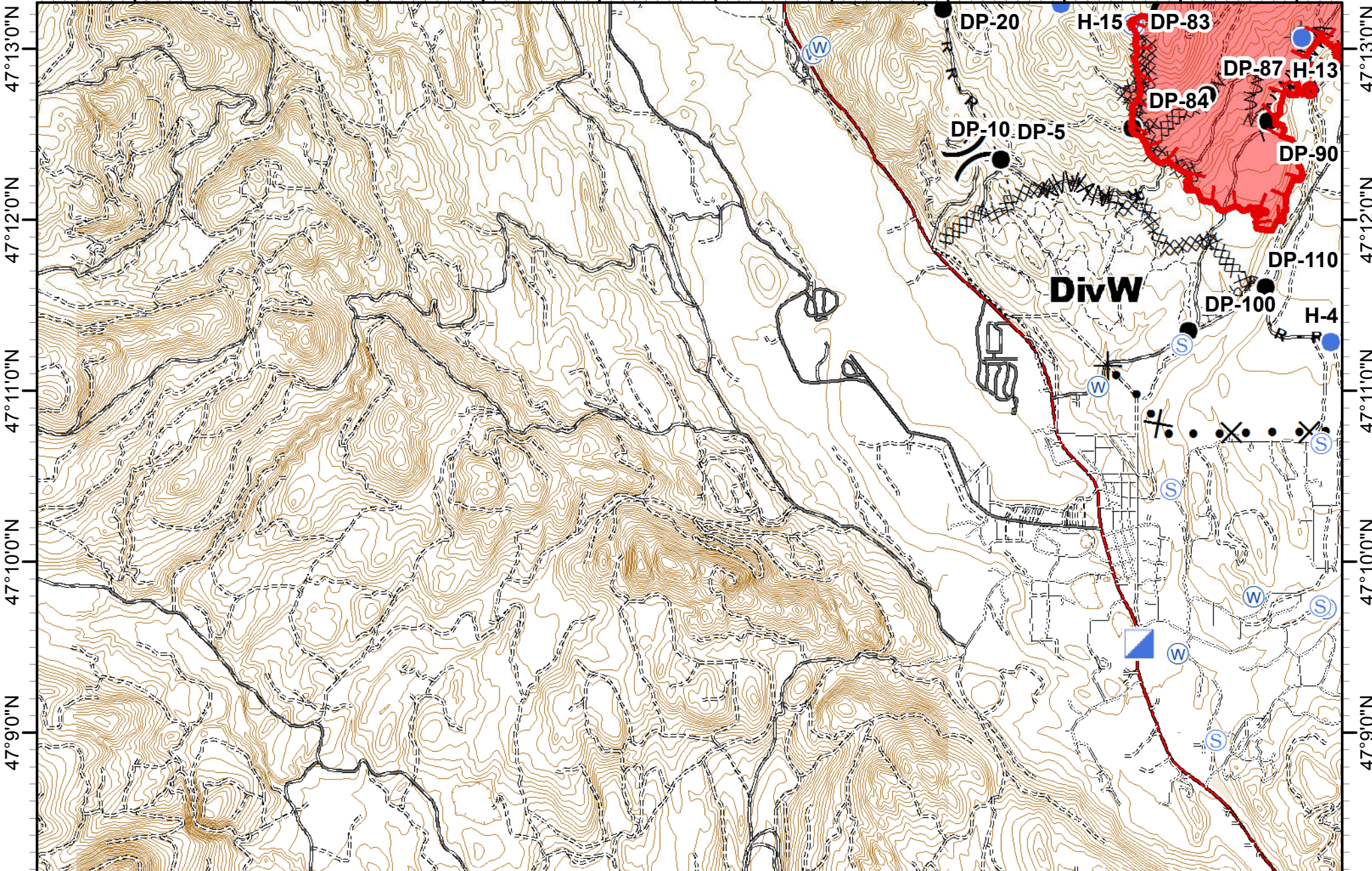
MT-LNF-001464
09/01/2017
Approx Acres 33,365

MAP 4

	Drop Point		Division Break
	Helispot		



113°37'0"W 113°36'0"W 113°35'0"W 113°34'0"W 113°33'0"W 113°32'0"W 113°31'0"W 113°30'0"W 113°29'0"W 113°28'0"W 113°27'0"W



Rice Ridge Fire Incident Action Plan

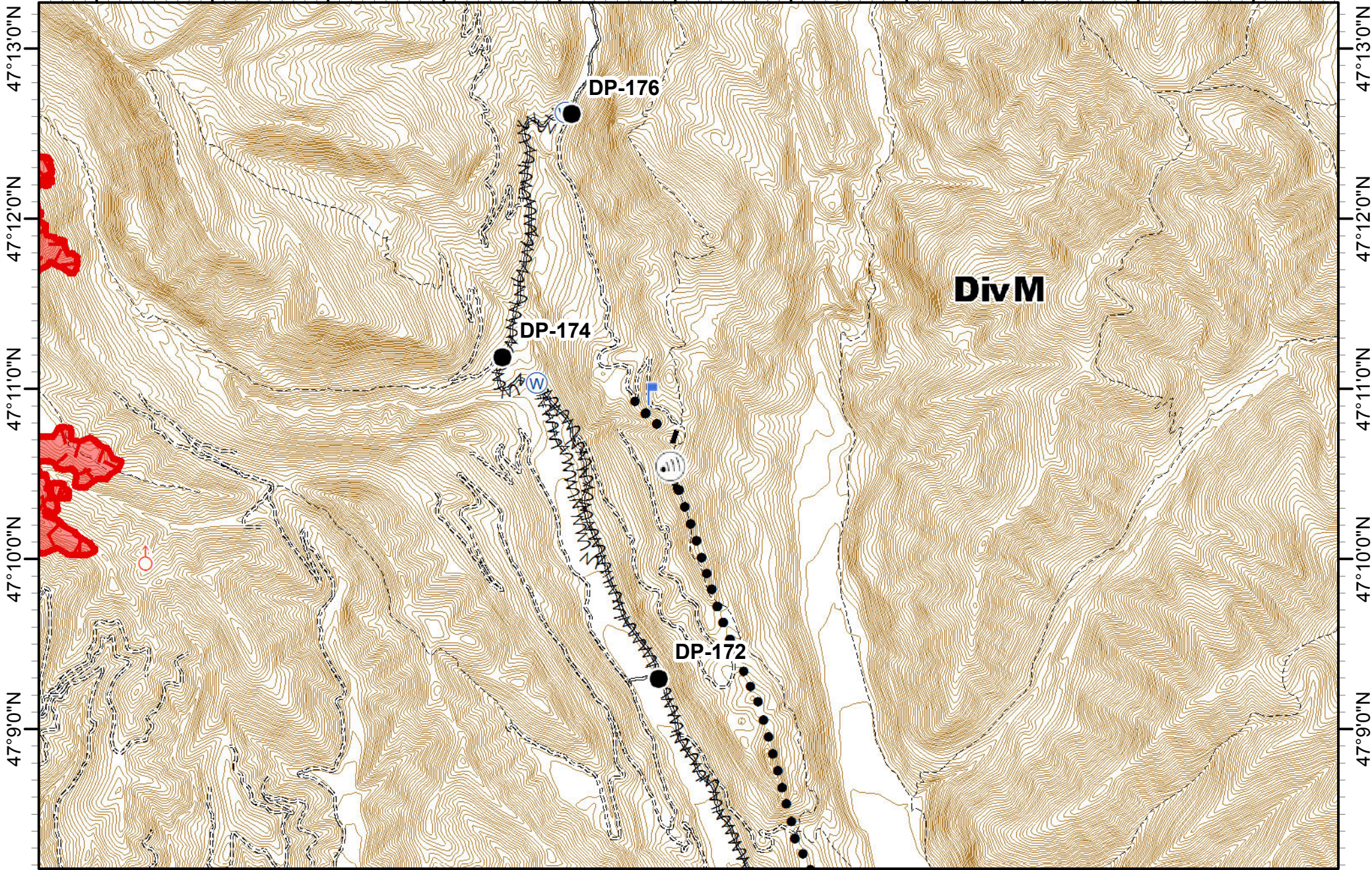
MT-LNF-001464 MAP 5
 09/01/2017
 Approx Acres 33,365

0 0.5 1 Miles



Dip Site	Incident Command Post	Water Source	Completed Dozer Line	Line Break Completed	Completed Line
Drop Point	Spot Fire	Division Break	Completed Hand Line	Proposed Dozer Line	Uncontro... Fire Edge
Helispot	Staging Area		Road as Completed Line	Fire Break Planned or Incomplete	Wildfire Daily Fire Perimeter

113°16'0"W 113°15'0"W 113°14'0"W 113°13'0"W 113°12'0"W 113°11'0"W 113°10'0"W 113°9'0"W 113°8'0"W 113°7'0"W 113°6'0"W



**Rice Ridge Fire
Incident Action Plan**



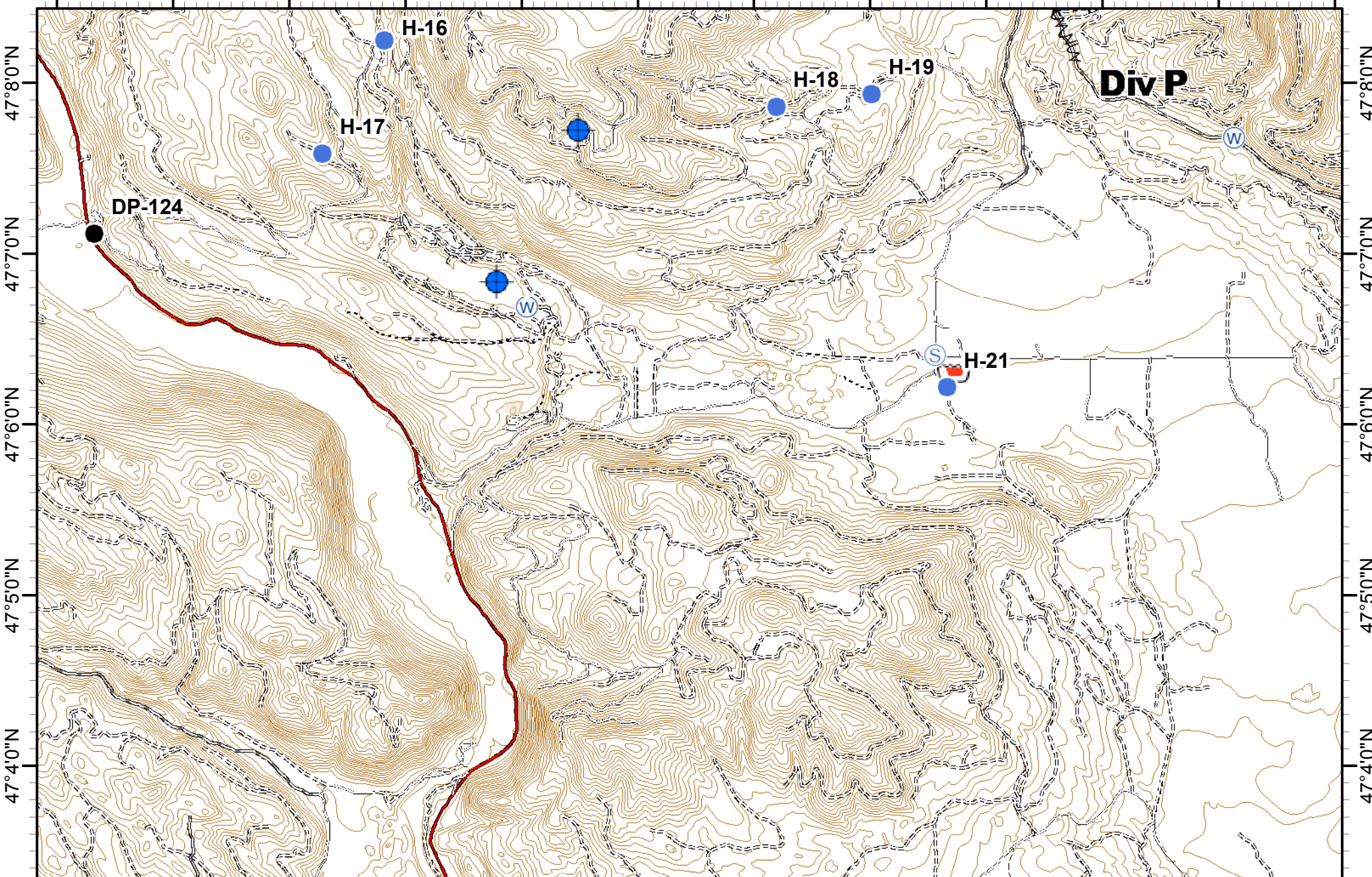
MT-LNF-001464 **MAP 7**
09/01/2017
Approx Acres 33,365

0 0.5 1 Miles



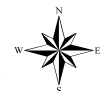
Drop Point	Lookout	Fire Break Planned or Incomplete	Uncontro... Fire Edge
Internet Access	Spot Fire	Planned Fire Line	Wildfire Daily Fire Perimeter
Water Source	Planned Secondary Line		

113°27'0"W 113°26'0"W 113°25'0"W 113°24'0"W 113°23'0"W 113°22'0"W 113°21'0"W 113°20'0"W 113°19'0"W 113°18'0"W 113°17'0"W 113°16'0"W



Div P

Rice Ridge Fire Incident Action Plan



MT-LNF-001464 **MAP 8**
09/01/2017
Approx Acres 33,365

Miles



	Retardant/... Pit		Helispot		Fire Break Planned or Incomplete
	Dip Site		Staging Area		
	Drop Point		Water Source		
		R -	Road as Completed Line		

113°16'0"W 113°15'0"W 113°14'0"W 113°13'0"W 113°12'0"W 113°11'0"W 113°10'0"W 113°9'0"W 113°8'0"W 113°7'0"W 113°6'0"W

47°8'0"N

47°7'0"N

47°6'0"N

47°5'0"N

47°4'0"N

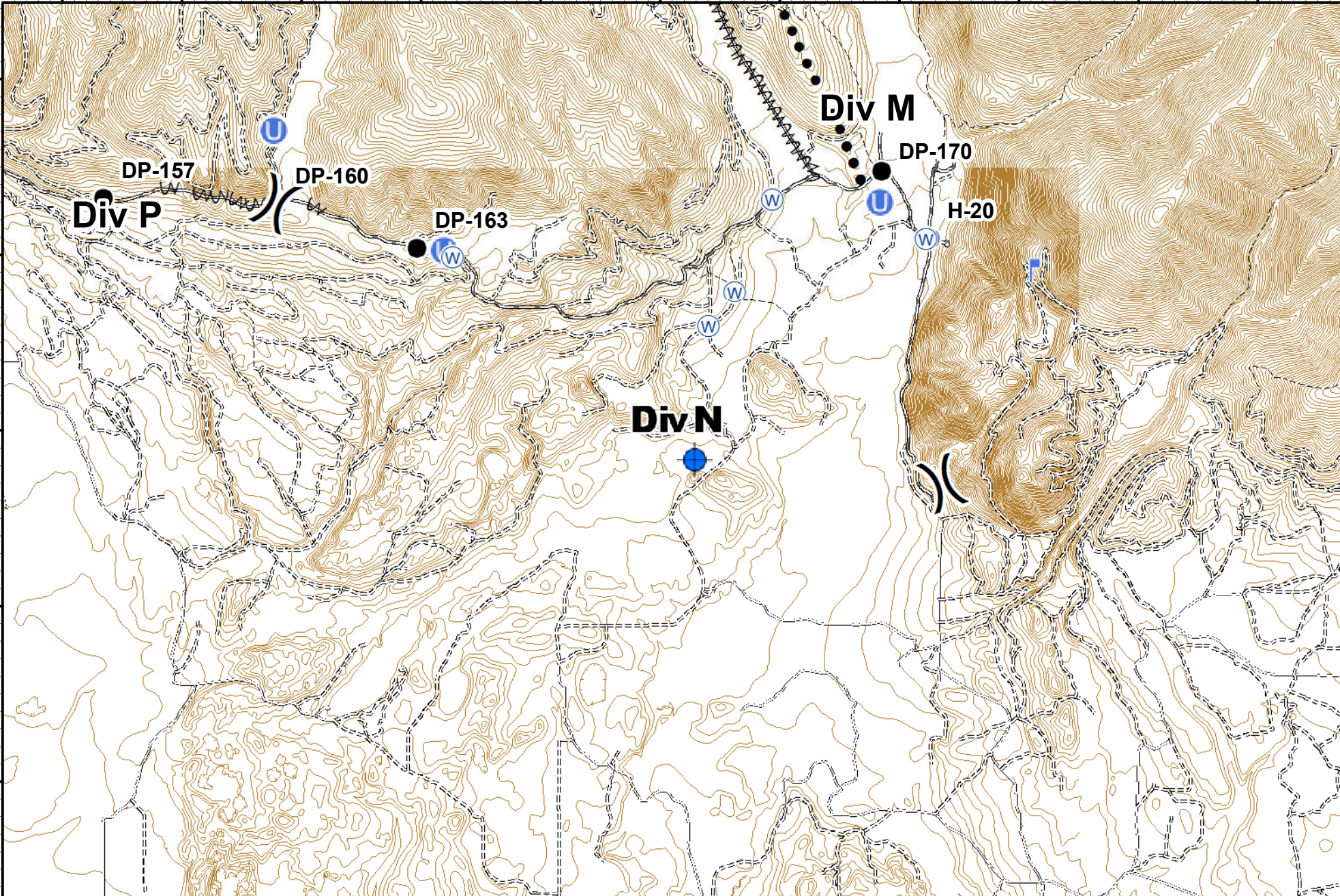
47°8'0"N

47°7'0"N

47°6'0"N

47°5'0"N

47°4'0"N



Rice Ridge Fire
Incident Action Plan



MT-LNF-001464 **MAP 9**
 09/01/2017
 Approx Acres 33,365

0 0.5 1 Miles



Dip Site	Helispot	Division Break	Planned Secondary Line
Drop Point	Lookout	Fire Break Planned or Incomplete	
Unimproved Landing Area	Water Source		